



Multi-Jurisdictional Comprehensive Plan Advisory Committee
Kenosha County Center, Public Hearing Room
February 21, 2017

Notice is hereby given that a meeting will be held by the Multi-Jurisdictional Comprehensive Plan Advisory Committee on **Tuesday, February 21, 2017 at 2:00p.m.** at the Kenosha County Center Public Hearing Room, 19600 75th Street, Bristol, Wisconsin on the following requests:

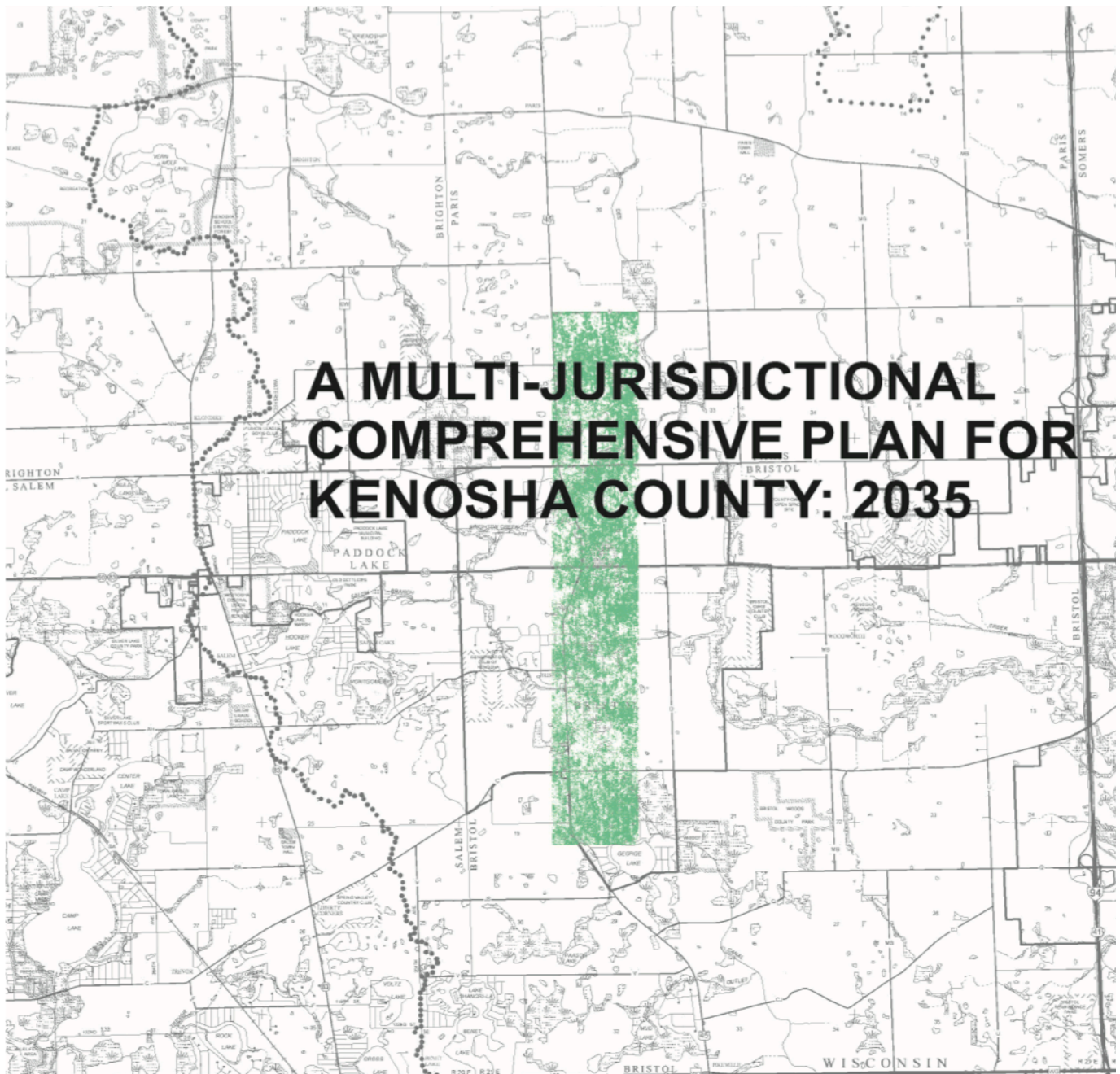
1. Call To Order
2. Committee Members And Staff Introductions
3. Approval Of Minutes Of The February 23, 2016 Meeting
4. Review And Possible Action On DRAFT Annual Report, "A Multi-Jurisdictional Comprehensive Plan For Kenosha County: 2035, 2016 Annual Report"

Documents:

[DRAFT 2016 CP ANNUAL REPORT.PDF](#)

5. Review/Discuss Existing Procedures For Land Use Plan Amendments To The Comprehensive Plan
6. Discussion Of 10-Year Update
7. Any Other Business Allowed By Law
8. Adjournment

Individual County Board Supervisors, City of Kenosha Council members, Town Board members and Village Trustees may attend the above meeting. It is possible that such attendance may constitute a meeting of the County Board, City Council, Town Board or Village Board or any of its committees pursuant to State ex rel. Badke v. Greendale Village Board, 173 Wis. 2d 553, 494 n.w.2d 409 (1993). This notice does not authorize attendance of either the above committee or the Badke meeting, but is given solely to comply with the notice requirements of the open meeting law.



2016

ANNUAL REPORT



PREPARED BY:

Ben Fiebelkorn, Senior Land Use Planner

Kenosha County Department of
Planning & Development

<p>Kenosha County Officials</p> <p>County Executive</p> <p>Jim Kreuser</p> <p>County Board of Supervisors</p> <p>Kimberly Breunig – Chairman Daniel C. Esposito – Vice Chairman William Grady Terry Rose Jeffrey Gentz Michael Goebel Rick K. Dodge Edward Kubicki Dayvin Hallmon Steve Bostrom John J. O'Day Andy Berg Ronald J. Frederick Leah V. Blough John Franco Boyd Frederick Greg Retzlaff Jeff Wambolt Jill Gillmore Michael J. Skalitzky John Poole Erin Decker Dennis Elverman</p>	<p>Multi-Jurisdictional Comprehensive Planning Advisory Committee</p> <p>Voting Members</p> <p>Erin Decker..... Planning, Development & Extension Education Committee Chairperson</p> <p>John Holloway..... Town of Paris Vice-Chairperson</p> <p>Jeff Labahn..... City of Kenosha Mike Farrell.....Village of Bristol JeanWerbie-Harris..... Village of Pleasant Prairie Joanne Maggio Village of Silver Lake George Stoner.....Village of Somers John Kiel..... Town of Brighton Dennis Faber... Town of Salem Mark Molinaro..... Town of Somers William Glembocki, Jr... Town of Wheatland</p> <p>Non-Voting Members</p> <p>Todd Battle.....Kenosha Area Business Alliance (KABA) Ron Iwen..... Kenosha Area Transit Mark Edquist.....Farming Community Representative Pat Finnemore.....Kenosha Unified School District Colleen Fisch..... Kenosha-Racine Land Trust Tim Popanda.....Village of Paddock Lake Sandie Hansen..... Citizen Representative Robert Stoll..... Town of Randall Dr. Scott Pierce..... Westosha Central High School District Lena Schlater..... Realty Industry Representative Clement Obongwa..... Kenosha County Department of Public Works NancyWashburn Building Industry Representative Lon Wienke..... Village of Twin Lakes</p> <p>Alternate Advisory Committee Voting Members: Rich Schroeder, City of Kenosha; Randy Kerkman, Village of Bristol; Peggy Herrick, Village of Pleasant Prairie; Sue Gerber, Village of Silver Lake; Bill Morris, Village of Somers; Andy Wright, Town of Brighton; Virgil Gentz, Town of Paris; Brad Zautcke, Town of Salem; Bill Morris, Town of Somers; Sheila Siegler, Town of Wheatland.</p>
<p>Planning, Development & Extension Education Committee Members</p> <p>Erin Decker - Chairperson John Poole - Vice-Chairperson Michael J. Skalitzky Jill Gillmore Steve Bostrom</p>	<p>Staff Support</p> <p>Kenosha County</p> <p>Andy Buehler..... Director, Division of Planning Operations Ben Fiebelkorn..... Senior Land Use Planner Dan Treloar..... County Conservationist</p>

Contents

INTRODUCTION	1
USE OF THE PLAN TO GUIDE COUNTY ACTIVITIES	1
 LAND USE PLAN MAP AMENDMENTS: 2015	
CITY OF KENOSHA	1
VILLAGE OF BRISTOL	2
VILLAGE OF PLEASANT PRAIRIE.....	2
VILLAGE OF PADDOCK LAKE.....	3
VILLAGE OF SOMERS.....	4
TOWN OF SALEM.....	4
TOWN OF WHEATLAND.....	4
KENOSHA COUNTY (unincorporated areas).....	4
KENOSHA COUNTY PLANNED LAND USE MAP	6
 RECOMMENDED PROGRAMS & PRIORITIES	
ARICULTURAL, NATURAL, & CULTURAL RESOURCES ELEMENT (CHAPTER VIII)	7
LAND USE ELEMENT (CHAPTER IX).....	9
HOUSING ELEMENT (CHAPTER X).....	10
TRANSPORTATION ELEMENT (CHAPTER XI).....	10
UTILITIES AND COMMUNITY FACILITIES ELEMENT (CHAPTER XII)	11
ECONOMIC DEVELOPMENT ELEMENT (CHAPTER XIII).....	12
INTERGOVERNMENTAL COOPERATION ELEMENT (CHAPTER XIV)	13
ZONING ORDINANCES	14
 UPDATED INVENTORY DATA	15
 PROPOSED PLAN AMENDMENTS	
MULTI-JURISDICTIONAL COMPREHENSIVE PLAN TEXT AMENDMENTS	15
 SUMMARY	
SUMMARY OF RECOMMENDED PROGRAMS AND PRIORITIES	15
SUMMARY OF UPDATED INVENTORY DATA	15

INTRODUCTION

Per Part 8 of Chapter XV – Implementation Element of the multi-jurisdictional comprehensive plan (*A Multi-Jurisdictional Comprehensive Plan for Kenosha County: 2035*), the Kenosha County Planning and Development Department has prepared this draft annual report on plan implementation for review by local governments and County officials. This draft annual report includes a list of map amendments made to the plan during the year; major changes to County or local ordinances made to implement the plan (such as the adoption of new zoning districts); a list of new or updated plans related to the multi-jurisdictional comprehensive plan (such as farmland protection or park and open space plans); a list of updated inventory information available from the County or Southeastern Wisconsin Regional Planning Commission (SEWRPC); proposed plan text amendments; and other information identified by local or County officials.

The following is an inventory of work products and other activities related to the *multi-jurisdictional comprehensive plan* conducted by Kenosha County Department of Planning & Development during the period of January 1, 2016 – December 31, 2016.

Use of the Plan to Guide County Activities

The multi-jurisdictional comprehensive plan (*A Multi-Jurisdictional Comprehensive Plan for Kenosha County: 2035*) served as a guide in the creation and implementation of several County activities. Below is a summary of select key programs implemented from the multi-jurisdictional comprehensive plan.

LAND USE PLAN MAP AMENDMENTS: 2016

The following is a list of land use plan map amendments that have been made to the multi-jurisdictional comprehensive plan during the period of January 1, 2016 – December 31, 2016.

Δ Notes that an amendment to the Adopted Land Use Plan Map for Kenosha County: 2035 (Map 65) was required. Comparisons of plan categories between the local plan maps and the County map are shown in Appendix S of the multi-jurisdictional comprehensive plan.

City of Kenosha

Ordinance No. 04-16 Δ

An ordinance amending Section 18 of the Zoning Ordinance of the City of Kenosha which amends the 2035 Land Use Plan for the City of Kenosha (Map 9-6). This Amendment makes changes to the existing St. Peter's Neighborhood Plan. Adopted by the City of Kenosha on January 20, 2016.

Ordinance No. 05-16

An ordinance amending Section 18 of the City of Kenosha Zoning Ordinance which amends the 2035 Land Use Plan for the City of Kenosha. The Amendment adopts the ULI Advisory Services Panel Report for the *Former Chrysler Engine Plant Site Redevelopment, Kenosha, Wisconsin*. Adopted by the City of

Kenosha on January 20, 2016.

Ordinance No. 15-16 Δ

An ordinance amending Section 18 of the City of Kenosha Zoning Ordinance which amends the 2035 Land Use Plan for the City of Kenosha. The Amendment changes the land use designation from “Isolated Natural Resource Area” to “Government and Institutional” for the property depicted on the enclosed map. Adopted by the City of Kenosha on April 4, 2016.

Ordinance No. 26-16 Δ

An ordinance amending Section 18 of the City of Kenosha Zoning Ordinance which amends the 2035 Land Use Plan for the City of Kenosha (Map 9-6). The Amendment changes the land use designation from “Isolated Natural Resource Area” to “Government and Institutional” for the property depicted on the enclosed map. Adopted by the City of Kenosha on July 18, 2016.

- From “Commercial” to “Wetlands”,
- From “Commercial” to “Industrial”,
- From “Commercial” to “Government and Institutional”
- From “Commercial” to “Existing Public Street Rights-of-Way”,
- From “Future Public Streets Rights-of-Way” to “Government and Institutional”, and
- From “Future Public Streets Rights-of-Way” to “Existing Public Streets Rights-of-Way”

for the properties or portions of the properties depicted on the enclosed map.

Ordinance No. 33-16 Δ

An ordinance amending Section 18 of the City of Kenosha Zoning Ordinance which amends the 2035 Land Use Plan for the City of Kenosha (Map 9-6). The Amendment changes the land use designation from “Industrial” to “Government and Institutional” for the properties or portions of the properties depicted on the enclosed map. Adopted by the City of Kenosha on November 7, 2016.

Village of Bristol

Ordinance No. 2015-9 Δ

An ordinance amending the comprehensive plan for the Village of Bristol from R-9 & B-1 to R-5 on tax parcel numbers 37-4-121-082-0600, 37-4-121-082-0320, 37-4-121-082-0325 and 37-4-121-0082-0300 in the Village of Bristol. Adopted by the Village of Bristol on January 11, 2016.

Ordinance No. 2016-10 Δ

An ordinance amending the comprehensive plan for the Village of Bristol from HC to PR-1 on tax parcel number 37-4-121-124-0205 in the Village of Bristol. Adopted by the Village of Bristol on March 28, 2016.

Village of Pleasant Prairie

Ordinance No. 16-01 Δ

An ordinance to amend the 2035 Land Use Plan to change the Park, Recreation and Other Open Space Lands with an Interpolated Wetlands land use designations to the Low-Medium Density Residential land use designation on the two vacant properties within Carol Beach Estates Unit #6 Subdivision (Lot 17 of

Block 5 identified as Tax Parcel Number 93-4-123-184-1210 and Lot 13 of Block 5 identified as Tax Parcel Number 93-4-123-184-1190) as a result of no wetlands found on the property. Adopted by the Village of Pleasant Prairie on February 15, 2016.

Ordinance No. 16-15

An ordinance to amend the Green Hills Farms Neighborhood Plan 8 of Appendix 9-3. Prior to the Village Boards' consideration, the Plan Commission held a public hearing and adopted Plan Commission Resolution #16-07 in support of this amendment. Adopted by the Village of Pleasant Prairie on June 6, 2016.

Ordinance No. 16-22 Δ

An ordinance to amend the Village 2035 Land Use Plan Map to change the Park, Recreational and Other Open Space lands with an Interpolated Wetlands land use designations to the Low-Medium Density Residential land use designation on the vacant property within Carol Beach Estates Unit #6 Subdivision (Lot 3 of CSM 1877 and identified as Tax Parcel Number 93-4-123-191-0137) as a result of no wetlands found on the property. Adopted by the Village of Pleasant Prairie on June 20, 2016.

Ordinance No. 16-24 Δ

An ordinance to amend the Prairie Ridge Neighborhood Plan 21 of Appendix 9-3; to amend the Village 2035 Land Use Plan Map to remove the urban reserve designation from the properties (Tax Parcel Numbers 91-4-122-084-0203 and 91-4-122-084-0342) and to change the area field identified as wetlands into the Park, Recreational and Other Open Space Lands with an Interpolated Wetlands land use designations from the Upper Medium Residential land use designation; and to update Appendix 10-3 of the Village of Pleasant Prairie Wisconsin, 2035 Comprehensive Plan to include said amendment. Prior to the Village Board's consideration, the Plan Commission held a public hearing and adopted the Plan Commission Resolution #16-09 in support of the amendment. Adopted by the Village of Pleasant Prairie on June 20, 2016.

Ordinance No. 16-33 Δ

An ordinance to amend the Village 2035 Land Use Plan to change the Low Density Residential with an Urban Reserve land use designations to the Park, Recreational and Other Open Space Lands with a Field Verified Wetlands land use designations on the portion of the property located at the 11700 block of Old Green Bay Road (Lot 3 of CSM 1761 and identified as Tax Parcel Number 92-4-122-342-0143 identified as wetlands. Adopted by the Village of Pleasant Prairie on November 7, 2016.

Ordinance No. 16-43

An ordinance to amend the Prairie Ridge Neighborhood Plan 21 of Appendix 9-3. Prior to the Village Board's consideration, the Plan Commission held a public hearing and adopted Plan Commission Resolution #16-12 in support of the amendment. Adopted by the Village of Pleasant Prairie on December 5, 2016.

Village of Paddock Lake

None.

Village of Somers

Ordinance No. 2016-2 Δ

An ordinance to amend the land use plan map for the Village of Somers (Map 80) as adopted in the Multi-Jurisdictional Comprehensive Plan for Kenosha County 2035 to change the land use category from Farmland Protection and SEC to Farmland Protection, General Agricultural and Open Land, Rural Residential and SEC on tax parcel 82-4-222-071-0200 in the Village of Somers. Adopted by the Village of Somers on **January 2, 2016**.

Town of Salem

Ordinance No. 2016-17 Δ

An ordinance to amend the multi-jurisdictional comprehensive plan (A Multi-Jurisdictional Comprehensive Plan for Kenosha County 2035) to change the land use category from Suburban-Density Residential to Suburban-Density Residential and Medium-Density Residential on tax parcel 65-4-120-153-0720 in the Town of Salem. Adopted by Kenosha County on September 22, 2016.

Ordinance No. 2016-23 Δ

An ordinance to amend the multi-jurisdictional comprehensive plan (A Multi-Jurisdictional Comprehensive Plan for Kenosha County 2035) to change the land use category from Governmental and Institutional to Commercial on tax parcel 67-4-120-302-0241 in the Town of Salem. Adopted by Kenosha County on January 21, 2016.

Town of Wheatland

Ordinance No. 2016-13 Δ

An ordinance to amend the multi-jurisdictional comprehensive plan (A Multi-Jurisdictional Comprehensive Plan for Kenosha County 2035) to change the land use category from Suburban-Density Residential and Non-Farmed Wetland to Commercial and Non-Farmed Wetland on tax parcel 95-4-219-314-0640 in the Town of Wheatland. Adopted by Kenosha County on August 17 2016.

Kenosha County

Ordinance No. 2016-6 Δ

An ordinance to amend the multi-jurisdictional comprehensive plan (A Multi-Jurisdictional Comprehensive Plan for Kenosha County 2035) to change the land use category from Farmland Protection and SEC to Farmland Protection, Industrial & SEC on tax parcel 45-4-221-232-0301 in the Town of Paris. Adopted by Kenosha County on May 18, 2016.

Ordinance No. 2016-7 Δ

An ordinance to amend the multi-jurisdictional comprehensive plan (A Multi-Jurisdictional Comprehensive Plan for Kenosha County 2035) to change the land use category from Farmland Protection to General Agricultural & Open Land on tax parcel 30-4-220-251-0200 in the Town of Brighton. Adopted by Kenosha County on May 18, 2016.

Ordinance No. 2016-11 Δ

An ordinance to amend the multi-jurisdictional comprehensive plan (A Multi-Jurisdictional Comprehensive Plan for Kenosha County 2035) to change the land use category from Farmland Protection, General Agricultural & Open Land, INRA and Non-Farmed Wetland to Farmland Protection, Suburban-Density Residential and Non-Farmed Wetland on part of tax parcel 45-4-221-141-0300 in the Town of Paris. Adopted by Kenosha County on August 17, 2016.

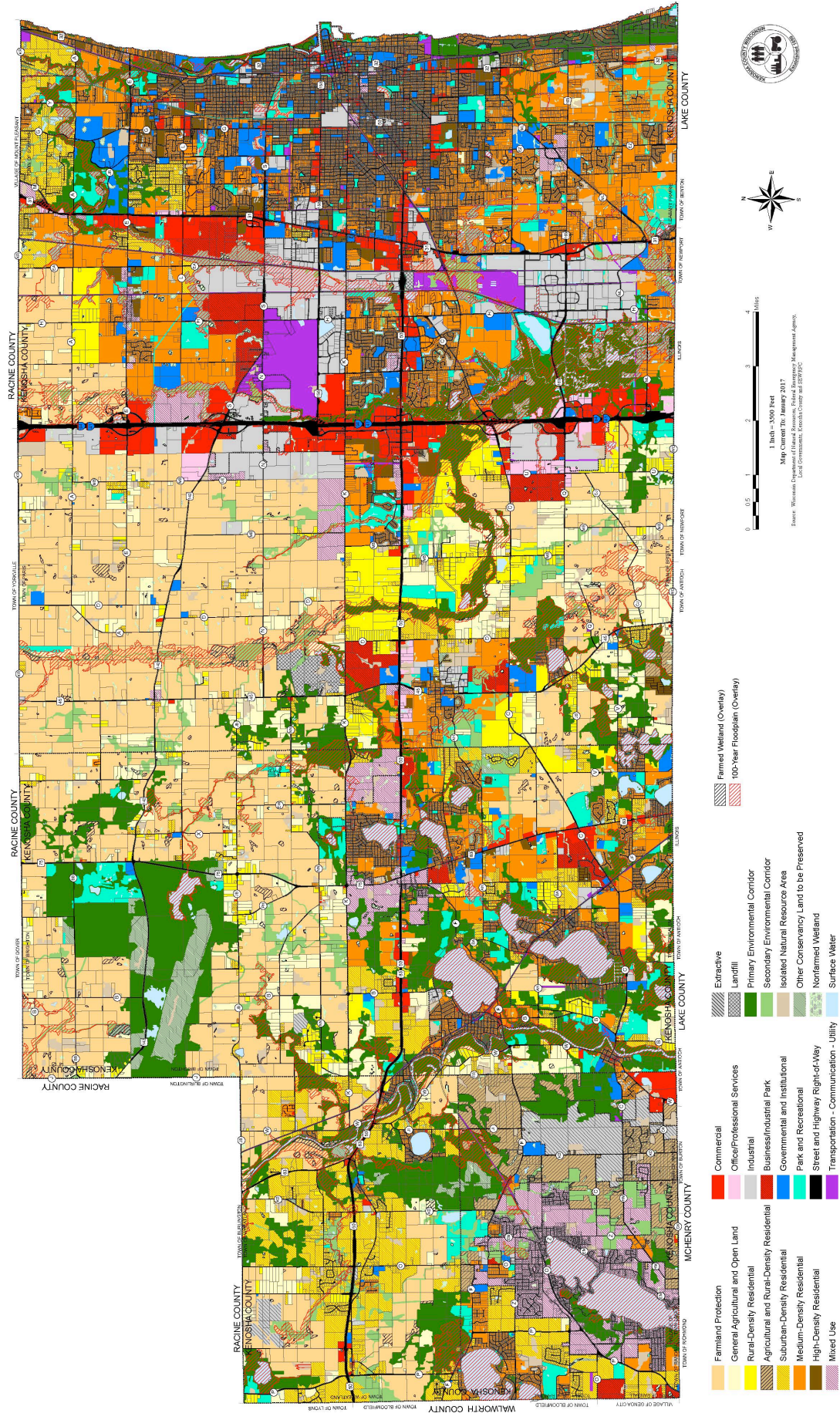
Ordinance No. 2016-16 Δ

An ordinance to amend the multi-jurisdictional comprehensive plan (A Multi-Jurisdictional Comprehensive Plan for Kenosha County 2035) to change the land use category from Farmland Protection, Governmental and Institutional and SEC to General Agricultural & open Land and SEC on tax parcel 45-4-221-274-0300 in the Town of Paris. Adopted by Kenosha County on September 22, 2016.

Ordinance No. 2016-24 Δ

An ordinance to amend the multi-jurisdictional comprehensive plan (A Multi-Jurisdictional Comprehensive Plan for Kenosha County 2035) to change the land use category from Business/Industrial Park and SEC to Business/Industrial Park, Suburban-Density Residential and SEC on tax parcel 60-4-119-164-0200 in the Town of Randall. Adopted by Kenosha County on October 20, 2016.

MAP 65
ADOPTED LAND USE PLAN MAP FOR KENOSHA COUNTY: 2035



RECOMMENDED PROGRAMS & PRIORITIES

Part 7 of Chapter XV – Implementation Element, included a compilation of programs from each of the plan elements to implement the recommendations set forth in the plan. These programs were to be considered as having the highest priority in implementing the plan and were not listed in priority order.

The following are those recommended high-priority programs as included in the Implementation Element and how they have been addressed by Kenosha County staff during the period of January 1, 2016 – December 31, 2016. The recommended programs have been categorized as completed, continuous, in-progress, not addressed, or discontinued (see table below).

Completed ✓	Continuous ∞	In-Progress ~	Not Addressed ≠	Discontinued Ø
Programs that have been addressed and completed	Programs that are on-going throughout the plan year 2035	Programs that have been addressed but are not yet complete	Programs that have not yet been addressed	Programs that have been discontinued

Note: The following information on recommended programs is up to date and accurate to the best of County staff's knowledge at the time of publication.

Agricultural, Natural, & Cultural Resources Element (Chapter VIII)

- **∞Program:** Continue to support the Kenosha County Planning and Development Department in its efforts to protect land and water resources, including farmland, and to implement recommendations set forth in the County Land and Water Resource Management Plan.
- **≠Program:** Study the concept of a transfer of development rights (TDR) program and/or a purchase of development rights (PDR) program for local and county government use that focuses on the protection of agricultural areas.
- **ØProgram:** Update the *Kenosha County Farmland Preservation Plan* to reflect changes to the Wisconsin Farmland Preservation Program approved by the State Legislature in response to the Working Lands Initiative report. Encourage local governments to participate in developing and implementing the updated County Farmland Preservation Plan.
- **ØProgram:** Designate Agricultural Enterprise Areas (AEA) containing contiguous lands devoted primarily to agricultural use as recommended in the updated County Farmland Preservation Plan. An AEA may be part of a broader strategy to protect farmland and promote agriculture and agriculturally-related development.
- **ØProgram:** Encourage the implementation of the Purchase of Agricultural Conservation Easements (PACE) program, which provides State funding for the purchase of such easements from willing landowners in order to preserve agricultural capacity and conserve unique agricultural resources.
- **ØProgram:** Update the Kenosha County zoning ordinance to meet or exceed farmland preservation standards in accordance with Section 71.613 and Chapter 91 of the *Statutes*, in order to maintain a

farmer's eligibility for State income tax credits and to implement the County Farmland Preservation Plan.

- **∞Program:** Continue to encourage intergovernmental cooperation to protect farmland, including the use of boundary agreements.
- **ØProgram:** Work with KABA (Kenosha Area Business Alliance) to develop programs to promote an agricultural economic cluster of farming operations and appropriate agri-businesses on lands designated for agricultural use on the County Land Use Plan Map (Map 65 in Chapter IX).
- **∞Program:** Continue to protect lowland portions of environmental corridors and other lowland areas, including wetlands, through enforcement of C-1 district regulations set forth in the Kenosha County General Zoning and Shoreland/Floodplain Zoning Ordinance.
- **∞Program:** Continue to protect upland portions of environmental corridors and other upland areas through enforcement of C-2 district regulations set forth in the Kenosha County General Zoning and Shoreland/Floodplain Zoning Ordinance.
- **∞Program:** Continue to work with the Kenosha/Racine Land Trust and other NCOs to protect primary environmental corridors, natural areas, and critical species habitat sites through fee simple acquisitions and conservation easements.
- **∞Program:** Work to protect environmental corridors and natural areas through County and local plat review processes.
- **≠Program:** Consider amending the Rural Cluster Overlay District in the County zoning ordinance to require stewardship plans for the management of common open space in conservation subdivisions.
TALK TO DAN!!!!!!!!!!
- **∞Program:** Support and, where applicable, implement sanitary sewer and stormwater management standards recommended in the regional water quality management plan update and subsequent amendments.
- **∞Program:** Incorporate the updated floodplain mapping from the Kenosha County floodplain map modernization project into the County zoning maps following approval of the maps by the DNR and FEMA.
- **∞Program:** Continue to administer and enforce floodplain and shoreland regulations included in the Kenosha County General Zoning and Shoreland/Floodplain Zoning Ordinance.
- **∞Program:** Continue to implement County ordinance requirements related to land suitability to avoid inappropriate development on severe structural or severe wet soils.
- **∞Program:** Maintain, update, and implement recommendations set forth in the Kenosha County Hazard Mitigation.
- **∞Program:** Plan as funding becomes available, including acquisition of properties in the floodplain without "buildable" areas.
- **≠Program:** Consider amending the Kenosha County General Zoning and Shoreland/Floodplain Zoning Ordinance to address Lake Michigan bluff erosion more comprehensively, and develop bluff setback requirements for new development and redevelopment projects, with assistance from the Wisconsin Coastal Management Program and Wisconsin Sea Grant.
- **∞Program:** Continue to cooperate with Waste Management/Pheasant Run Landfill to conduct the countywide hazardous household waste collection program, and incorporate other recycling efforts and awareness into the program.
- **∞Program:** Continue to provide education and assistance to citizens on potential environmental problems that may impact human health, including home health hazards such as mold, lead, and

asbestos; indoor and outdoor air quality; solid and hazardous waste; and pest control.

- **≠Program:** Work with local governments and aggregate producers to identify suitable areas with commercially viable sources of sand and gravel. Ideally, suitable areas should be located in sparsely populated areas and not have significant surface natural resources. Exceptions may be considered for innovative mining methods that have minimal impacts on surrounding residents and land uses.
- **✓Program:** Update the County park and open space plan, including updates from the regional natural areas and critical species habitat plan, to maintain eligibility for DNR Stewardship funding.
- **∞Program:** Continue the development, enhancement, and management of recreational trail facilities to ensure connectivity of such facilities in Kenosha County including potential water trails, as illustrated in Map 61 and potential area-wide recreational bicycle trails, as illustrated in Map 63.
- **∞Program:** Preserve and maintain structures with significant historical value owned by the County.
- **∞Program:** Preserve and maintain sites owned by the County that have significant archaeological value.

Land Use Element (Chapter IX)

- **∞Program:** Kenosha County will continue to work with Towns to develop land use plans and plan amendments for inclusion in the multi-jurisdictional plan that can be implemented through County land use-related ordinances, and identify and adopt needed amendments to such ordinances.
- **∞Program:** Kenosha County will continue to administer and enforce the Kenosha County General Zoning and Shoreland/Floodplain Zoning Ordinance in unincorporated areas in accordance with State and Federal requirements and the land use plan map (Map 65).
- **≠Program:** Communities may establish urban and rural design guidelines as a Town ordinance for which compliance may be mandatory (regulatory approach by converting guidelines into ordinance regulations) or voluntary (nonregulatory approach by encouraging developers to follow a design manual). As an integral part of this comprehensive plan and in unincorporated Towns, Towns may establish Town-specific urban and rural design guidelines for residential, commercial, industrial, office, business park, village/town center, recreational, and institutional development, provided said design guidelines are first approved by Kenosha County before a design guideline ordinance is enacted by a Town.
- **∞Program:** Encourage a full range of housing structure types and sizes, including single-family, two-family, and multi-family dwelling units, in sanitary sewer service areas to provide affordable housing options for households of all income levels, ages, and special needs projected for Kenosha County in 2035.
- **∞Program:** Encourage the development of nursing homes, community-based residential facilities, and other types of assisted living facilities for the elderly and persons with disabilities in appropriate locations.
- **~Program:** The County and affected local governments should cooperatively identify study areas for integrated land use and transportation plans around IH 94 interchanges and prepare plans for these areas to refine the land use development pattern set forth on Map 65.
- **~Program:** Local governments will consider developing neighborhood plans that include a planned street network plan to provide proper guidance to developers for connectivity of collector and land access streets between subdivisions.

- **∞Program:** Encourage and support businesses and agribusiness that use “green” development techniques and focus on renewable, alternative, or sustainable energy resources.
- **~Program:** Kenosha County will work with towns to update County shoreland zoning regulations to comply with pending updates to Chapter NR 115 of the *Wisconsin Administrative Code*.
- **∞Program:** Kenosha County and SEWRPC will continue to provide all inventory and additional planning maps produced for the multi-jurisdictional comprehensive planning process to local governments, on request, to facilitate joint land use planning.

Housing Element (Chapter X)

- **≠Program:** Kenosha County should study the feasibility of creating a countywide housing trust fund to provide a dedicated source of revenue to support the development and preservation of affordable housing.
- **~Program:** Identify programs and potential funding sources for new programs to assist homeowners in creating more energy-efficient homes and in making needed repairs, including improvements to meet State and Federal lead-safe standards.
- **∞Program:** Continue cooperative efforts between the Kenosha County Health Department and local governments to enforce State public health Statutes, and County and local ordinances concerning dilapidated, unsafe, or unsanitary housing that pose a human health hazard.
- **∞Program:** Support and consider expanding the Kenosha County Housing Authority programs, including the Housing Rehabilitation Loan Program, the Homestead Opportunity Loan Program, and the Fox River Flood Mitigation Program.
- **≠Program:** Encourage local and county governments to incorporate Universal Design requirements into local zoning ordinances and building codes.
- **∞Program:** Continue to support and expand Kenosha County Division of Aging¹ services and programs, which provide support services and information to elderly and physically disabled residents, and to their families.
- **∞Program:** Continue to support nonprofit agencies and Kenosha County’s Division of Aging Services “stay-at-home” services to assist elderly and disabled residents living in traditional homes. Aside from personal and home healthcare, services include adult day care, home modification, housekeeping, meal delivery, lawn care, and snow removal.

Transportation Element (Chapter XI)

- **≠Program:** Kenosha County, in cooperation with local governments, SEWRPC, and State agencies, should prepare a Countywide transit plan, which would analyze and recommend fully coordinated transit improvements and connections within the County and equitable funding for transit services, in lieu of or as an interim measure until a permanent RTA is formed that would provide regional funding

¹ The Kenosha County Division of Aging Services, through the Aging and Disability Resource Center, provides information, programs, and services pertaining to transportation, healthcare services, elderly housing, meal programs, benefit services, financial assistance, recreation and education programs, and other services for the elderly and disabled.

and management of transit services.

- **✓Program:** Prepare and implement City, Village, and Town neighborhood plans, small area plans, and bicycle and pedestrian plans to provide a coordinated system of bicycle and pedestrian trails, collector streets, and local land access streets.
- **≠Program:** Review the recommended transit service improvements set forth in the forthcoming Kenosha Area Transit System Development Plan 2009-2013 and subsequent updates and implement desired recommendations.
- **∞Program:** Continue operation of transportation services for persons with disabilities and elderly residents through operation of the Care-A-Van, Volunteer Escort, Discovery Bus, and similar programs through the comprehensive plan design year 2035.
- **✓Program:** Develop and implement a detailed bike and pedestrian trail plan for Kenosha County under the guidance of an advisory committee to be formed by Kenosha County. The plan should determine specific locations for bike and pedestrian trails and identify potential links to existing trails in Kenosha County, trails in adjacent counties, and a potential east-west trail in the County.
- **~Program:** Consider including facilities for walking and bicycling during the review and approval of all development projects, including street and highway improvements, to provide an alternative to motor vehicle travel and to promote a healthy lifestyle.
- **∞Program:** Continue working with SEWRPC and WisDOT to continue regional planning efforts and to develop methods to promote interconnection between all transportation modes and systems available within the County and the Region.
- **~Program:** Work with SEWRPC, WisDOT, and local governments to comprehensively review and update the Kenosha County jurisdictional highway system plan and to implement its recommendations.
- **≠Program:** Consider preparing and adopting a highway access management ordinance to regulate access to County highways, and coordinate with local governments to develop consistency between County highway access management regulations and local access management/driveway ordinances.
- **ØProgram:** Encourage the use of the design concept called “Complete Streets.”²
- **∞Program:** Continue to maintain existing County and local streets and highways, including resurfacing, reconstruction, and patching; snow clearing; sign maintenance; and mowing, trash removal, and tree trimming within highway rights-of-way.

Utilities and Community Facilities Element (Chapter XII)

- **∞Program:** Continue the cooperative process among DNR, SEWRPC, and County and local governments for coordinated planning of land use, sewage treatment and disposal, stormwater management, and water supply facilities and services.
- **∞Program:** Continue to develop stormwater management plans and ordinances and joint agreements to provide centralized and/or shared stormwater management facilities, if cost savings and/or service level improvements would result.
- **∞Program:** Continue to implement recommendations from the Kenosha County Hazard Mitigation Plan

² “Complete Streets” are designed and operated to enable safe access for all users, including pedestrians, bicyclists, motorists, and transit riders of all ages and abilities. See www.completestreets.org for more information.

to help protect County residents from natural and environmental hazards.

- **≠Program:** Consider the potential establishment of a County manure storage ordinance and a livestock siting ordinance, as authorized under Sections 92.15 and 92.16, respectively, of the *Wisconsin Statutes*.
- **≠Program:** Study the feasibility of providing permanent household hazardous waste drop-off sites in the County.
- **✓Program:** Work with pharmacies, medical centers, health care providers, hospice providers, and veterinarians in Kenosha County to develop a pharmaceutical collection program.
- **∞Program:** Continue local solid waste collection and disposal services and local recycling programs.
- **∞Program:** County and local governments should continue to work with State officials and agencies, private industry, and WE Energies to support projects that improve air quality.
- **∞Program:** Continue to provide public health, health care, and transportation programs and services offered by Kenosha County government departments and agencies, including the Aging and Disability Resource Center, Health Department, Children and Family Services, and the Veterans Service. The programs and services provided by Kenosha County agencies and departments should be assessed during the annual comprehensive plan review process.
- **∞Program:** Periodically assess local fire, police, and EMS services to determine if additional personnel, facilities, and equipment are needed to maintain an acceptable level of service.
- **∞Program:** Continue to provide dispatch services through the integrated County emergency call dispatch center, which is operated by the Kenosha City/County Joint Services-Communications Center and through local dispatch services.
- **∞Program:** Continue to prepare or initiate a Capital Improvements Program (CIP) in the County and in each local government to help identify major public projects, including land acquisition, equipment acquisition, transportation facility development and maintenance (including roadways and transit), building maintenance and development, and park projects; and funding sources to implement desired projects.
- **∞Program:** Cities, villages, and towns will initiate contacts with surrounding communities and the County prior to constructing new facilities or establishing or expanding community services to determine if there are opportunities for joint facilities and services.
- **∞Program:** Kenosha County will initiate contacts with local governments prior to constructing new facilities or establishing or expanding community services to determine if there are opportunities for joint facilities and services.

Economic Development Element (Chapter XIII)

- **∞Program:** Continue administration of the Kenosha County Revolving Loan Fund (RLF) to create employment opportunities, encourage private investment, and provide a means to finance new and expanding businesses, including small businesses, in the County.
- **∞Program:** Support the continued use of Community Development Block Grant – Economic Development (CDBG –ED) funds. The funds can be used for loans to businesses wishing to expand in Wisconsin or relocate to Wisconsin. The County is able to retain the funds to capitalize the Kenosha County RLF once they are repaid by the businesses.
- **∞Program:** Continue to support UW Extension’s efforts to market and link Kenosha County

agricultural products, including organic products, to restaurants and stores in Kenosha County and surrounding areas.

- **∞Program:** Continue to support KABA in its efforts to develop and distribute educational materials regarding various funding and incentive opportunities available for businesses located in Kenosha County or wishing to relocate to the County, including Wisconsin Department of Commerce, WHEDA, and Federal financing programs inventoried in Part 2 of Chapter XIII and Appendix U.
- **∞Program:** Encourage and assist KABA to continue involvement and partnership with educational and training programs such as Gateway Technical College Associate's Degree in Management.
- **∞Program:** Encourage and assist KABA's Education Foundation in its efforts to develop education initiatives with local schools to improve the quality of education and increase the number of County residents completing post-high school education.
- **≠Program:** Establish an outreach program to potential employees, including high school students, college students, and their parents to match desired skills.
- **~Program:** Identify sustainable lands to be retained in long-term agricultural use in consultation with Kenosha County and local governments.
- **✓Program:** Develop telecommunications and technology strategies for the County to ensure access to wireless voice and data communications networks for County businesses and residents, including residents who telecommute or operate a home-based business.
- **∞Program:** Support KABA and the Milwaukee 7 in promoting Kenosha County to businesses considering expanding or relocating to Kenosha County from outside the Southeastern Wisconsin Region.
- **≠Program:** Develop an incentive program to attract businesses that utilize sustainable and environmentally-friendly economic development concepts such as the use of renewable energy sources; building and landscape designs that reduce the use of toxic chemicals, reduce the use of impervious building materials, and utilize other "green" development measures; and provide jobs that pay wages sufficient to meet the cost of living in Kenosha County.

Intergovernmental Cooperation Element (Chapter XIV)

- **∞Program:** Provide an arrangement for continuing dialog about land use planning and regulation issues and boundary issues among local governments, and between local governments and Kenosha County. The MJAC and Kenosha County Council of Governments are existing multi-jurisdictional groups that may provide the organizational setting for such discussions.
- **∞Program:** If requested by local governments, Kenosha County will provide technical assistance and data to assist in the development of boundary agreements, subject to staff availability.
- **≠Program:** Consider the preparation of a multi-jurisdictional stormwater management plan, including counties and local governments adjacent to Kenosha County within the same watershed.
- **∞Program:** Continue working with SEWRPC to prepare new and updated elements of the regional plan, such as the regional transportation, water quality, water supply, natural areas, and telecommunications plans and the County jurisdictional highway system plan.
- **∞Program:** Continue to involve local governments when County land use-related plans or ordinances or plans for developing or delivering County facilities or services are prepared or comprehensively updated.

- **∞Program:** Work with school districts and/or adjacent communities in the district, on request, to assess the impact of proposed new subdivisions on district facilities. Consider inviting school district officials to County and local meetings when new development projects will be discussed, and provide copies of meeting agendas to enhance communications.

Zoning Ordinances

Consistency Between the Multi-Jurisdictional Comprehensive Plan and County Ordinances

Section 66.1001 (3) of the Statutes requires that the following ordinances be consistent with a unit of Government's comprehensive plan by January 1, 2010:

- Official mapping established or amended under Section 62.23 (6) of the Statutes.
- County or local subdivision regulations under Section 236.45 or 236.46 of the Statutes.
- County zoning ordinances enacted or amended under Section 59.69 of the Statutes.
- City or village zoning ordinances enacted or amended under Section 62.23 (7) of the Statutes.
- Town zoning ordinances enacted or amended under Section 60.61 or 60.62 of the Statutes.
- Zoning of shorelands or wetlands in shorelands under Section 59.692 (for counties), 61.351 (for villages), or 62.231 (for cities) of the Statutes.

At the time of this annual report, Kenosha County's ordinances mentioned above are consistent with the multi-jurisdictional comprehensive plan. Consideration will also be given to the following potential changes to the County zoning ordinance, which have been identified in Town land use and comprehensive plans:

- **≠Program:** The addition of "open space" suburban cluster subdivision options in the R-2 and R-3 Districts to foster and accommodate "open space" suburban cluster subdivisions served by public sanitary sewer service and which would be located within approved sanitary sewer service areas.
- **≠Program:** Site plan review for uses proposed in residential zoning districts.
- **~Program:** The addition of landscaping standards and bufferyard requirements.
- **ØProgram:** Amend the Farmland Preservation Zoning Ordinance per s. 91.34, Wis. Stats., by December 31, 2015 to be consistent with the revised FPP.

UPDATED INVENTORY DATA

None.

PROPOSED PLAN TEXT AMENDMENTS

None.

SUMMARY

In the sixth year of implementation, Kenosha County staff has continued to work on some significant programs as recommended by the multi-jurisdictional comprehensive plan. These programs include work on study areas for integrated land use and transportation plans around IH 94 interchanges and plans for these areas to refine the land use development pattern set forth on Map 65, and continued work to update the Kenosha County Land Division Control Ordinance as well as landscaping standards and bufferyard requirements found in the county zoning code.

Between January 1, 2016 and December 31, 2016 the adopted land use plan map for Kenosha County had 19 amendments. This included four amendments within the City of Kenosha, two amendments within the Village of Bristol, four amendments within the Village of Pleasant Prairie, one within the Village of Somers and eight amendments within the unincorporated areas of Kenosha County (Towns of Brighton, Paris, Salem, Randall, Somers and Wheatland).

Summary of Recommended Programs and Priorities

Below is a summary of completed, continuous, in-progress, not addressed, and discontinued programs related to the *Kenosha County multi-jurisdictional comprehensive plan* conducted by Kenosha County staff during the period of January 1, 2016 – December 31, 2016.

	Completed ✓	Continuous ∞	In-Progress ~	Not Addressed ≠	Discontinued Ø
Agricultural, Natural, & Cultural Resources Element (27)	1 (3.7%)	17 (63.0%)	0 (0.0%)	4 (14.8%)	5 (18.5%)
Land Use Element (10)	0 (0.0%)	6 (60.0%)	3 (30.0%)	1 (10.0%)	0 (0.0%)
Housing Element (7)	0 (0%)	4 (57.1%)	1 (14.3%)	2 (28.6%)	0 (0.0%)
Transportation Element (11)	2 (18.2%)	3 (27.3%)	2 (18.2%)	3 (27.3%)	1 (9.1%)
Utilities and Community Facilities Element (14)	1 (7.1%)	11 (78.6%)	0 (0%)	2 (14.3%)	0 (0.0%)
Economic	1 (9.1%)	7 (63.6%)	1 (9.1%)	2 (18.2%)	0 (0.0%)

Development Element (11)					
Intergovernmental Cooperation Element (6)	0 (0.0%)	5 (83.3%)	0 (0.0%)	1 (16.7%)	0 (0.0%)
Zoning Changes (4)	0 (0.0%)	0 (0.0%)	1 (25.0%)	2 (50.0%)	1 (25.0%)
TOTAL: (90)	5 (5.6%)	53 (58.9%)	8 (8.8%)	17 (18.8%)	7 (7.8%)

All other programs recommended in the multi-jurisdictional comprehensive plan that are not included in this annual report are considered on-going programs that should continue to be carried out throughout the life of the plan.

Summary of Updated Inventory Data

None.