

2011 - 2012

ANNUAL REPORT



PREPARED BY:

John F. Roth, Planning Consultant
Kenosha County Department of
Planning & Development

<p>Kenosha County Officials</p> <p>County Executive</p> <p>Jim Kreuser</p> <p>County Board of Supervisors</p> <p>Jeffrey Gentz – Chairperson Edward Kubicki – Vice Chairperson William Grady Terry W. Rose Angelina Montemurro Rick K. Dodge Dayvin Hallmon Ronald L. Johnson John J. O'Day David L. Arrington Ronald J. Frederick Gabe Nudo Aaron Kohlmeier Boyd Frederick Mark A. Molinaro Jr. Daniel C. Esposito Douglas J. Noble Anita Johnson Michael J. Skaltzky Michael L. Underhill Kimberly Breunig Erin Decker Dennis Elverman</p>	<p>Multi-Jurisdictional Comprehensive Planning Advisory Committee</p> <p>Voting Members</p> <p>Kim Breunig..... Planning, Development & Extension Education Committee Chairperson</p> <p>Bill Morris..... Town of Somers Vice-Chairperson</p> <p>Jeff Labahn..... City of Kenosha Mike Farrell..... Village of Bristol Jean Werbie-Harris..... Village of Pleasant Prairie Joanne Maggio Village of Silver Lake Jerry Helmert..... Town of Brighton John Holloway Town of Paris Dennis Faber..... Town of Salem William Glembocki..... Town of Wheatland</p> <p>Non-Voting Members</p> <p>Todd Battle..... Kenosha Area Business Alliance (KABA) Len Brandrup (retired)... Kenosha Area Transit Mark Edquist..... Farming Community Representative Pat Finnemore..... Kenosha Unified School District Colleen Fisch..... Kenosha-Racine Land Trust Marlene Goodson..... Village of Paddock Lake Sandie Hansen..... Citizen Representative Lauren Fox Town of Randall Dr. Scott Pierce..... Westosha Central High School District Lena Schlater..... Realty Industry Representative Gary Sipsma..... Kenosha County Department of Public Works Nancy Washburn Building Industry Representative Lon Wienke..... Village of Twin Lakes</p> <p>Alternate Advisory Committee Voting Members: Rich Schroeder, City of Kenosha; Randy Kerkman, Village of Bristol; Peggy Herrick, Village of Pleasant Prairie; Jeff Albrecht, Village of Silver Lake; David DeVito, Town of Brighton; Virgil Gentz, Town of Paris; Fred Loomis, Town of Somers; Bradley Zautcke, Town of Salem; Sheila Siegler, Town of Wheatland.</p>
<p>Planning, Development & Extension Education Committee Members</p> <p>Kimberly Breunig – Chairperson Erin Decker Michael L. Underhill Rick K. Dodge Michael J. Skaltzky</p>	<p>Staff Support</p> <p>Kenosha County</p> <p>George E. Melcher..... Director, Department of Planning & Development Andy Buehler..... Director, Division of Planning Operations John F. Roth..... Planning Consultant</p>

Contents

INTRODUCTION	1
USE OF THE PLAN TO GUIDE COUNTY ACTIVITIES	3
 LAND USE PLAN MAP AMENDMENTS: 2011 - 2012	
CITY OF KENOSHA	5
VILLAGE OF PLEASANT PRAIRIE.....	6
TOWN OF SALEM.....	7
TOWN OF WHEATLAND.....	7
KENOSHA COUNTY (unincorporated areas)	7
KENOSHA COUNTY PLANNED LAND USE MAP.....	9
 RECOMMENDED PROGRAMS & PRIORITIES	
ARICULTURAL, NATURAL, & CULTURAL RESOURCES ELEMENT (CHAPTER VIII).....	10
LAND USE ELEMENT (CHAPTER IX)	12
HOUSING ELEMENT (CHAPTER X).....	13
TRANSPORTATION ELEMENT (CHAPTER XI)	14
UTILITIES AND COMMUNITY FACILITIES ELEMENT (CHAPTER XII).....	15
ECONOMIC DEVELOPMENT ELEMENT (CHAPTER XIII)	16
INTERGOVERNMENTAL COOPERATION ELEMENT (CHAPTER XIV).....	16
ZONING ORDINANCES	17
 UPDATED INVENTORY DATA	18
 PROPOSED PLAN AMENDMENTS	
MULTI-JURISDICTIONAL COMPREHENSIVE PLAN TEXT AMENDMENTS	18
 SUMMARY	
SUMMARY OF RECOMMENDED PROGRAMS AND PRIORITES	19
SUMMARY OF UPDATED INVENTORY DATA.....	20

INTRODUCTION

Per Part 8 of Chapter XV – Implementation Element of the multi-jurisdictional comprehensive plan (*A Multi-Jurisdictional Comprehensive Plan for Kenosha County: 2035*), Kenosha County Planning and Development Department, has prepared this draft annual report on plan implementation for review by local governments and County officials. This draft annual report includes a list of map amendments made to the plan during the year; major changes to County or local ordinances made to implement the plan (such as the adoption of new zoning districts); a list of new or updated plans related to the multi-jurisdictional comprehensive plan (such as farmland protection or park and open space plans); a list of updated inventory information available from the County or Southeastern Wisconsin Regional Planning Commission (SEWRPC); proposed plan text amendments; and other information identified by local or County officials.

The following is an inventory of work products and other activities related to the *multi-jurisdictional comprehensive plan* conducted by Kenosha County Department of Planning & Development during the period of May 21, 2011 – May 21, 2012.

Use of the Plan to Guide County Activities

The multi-jurisdictional comprehensive plan (*A Multi-Jurisdictional Comprehensive Plan for Kenosha County: 2035*) served as a guide in the creation and implementation of several County activities. Below is a summary of select key programs implemented from the multi-jurisdictional comprehensive plan.

Farmland Protection Plan

Per program recommendations in Chapter VIII – Agricultural, Natural, and Cultural Resources Element, Kenosha County staff has prepared an update to the Kenosha County farmland preservation plan¹ (FPP). The new FPP will draw on the existing plan and the *multi-Jurisdictional comprehensive plan*.

The current plan was adopted in 1981. Governor Doyle and the Department of Agriculture, Trade and Consumer Protection (DATCP) adopted revisions, known as the “Working Lands Initiative”, to Chapter 91 in Assembly Bill 75 which was signed into law as 2009 Wisconsin Act 28 in June 2009. The new law offers new tax incentives and program options to preserve farmland and protect the environment by expanding and modernizing the state’s existing farmland preservation program and creating new tools to assist in local program implementation. More specifically the Working Lands Initiative will:

- Pursuant to Section 91.10 and 91.14, Wis. Stats., require Kenosha County to update and adopt its farmland preservation plan in accordance with Chapter 91.01(17), Wisconsin State Statutes, by December 31, 2011, to enable farmers to continue to be eligible for the state tax farmland preservation tax credit.

¹ SEWRPC Community Assistance Planning Report No. 45, *A Farmland Preservation Plan for Kenosha County Wisconsin*, June 1981.

- The Wisconsin Farmland Preservation Act calls for continuous review and evaluation of changing needs and conditions and requires Kenosha County to update and certify the county farmland preservation plan every 10 years.
- Enable farmers to form agricultural enterprise areas and enter into farmland preservation agreements with DATCP.
- Require Kenosha County to monitor each farm for which an owner claims farmland preservation tax credits for compliance with state land and water conservation standards.
- Provide State funding to local governments or non-profit conservation organization, for the purchase of permanent agricultural conservation easements from willing landowners.

The *Kenosha County Farmland Preservation Plan* was prepared by the Kenosha County Department of Planning & Development with input from, and with the oversight of, the Farmland Preservation Advisory Committee and through public open houses and meetings. The *Kenosha County Farmland Preservation Plan* contains data, maps, goals, objectives policies, actions required by, and in accordance with section 91.10(1) of the Wisconsin State Statutes and has been reviewed for consistency with the *Multi-jurisdictional Comprehensive Plan for Kenosha County: 2035*. The Kenosha County Land & Water Conservation Committee approved the adoption of the *Kenosha County Farmland Preservation Plan (2nd Edition)* on July 18, 2011

On Wednesday, September 14, 2011 the Kenosha County Planning, Development & Extension Education Committee held an informational meeting followed by a public hearing at the Kenosha County Center, Public Hearing Room, on the update to the *Kenosha County Farmland Preservation Plan (2nd Edition)* (FPP). This second edition Farmland Preservation Plan for Kenosha County is intended as an update to the initial FPP, adopted by the County Board in 1981. This ten-year plan will be used as a guide for the Kenosha County, the Village of Bristol and the Village of Pleasant Prairie in carrying out their duties related to farmland protection in the County. Adoption of the plan is intended to meet and comply with Wisconsin Farmland Preservation Program designated under s. 91.38 of the Wisconsin State Statutes, so as to allow the farmers the opportunity to continue to claim the farmland preservation tax credit permitted pursuant to section 71.613 of the Wisconsin State Statutes. Following the informational meeting and public hearing the Kenosha County Planning, Development & Extension Education Committee voted unanimously to recommend adoption by the Kenosha County Board of Supervisors subsequent to certification by DATCP.

As a result of differing interpretations of the requirements set forth under Ch. 91 of the Wisconsin State Statutes Kenosha County was granted an extension of its recertification deadline for the *Kenosha County Farmland Preservation Plan* until December 31, 2013. Kenosha County met with DATCP and resolved the outstanding issues and final development is in progress. The Kenosha County Planning & Development staff is in the process of making the required changes and resubmitting the plan. If the plan then meets the requirements it will be certified by DATCP and brought to the Kenosha County Board of Supervisors for final review and approval. The *Multi-jurisdictional Comprehensive Plan for Kenosha County: 2035* will be amended to include reference of the up-dated Farmland Preservation Plan. The *Kenosha County Farmland Preservation Plan (2nd Edition)* may be viewed online at <http://www.co.kenosha.wi.us/plandev/conservation/farmland.html>. The plan may also be viewed in the Department of Planning & Development at the Kenosha County Center.

Park and Open Space Plan

Per program recommendations in Chapter VIII – Agricultural, Natural, and Cultural Resources Element, Kenosha County staff and SEWRPC have completed an update to the *Kenosha County Park and Open Space Plan* (POSP) ². The new POSP will draw on the existing plan and be compatible with the multi-jurisdictional comprehensive plan.

The previous plan was adopted in 1988. In 2009, the County requested assistance from SEWRPC to prepare a new update of the plan, extending the planning horizon to 2035. Working within the framework of the multi-jurisdictional comprehensive plan, the new park and open space plan is based on updated information related to: land use; population levels and distribution; anticipated growth and development; natural resources; and park and open space acquisition and development activities. The updated plan will also maintain the County's eligibility for Federal and State aid to support the acquisition and development of park and open space sites and facilities.

The plan included information about Kenosha County pertinent to park and open space planning, such as:

- Existing resident population, land use patterns, and natural resource base
- Existing park sites and facilities and open space lands
- Park and open space preservation, acquisition, and development objectives and principles
- Analysis of park and open space needs
- Park and open space recommendations
- Actions required to carry out these recommendations

The open space preservation element consists of four components: 1) The preservation of primary environmental corridors, secondary environmental corridors, and isolated natural resource areas; 2) the preservation of natural areas, critical species habitat sites, and geological areas in accordance with the recommendations set forth in the regional natural areas protection and management plan; 3) the protection of open space lands located within project boundaries established by the State and The Nature Conservancy; and 4) the preservation of prime agricultural lands.

It is recommended that a total of 37,735 acres of open space lands, or about 21 percent of Kenosha County, be protected through a combination of public or nonprofit conservation organization ownership, or through the application of protective zoning.

Under the outdoor recreation element of the plan, eight major parks would be provided within the County. All eight major parks are existing parks in Kenosha County. The eight existing major parks are: Bong State Recreation Area, owned by the Wisconsin Department of Natural Resources; Brighton Dale Park and Golf Course, Bristol Woods Park, Fox River Park, Petrifying Springs Park and Golf Course,

² SEWRPC Community Assistance Planning Report Number 131, *A Park and Open Space Plan for Kenosha County*, November 1987, and amended October 1999.

Silver Lake Park, and West End Park, owned by Kenosha County; and Prairie Springs Park, owned by the Village of Pleasant Prairie.

The plan recommends that Kenosha County acquire additional lands for the West End Park, develop additional facilities at Brighton Dale Park, Fox River Park, and West End Park. The plan also recommends that the Wisconsin Department of Natural Resources continue to acquire lands at Bong Recreation Area.

Under the recommended plan, a 62 -mile system of recreation trails would be provided by Kenosha County to enable participation in such activities as bicycling, hiking, nature study, and ski touring-including the existing 16-mile Kenosha County Bicycle Trail and the proposed Fox River Corridor, Des Plaines River Corridor, and Pike River/Creek Corridor.

Under the plan, it is recommended that a public boat access site be acquired and developed by the Department of Natural Resources on Benedict Lake, Benet/Shangrila Lake, Cross Lake, Dyer Lake and Voltz Lake. It is further recommended that Kenosha County pursue opportunities to provide access to Lake Michigan and the inland Lakes for beach swimming, shore fishing, and passive recreational activities, as such opportunities arise. In addition, it is recommended that Kenosha County consider the development of a water trail that would be located on the Fox, Des Plaines, and Pike Rivers, and along the Lake Michigan shoreline.

On April 17, 2012 the Kenosha County Board of Supervisors adopted A Park and Open Space Plan for Kenosha County.

Comprehensive Bicycle Plan for Kenosha County

Per program recommendations in Chapter XI – Transportation Element, Kenosha County staff had applied for and had been awarded funding under the State Transportation Enhancement/Bicycle and Pedestrian Facilities Program to prepare a comprehensive bicycle plan for Kenosha County. The proposed multi-jurisdictional planning document (*A Comprehensive Bicycle Plan for Kenosha County: 2025*) will act as the guide for implementing projects over the next 15 years to improve bicycling conditions in Kenosha County by developing a safe, accessible bicycle network throughout the County, while also creating links to existing and planned bicycle facilities in adjacent counties in Wisconsin and Illinois. This plan will prioritize and detail education, encouragement, enforcement, evaluation, and engineering projects to increase bicycling as a viable alternative mode of transportation within Kenosha County and the region. In the fall of 2011, the County completed a selection process to determine which consultant would prepare the Comprehensive Bike Plan. Alta Planning and Design partnered with the Wisconsin Bike Federation and were selected to write the plan. Contracts have been signed and the project is expected to begin in the spring of 2012.

Kenosha County has already created a steering committee, County Executive Jim Kreuser's Blue Ribbon Committee on Bicycle Planning and Development, consisting of representatives from the County's local municipalities, the Southeastern Wisconsin Regional Planning Commission (SEWRPC), Kenosha County staff, and selected stakeholders from Kenosha County with an interest in the planning and development of Kenosha County's bicycle routes. In July of 2010, the committee completed work with the Bicycle

Federation of Wisconsin to form a shared vision for bicycling and to prioritize projects to improve bicycling conditions in Kenosha County. The committee arrived at the following vision statement:

In the future, bicycling in Kenosha County will be an accessible, safe, healthy, practical and viable form of transportation and recreation. The bicycle network will provide convenient connections between communities, places of employment, parks, schools, recreation areas, retail establishments and other popular destinations.

In addition, the committee identified specific projects to be pursued by Kenosha County as high priorities, with the top priority being the preparation of a comprehensive countywide bicycle plan. Going forward, the committee will act to oversee the development of this comprehensive bicycle plan.

LAND USE PLAN MAP AMENDMENTS: 2011 – 2012

The following is a list of land use plan map amendments that have been made to the multi-jurisdictional comprehensive plan during the period of May 21, 2011 – May 21, 2012.

Δ Notes that an amendment to the Adopted Land Use Plan Map for Kenosha County: 2035 (Map 65) was required. Comparisons of plan categories between the local plan maps and the County map are shown in Appendix S of the multi-jurisdictional comprehensive plan.

City of Kenosha

Ordinance No.39-11 Δ

An Ordinance amending the comprehensive plan for the City of Kenosha from Industrial to Commercial on tax parcel 07-222-19-301-35 located on the southeast corner of the intersection of I-94 and Burlington Road. Adopted by the City of Kenosha on August 15, 2011.

Ordinance No. 40-11 Δ

An ordinance amending the comprehensive plan for the City of Kenosha from Industrial to Commercial on tax parcel numbers 04-122-12-130-004, 005, 006, 008, and 013 located on the northeast corner of 30th Avenue and 76th Street. Adopted by the City of Kenosha on August 15, 2011.

Ordinance No. 52-11 Δ

An ordinance amending the comprehensive plan for the City of Kenosha to include A New Comprehensive Outdoor Recreation Plan and Master Plans for Petzke Park, Simmons Island Park, Strawberry Creek and Sunrise Park, Adopted by the City of Kenosha on September 19, 2011.

Ordinance No. 55-11 Δ

An ordinance amending the comprehensive plan for the City of Kenosha from Medium-High Density Residential to Commercial on part of tax parcel 01-122-01-403-017. Adopted by the City of Kenosha on October 3, 2011.

Ordinance No. 60-11 Δ

An ordinance amending the comprehensive plan for the City of Kenosha from Medium Density Residential to Future Street Right-Of-Way adding a portion of right-of-way at 39th Avenue and 24th Street. Adopted by the City of Kenosha on October 17, 2011.

Ordinance No. 61-11 Δ

An ordinance amending the comprehensive plan for the City of Kenosha to change the land use category of Medium-High Density Residential to Future Street Right -Of- Way for properties at 51st Street between 17th and 18th Avenues. Adopted by the City of Kenosha on October 17, 2011.

Ordinance No. 68-11Δ

An Ordinance amending the comprehensive plan for the City of Kenosha to change the land use designation from Industrial to Parks and Recreation for a parcel west of 14th Avenue between 27th Street and 31st Street. In addition, changing the land use designation from Industrial to Government and Institutional on a portion of a parcel east of 14th Avenue between 24th Street and 30th Street. Adopted by the City of Kenosha on December 5, 2011.

Ordinance No. 02-12Δ

An ordinance amending the comprehensive plan for the City of Kenosha to change the land use designation from Medium Density Residential to Government and Institutional for a portion of a parcel located immediately east of the corner of 60th Street and 88th Avenue. Adopted by the City of Kenosha on January 18, 2012.

Ordinance No. 06-12Δ

An ordinance amending the comprehensive plan for the City of Kenosha to remove a portion of 55th Street future right-of-way from 47th Avenue to 49th Avenue as a future street from the Official Map. Adopted by the City of Kenosha on February 20, 2012.

Ordinance 07-12Δ

An ordinance to amend the comprehensive plan for the City of Kenosha to include a new Kenosha County Hazards Mitigation Plan 2011-2015. Adopted by the City of Kenosha on February 20, 2012.

Ordinance No. 08-12Δ

An ordinance to amend the comprehensive plan for the City of Kenosha to change the land use designation from Industrial to Commercial on a parcel located on the east side of 14th Avenue and south of the intersection of 35th Street. Adopted by thy City of Kenosha on March 5, 2012

Ordinance No. 10-12Δ

An ordinance to amend the comprehensive plan for the City of Kenosha from High Density Residential to Commercial on 6 parcels located west of the intersection of Green Bay Road and 56th Street . Adopted by the City of Kenosha on March 5, 2012.

Village of Pleasant Prairie

Ordinance No. 12-03 Δ

An ordinance amending the Village of Pleasant Prairie 2035 comprehensive plan with reference to a portion of the Barnes Creek Neighborhood Plan 2 of Appendix 9-3. Said area is generally located at the southeast corner of 22nd Avenue and 91st Street. Adopted by the Village of Pleasant Prairie on January 30, 2012.

Ordinance No. 12-06 Δ

An ordinance amending the Village of Pleasant Prairie 2035 comprehensive plan to amend a portion of the River View Neighborhood Plan 24 of Appendix 9-3. In addition to change the Low –Density Residential land use designation on part of Lot 3 and Lots 4-8 of Block 8 of the Chateau Eau Plaines Subdivision to the Commercial land use designation and to remove the Urban Reserve designation on tax parcel 91-4-122-071-0026. Adopted by the Village of Pleasant Prairie on February 6, 2012.

Ordinance No. 12-16 Δ

An ordinance amending the Village of Pleasant Prairie 2035 comprehensive plan for the purpose of correcting errors on all or portions of several properties within Carol Beach Estates Subdivision Unit #3 identified as tax parcels 93-4-123-292-0425, 93-4-123-292-0430, 93-4-123-292-0435, 93-4-123 - 292-0440, 93-4-123-292-0445, 93-4-123-301-0195, 93-4-123-301-0200, 93-123-301-0205, 93-4-123-301-0210, and 93-4-123-301-0240. These parcels were changed from “Other Transportation, Communications, and Utilities into correct Primary Environmental Corridor land use designation. Adopted by the Village of Pleasant Prairie on March 19, 2012.

Ordinance No. 12-18 Δ

An ordinance amending the Village of Pleasant Prairie 2035 comprehensive plan to change Outlot 15 of the Prairie Ridge Subdivision (tax parcel 91-4-122-081-0300) from the proposed Commercial Office designation to a Residential designation. Adopted by the Village of Pleasant Prairie on May 7, 2012.

Town of Salem

Ordinance No.12-05-14

An ordinance amending the Town of Salem Comprehensive Plan 2035 from Commercial to Medium-Density Residential on tax parcel 67-4-120-303-0895. Adopted by the Town of Salem on May 14, 2012.

Town of Wheatland

Ordinance 2011-003Δ

An ordinance to amend the Town of Wheatland Comprehensive Plan 2035 from Commercial and Suburban-Density Residential to Commercial on tax parcel 95-4-219-323-0305. Adopted by the Town of Wheatland on May 2, 2011.

Ordinance 2012-001Δ

An ordinance to amend the comprehensive plan for the Town of Wheatland 2032 from Commercial and Park and Recreation to Park and Recreation on tax parcel 95-4-119-074-0981. In addition amending the comprehensive plan from Commercial to Medium- Density Residential on tax parcel 95-4-119-074-0972. Adopted by the Town of Wheatland on March 5, 2012.

Kenosha County

Ordinance No. 2011-6 Δ

An ordinance to amend the multi-jurisdictional comprehensive plan (*A Multi-Jurisdictional Comprehensive Plan for Kenosha County: 2035*) to change the land use category from Suburban-Density Residential to Business/Industrial Park on the following tax parcel numbers :45-4-221-131-0115, 45-4-221-131-0120, 45-4-221-131-0125, 45-4-221-131-0105, 45-4-221-131-0100, 45-4-221-134-0400, 45-4-221-134-0430, 45-4-221-134-0420, 45-4-221-134-0410, 45-4-221-134-0405, 45-4-221-251-0105, 45-4-221-244-0455, 45-4-221-244-0450, 45-4-221-244-0445, 45-4-221-244-0440, 45-4-221-244-430, 45-4-221-254-0135, and 45-4-221-254-0140 in the Town of Paris. Adopted by Kenosha County: August 23, 2011.

Ordinance No. 2011-12 Δ

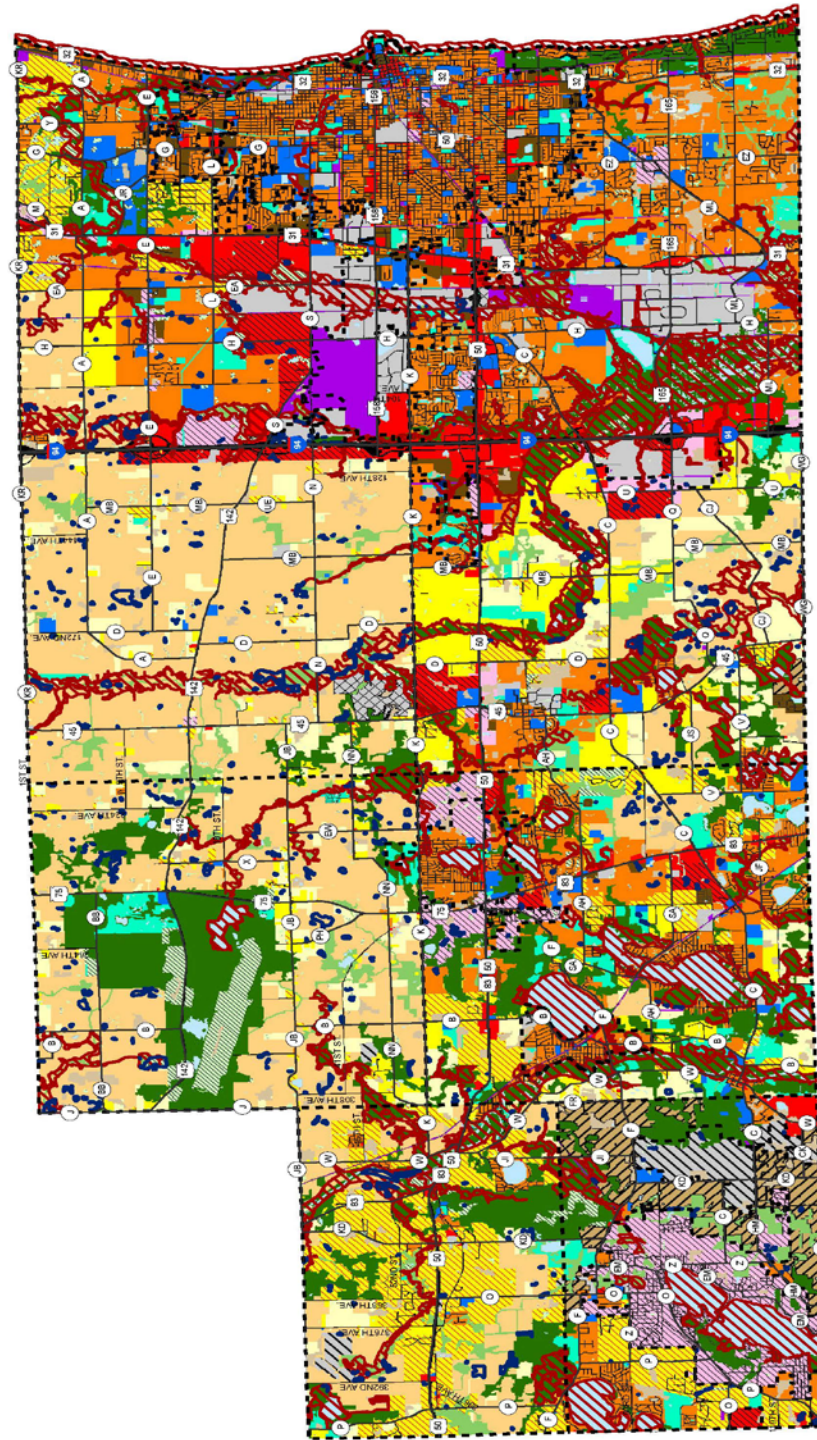
An ordinance to amend the multi-jurisdictional comprehensive plan (*A Multi-Jurisdictional Comprehensive Plan for Kenosha County: 2035*) to change the land use category from Park and Recreational to

Suburban-Density Residential on tax parcel No. 60-4-119-163-0800 in the Town of Randall. Adopted by Kenosha County: September 20, 2011.

Ordinance No. 2012-9Δ

An ordinance to amend the multi-jurisdictional comprehensive plan (*A Multi-Jurisdictional Comprehensive Plan for Kenosha County 2035*) to change the land use category from Farmland Protection to Park and Recreation on tax parcels 30-4-220-123-0100 and 30-4-220-123-0700 in the Town of Brighton. Adopted by Kenosha County on May 15, 2012.

ADOPTED LAND USE PLAN MAP FOR KENOSHA COUNTY: 2035 (As Of May 21, 2012)



RECOMMENDED PROGRAMS & PRIORITIES

Part 7 of Chapter XV – Implementation Element, included a compilation of programs from each of the plan elements to implement the recommendations set forth in the plan. These programs were to be considered as having the highest priority in implementing the plan and were not listed in priority order.

The following are those recommended high-priority programs as included in the Implementation Element and how they have been addressed by Kenosha County staff during the period of May 21, 2011 – May 21, 2012. The recommended programs have been categorized as completed, continuous, in-progress, not addressed, or discontinued (see table below).

Completed ✓	Continuous ∞	In-Progress ~	Not Addressed ≠	Discontinued Ø
Programs that have been addressed and completed	Programs that are on-going throughout the plan year 2035	Programs that have been addressed but are not yet complete	Programs that have not yet been addressed	Programs that have been discontinued

Note: The following information on recommended programs is up to date and accurate to the best of County staff's knowledge at the time of publication.

Agricultural, Natural, & Cultural Resources Element (Chapter VIII)

- **∞Program:** Continue to support the Kenosha County Planning and Development Department in its efforts to protect land and water resources, including farmland, and to implement recommendations set forth in the County Land and Water Resource Management Plan.
- **≠Program:** Study the concept of a transfer of development rights (TDR) program and/or a purchase of development rights (PDR) program for local and county government use that focuses on the protection of agricultural areas.
- **~Program:** Update the *Kenosha County Farmland Preservation Plan* to reflect changes to the Wisconsin Farmland Preservation Program approved by the State Legislature in response to the Working Lands Initiative report. Encourage local governments to participate in developing and implementing the updated County Farmland Preservation Plan.
- **~Program:** Designate Agricultural Enterprise Areas (AEA) containing contiguous lands devoted primarily to agricultural use as recommended in the updated County Farmland Preservation Plan. An AEA may be part of a broader strategy to protect farmland and promote agriculture and agriculturally-related development.
- **~Program:** Encourage the implementation of the Purchase of Agricultural Conservation Easements (PACE) program, which provides State funding for the purchase of such easements from willing landowners in order to preserve agricultural capacity and conserve unique agricultural resources.

- **~Program:** Update the Kenosha County zoning ordinance to meet or exceed farmland preservation standards in accordance with Section 71.613 and Chapter 91 of the *Statutes*, in order to maintain a farmer's eligibility for State income tax credits and to implement the County Farmland Preservation Plan.
- **∞Program:** Continue to encourage intergovernmental cooperation to protect farmland, including the use of boundary agreements.
- **~Program:** Work with KABA (Kenosha Area Business Alliance) to develop programs to promote an agricultural economic cluster of farming operations and appropriate agri-businesses on lands designated for agricultural use on the County Land Use Plan Map (Map 65 in Chapter IX).
- **∞Program:** Continue to protect lowland portions of environmental corridors and other lowland areas, including wetlands, through enforcement of C-1 district regulations set forth in the Kenosha County General Zoning and Shoreland/Floodplain Zoning Ordinance.
- **∞Program:** Continue to protect upland portions of environmental corridors and other upland areas through enforcement of C-2 district regulations set forth in the Kenosha County General Zoning and Shoreland/Floodplain Zoning Ordinance.
- **∞Program:** Continue to work with the Kenosha/Racine Land Trust and other NCOs to protect primary environmental corridors, natural areas, and critical species habitat sites through fee simple acquisitions and conservation easements.
- **∞Program:** Work to protect environmental corridors and natural areas through County and local plat review processes.
- **≠Program:** Consider amending the Rural Cluster Overlay District in the County zoning ordinance to require stewardship plans for the management of common open space in conservation subdivisions.
- **∞Program:** Support and, where applicable, implement sanitary sewer and stormwater management standards recommended in the regional water quality management plan update and subsequent amendments.
- **Completed ✓:** Incorporate the updated floodplain mapping from the Kenosha County floodplain map modernization project into the County zoning maps following approval of the maps by the DNR and FEMA.
- **∞Program:** Continue to administer and enforce floodplain and shoreland regulations included in the Kenosha County General Zoning and Shoreland/Floodplain Zoning Ordinance.
- **∞Program:** Continue to implement County ordinance requirements related to land suitability to avoid inappropriate development on severe structural or severe wet soils.
- **∞Program:** Maintain, update, and implement recommendations set forth in the Kenosha County Hazard Mitigation
- **∞Program:** Plan as funding becomes available, including acquisition of properties in the floodplain without "buildable" areas.
- **≠Program:** Consider amending the Kenosha County General Zoning and Shoreland/Floodplain Zoning Ordinance to address Lake Michigan bluff erosion more comprehensively, and develop bluff setback requirements for new development and redevelopment projects, with assistance from the Wisconsin Coastal Management Program and Wisconsin Sea Grant.

- **∞Program:** Continue to cooperate with Waste Management/Pheasant Run Landfill to conduct the countywide hazardous household waste collection program, and incorporate other recycling efforts and awareness into the program.
- **∞Program:** Continue to provide education and assistance to citizens on potential environmental problems that may impact human health, including home health hazards such as mold, lead, and asbestos; indoor and outdoor air quality; solid and hazardous waste; and pest control.
- **≠Program:** Work with local governments and aggregate producers to identify suitable areas with commercially viable sources of sand and gravel. Ideally, suitable areas should be located in sparsely populated areas and not have significant surface natural resources. Exceptions may be considered for innovative mining methods that have minimal impacts on surrounding residents and land uses.
- **Completed ✓:** Update the County park and open space plan, including updates from the regional natural areas and critical species habitat plan, to maintain eligibility for DNR Stewardship funding.
- **∞Program:** Continue the development, enhancement, and management of recreational trail facilities to ensure connectivity of such facilities in Kenosha County including potential water trails, as illustrated in Map 61 and potential area-wide recreational bicycle trails, as illustrated in Map 63.
- **∞Program:** Preserve and maintain structures with significant historical value owned by the County.
- **∞Program:** Preserve and maintain sites owned by the County that have significant archaeological value.

Land Use Element (Chapter IX)

- **∞Program:** Kenosha County will continue to work with Towns to develop land use plans and plan amendments for inclusion in the multi-jurisdictional plan that can be implemented through County land use-related ordinances, and identify and adopt needed amendments to such ordinances.
- **∞Program:** Kenosha County will continue to administer and enforce the Kenosha County General Zoning and Shoreland/Floodplain Zoning Ordinance in unincorporated areas in accordance with State and Federal requirements and the land use plan map (Map 65).
- **≠Program:** Communities may establish urban and rural design guidelines as a Town ordinance for which compliance may be mandatory (regulatory approach by converting guidelines into ordinance regulations) or voluntary (nonregulatory approach by encouraging developers to follow a design manual). As an integral part of this comprehensive plan and in unincorporated Towns, Towns may establish Town-specific urban and rural design guidelines for residential, commercial, industrial, office, business park, village/town center, recreational, and institutional development, provided said design guidelines are first approved by Kenosha County before a design guideline ordinance is enacted by a Town.
- **∞Program:** Encourage a full range of housing structure types and sizes, including single-family, two-family, and multi-family dwelling units, in sanitary sewer service areas to provide affordable housing options for households of all income levels, ages, and special needs projected for Kenosha County in 2035.
- **∞Program:** Encourage the development of nursing homes, community-based residential facilities, and other types of assisted living facilities for the elderly and persons with disabilities in appropriate locations.

- **≠Program:** The County and affected local governments should cooperatively identify study areas for integrated land use and transportation plans around IH 94 interchanges and prepare plans for these areas to refine the land use development pattern set forth on Map 65.
- **≠Program:** Local governments will consider developing neighborhood plans that include a planned street network plan to provide proper guidance to developers for connectivity of collector and land access streets between subdivisions.
- **∞Program:** Encourage and support businesses and agribusiness that use “green” development techniques and focus on renewable, alternative, or sustainable energy resources.
- **~Program:** Kenosha County will work with towns to update County shoreland zoning regulations to comply with pending updates to Chapter NR 115 of the *Wisconsin Administrative Code*.
- **∞Program:** Kenosha County and SEWRPC will continue to provide all inventory and additional planning maps produced for the multi-jurisdictional comprehensive planning process to local governments, on request, to facilitate joint land use planning.

Housing Element (Chapter X)

- **≠Program:** Kenosha County should study the feasibility of creating a countywide housing trust fund to provide a dedicated source of revenue to support the development and preservation of affordable housing.
- **≠Program:** Identify programs and potential funding sources for new programs to assist homeowners in creating more energy-efficient homes and in making needed repairs, including improvements to meet State and Federal lead-safe standards.
- **∞Program:** Continue cooperative efforts between the Kenosha County Health Department and local governments to enforce State public health Statutes, and County and local ordinances concerning dilapidated, unsafe, or unsanitary housing that pose a human health hazard.
- **∞Program:** Support and consider expanding the Kenosha County Housing Authority programs, including the Housing Rehabilitation Loan Program, the Homestead Opportunity Loan Program, and the Fox River Flood Mitigation Program.
- **≠Program:** Encourage local and county governments to incorporate Universal Design requirements into local zoning ordinances and building codes.
- **∞Program:** Continue to support and expand Kenosha County Division of Aging³ services and programs, which provide support services and information to elderly and physically disabled residents, and to their families.
- **∞Program:** Continue to support nonprofit agencies and Kenosha County’s Division of Aging Services “stay-at-home” services to assist elderly and disabled residents living in traditional homes. Aside from personal and home healthcare, services include adult day care, home modification, housekeeping, meal delivery, lawn care, and snow removal.

³ The Kenosha County Division of Aging Services, through the Aging and Disability Resource Center, provides information, programs, and services pertaining to transportation, healthcare services, elderly housing, meal programs, benefit services, financial assistance, recreation and education programs, and other services for the elderly and disabled.

Transportation Element (Chapter XI)

- **≠Program:** Kenosha County, in cooperation with local governments, SEWRPC, and State agencies, should prepare a Countywide transit plan, which would analyze and recommend fully coordinated transit improvements and connections within the County and equitable funding for transit services, in lieu of or as an interim measure until a permanent RTA is formed that would provide regional funding and management of transit services.
- **≠Program:** Prepare and implement City, Village, and Town neighborhood plans, small area plans, and bicycle and pedestrian plans to provide a coordinated system of bicycle and pedestrian trails, collector streets, and local land access streets.
- **≠Program:** Review the recommended transit service improvements set forth in the forthcoming Kenosha Area Transit System Development Plan 2009-2013 and subsequent updates and implement desired recommendations.
- **∞Program:** Continue operation of transportation services for persons with disabilities and elderly residents through operation of the Care-A-Van, Volunteer Escort, Discovery Bus, and similar programs through the comprehensive plan design year 2035.
- **~Program:** Develop and implement a detailed bike and pedestrian trail plan for Kenosha County under the guidance of an advisory committee to be formed by Kenosha County. The plan should determine specific locations for bike and pedestrian trails and identify potential links to existing trails in Kenosha County, trails in adjacent counties, and a potential east-west trail in the County.
- **≠Program:** Consider including facilities for walking and bicycling during the review and approval of all development projects, including street and highway improvements, to provide an alternative to motor vehicle travel and to promote a healthy lifestyle.
- **∞Program:** Continue working with SEWRPC and WisDOT to continue regional planning efforts and to develop methods to promote interconnection between all transportation modes and systems available within the County and the Region.
- **≠Program:** Work with SEWRPC, WisDOT, and local governments to comprehensively review and update the Kenosha County jurisdictional highway system plan and to implement its recommendations.
- **≠Program:** Consider preparing and adopting a highway access management ordinance to regulate access to County highways, and coordinate with local governments to develop consistency between County highway access management regulations and local access management/driveway ordinances.
- **∞Program:** Encourage the use of the design concept called “Complete Streets.”⁴
- **∞Program:** Continue to maintain existing County and local streets and highways, including resurfacing, reconstruction, and patching; snow clearing; sign maintenance; and mowing, trash removal, and tree trimming within highway rights-of-way.

⁴ “Complete Streets” are designed and operated to enable safe access for all users, including pedestrians, bicyclists, motorists, and transit riders of all ages and abilities. See www.completestreets.org for more information.

Utilities and Community Facilities Element (Chapter XII)

- **∞Program:** Continue the cooperative process among DNR, SEWRPC, and County and local governments for coordinated planning of land use, sewage treatment and disposal, stormwater management, and water supply facilities and services.
- **≠Program:** Continue to develop stormwater management plans and ordinances and joint agreements to provide centralized and/or shared stormwater management facilities, if cost savings and/or service level improvements would result.
- **∞Program:** Continue to implement recommendations from the Kenosha County Hazard Mitigation Plan to help protect County residents from natural and environmental hazards.
- **≠Program:** Consider the potential establishment of a County manure storage ordinance and a livestock siting ordinance, as authorized under Sections 92.15 and 92.16, respectively, of the *Wisconsin Statutes*.
- **≠Program:** Study the feasibility of providing permanent household hazardous waste drop-off sites in the County.
- **✓Program:** Work with pharmacies, medical centers, health care providers, hospice providers, and veterinarians in Kenosha County to develop a pharmaceutical collection program.
- **∞Program:** Continue local solid waste collection and disposal services and local recycling programs.
- **∞Program:** County and local governments should continue to work with State officials and agencies, private industry, and WE Energies to support projects that improve air quality.
- **∞Program:** Continue to provide public health, health care, and transportation programs and services offered by Kenosha County government departments and agencies, including the Aging and Disability Resource Center, Health Department, Children and Family Services, and the Veterans Service. The programs and services provided by Kenosha County agencies and departments should be assessed during the annual comprehensive plan review process.
- **∞Program:** Periodically assess local fire, police, and EMS services to determine if additional personnel, facilities, and equipment are needed to maintain an acceptable level of service.
- **∞Program:** Continue to provide dispatch services through the integrated County emergency call dispatch center, which is operated by the Kenosha City/County Joint Services-Communications Center and through local dispatch services.
- **∞Program:** Continue to prepare or initiate a Capital Improvements Program (CIP) in the County and in each local government to help identify major public projects, including land acquisition, equipment acquisition, transportation facility development and maintenance (including roadways and transit), building maintenance and development, and park projects; and funding sources to implement desired projects.
- **≠Program:** Cities, villages, and towns will initiate contacts with surrounding communities and the County prior to constructing new facilities or establishing or expanding community services to determine if there are opportunities for joint facilities and services.
- **≠Program:** Kenosha County will initiate contacts with local governments prior to constructing new facilities or establishing or expanding community services to determine if there are opportunities for joint facilities and services.

Economic Development Element (Chapter XIII)

- **∞Program:** Continue administration of the Kenosha County Revolving Loan Fund (RLF) to create employment opportunities, encourage private investment, and provide a means to finance new and expanding businesses, including small businesses, in the County.
- **∞Program:** Support the continued use of Community Development Block Grant – Economic Development (CDBG –ED) funds. The funds can be used for loans to businesses wishing to expand in Wisconsin or relocate to Wisconsin. The County is able to retain the funds to capitalize the Kenosha County RLF once they are repaid by the businesses.
- **≠Program:** Develop a method to market and link Kenosha County agricultural products, including organic products, to restaurants and stores in Kenosha County and surrounding areas.
- **∞Program:** Continue to support KABA in its efforts to develop and distribute educational materials regarding various funding and incentive opportunities available for businesses located in Kenosha County or wishing to relocate to the County, including Wisconsin Department of Commerce, WHEDA, and Federal financing programs inventoried in Part 2 of Chapter XIII and Appendix U.
- **∞Program:** Encourage and assist KABA to continue involvement and partnership with educational and training programs such as Gateway Technical College Associate’s Degree in Management.
- **∞Program:** Encourage and assist KABA’s Education Foundation in its efforts to develop education initiatives with local schools to improve the quality of education and increase the number of County residents completing post-high school education.
- **≠Program:** Establish an outreach program to potential employees, including high school students, college students, and their parents to match desired skills.
- **~Program:** Identify sustainable lands to be retained in long-term agricultural use in consultation with Kenosha County and local governments.
- **≠Program:** Develop telecommunications and technology strategies for the County to ensure access to wireless voice and data communications networks for County businesses and residents, including residents who telecommute or operate a home-based business.
- **∞Program:** Support KABA and the Milwaukee 7 in promoting Kenosha County to businesses considering expanding or relocating to Kenosha County from outside the Southeastern Wisconsin Region.
- **≠Program:** Develop an incentive program to attract businesses that utilize sustainable and environmentally-friendly economic development concepts such as the use of renewable energy sources; building and landscape designs that reduce the use of toxic chemicals, reduce the use of impervious building materials, and utilize other “green” development measures; and provide jobs that pay wages sufficient to meet the cost of living in Kenosha County.

Intergovernmental Cooperation Element (Chapter XIV)

- **≠Program:** Provide an arrangement for continuing dialog about land use planning and regulation issues and boundary issues among local governments, and between local governments and Kenosha County. The MJAC and Kenosha County Council of Governments are existing multi-jurisdictional groups that may provide the organizational setting for such discussions.
- **∞Program:** If requested by local governments, Kenosha County will provide technical assistance and

data to assist in the development of boundary agreements, subject to staff availability.

- **≠Program:** Consider the preparation of a multi-jurisdictional stormwater management plan, including counties and local governments adjacent to Kenosha County within the same watershed.
- **∞Program:** Continue working with SEWRPC to prepare new and updated elements of the regional plan, such as the regional transportation, water quality, water supply, natural areas, and telecommunications plans and the County jurisdictional highway system plan.
- **∞Program:** Continue to involve local governments when County land use-related plans or ordinances or plans for developing or delivering County facilities or services are prepared or comprehensively updated.
- **∞Program:** Work with school districts and/or adjacent communities in the district, on request, to assess the impact of proposed new subdivisions on district facilities. Consider inviting school district officials to County and local meetings when new development projects will be discussed, and provide copies of meeting agendas to enhance communications.

Zoning Ordinances

Consistency Between the Multi-Jurisdictional Comprehensive Plan and County Ordinances

Section 66.1001 (3) of the Statutes requires that the following ordinances be consistent with a unit of Government's comprehensive plan by January 1, 2010:

- Official mapping established or amended under Section 62.23 (6) of the Statutes.
- County or local subdivision regulations under Section 236.45 or 236.46 of the Statutes.
- County zoning ordinances enacted or amended under Section 59.69 of the Statutes.
- City or village zoning ordinances enacted or amended under Section 62.23 (7) of the Statutes.
- Town zoning ordinances enacted or amended under Section 60.61 or 60.62 of the Statutes.
- Zoning of shorelands or wetlands in shorelands under Section 59.692 (for counties), 61.351 (for villages), or 62.231 (for cities) of the Statutes.

At the time of this annual report, Kenosha County's ordinances mentioned above are consistent with the multi-jurisdictional comprehensive plan. Consideration will also be given to the following potential changes to the County zoning ordinance, which have been identified in Town land use and comprehensive plans:

- **≠Program:** The addition of "open space" suburban cluster subdivision options in the R-2 and R-3 Districts to foster and accommodate "open space" suburban cluster subdivisions served by public sanitary sewer service and which would be located within approved sanitary sewer service areas.
- **≠Program:** Site plan review for uses proposed in residential zoning districts.
- **~Program:** The addition of landscaping standards and bufferyard requirements.
- **~Program:** A review and possible update of sign regulations.
- **~Program:** A review and possible update of parking regulations.

UPDATED INVENTORY DATA

There have been two major inventory data updates that have been incorporated into the multi-jurisdictional comprehensive plan between May 21, 2011 and May 21, 2012. Those include: the adoption of the update to the *Kenosha County Park and Open Space Plan* adopted by Kenosha County on April 17, 2012 and the adoption of the new Flood Insurance Rate Maps (FIRMS) and the new Flood Insurance Study (FIS) with corresponding statutory language adopted by Kenosha County on June 19, 2012.

PROPOSED PLAN TEXT AMENDMENTS

The following are proposed Kenosha County sponsored text amendments to be made to the Kenosha County multi-jurisdictional comprehensive plan (*A Multi-Jurisdictional Comprehensive Plan for Kenosha County: 2035*) as part of this annual report process:

Add to Part 2 of Chapter XV – Implementation Element:

Exceptions for Amendments to the Multi-Jurisdictional Comprehensive Plan

The following actions are not considered amendments to the multi-jurisdictional plan, and will not require review and approval by the Planning, Development & Extension Education Committee and County Board.

- *Rezoning actions back to the original zoning for developments that were not constructed. Provided that no land division action (e.g. certified survey map, subdivision plat or condominium plat) is taking place.*

Add Appendix X:

The addition of Appendix X – Multi-Jurisdictional Comprehensive Plan Amendments (see attached), which will be updated annually as part of the annual report process to include all approved land use plan map and text amendments to the multi-jurisdictional comprehensive plan as included in the annual report.

SUMMARY

In the second year of implementation, Kenosha County staff has continued to work on some significant programs as recommended the multi-jurisdictional comprehensive plan. These programs include completing an update of Kenosha County's farmland protection plan and an update to the park and open space plan. Staff has also, as recommended in the plan, updated floodplain mapping from the Kenosha County floodplain map modernization project into the County's zoning maps. Furthermore, Staff has completed a bicycle planning consultant selection process resulting in a contract with Alta Planning and Design partnered with the Wisconsin Bike Federation to write the comprehensive bicycle plan for Kenosha County. The bicycle planning process will be overseen by the County Executive Jim Kreuser's Blue Ribbon Committee on Bicycle Planning and Development.

Between May 21, 2011 and May 21, 2012 the adopted land use plan map for Kenosha County had 19 amendments. This included nine amendments within the City of Kenosha, four amendments within the Village of Pleasant Prairie, and six amendments within the unincorporated areas of Kenosha County (Towns of Brighton, Paris, Salem, Randall, and Wheatland). In addition, there are six Kenosha County sponsored map amendments being made as part of this annual report.

Summary of Recommended Programs and Priorities

Below is a summary of completed, continuous, in-progress, not addressed, and discontinued programs related to the *Kenosha County multi-jurisdictional comprehensive plan* conducted by Kenosha County staff during the period of May 21, 2011 – May 21, 2012.

	Completed ✓	Continuous ∞	In-Progress ~	Not Addressed ≠	Discontinued Ø
Agricultural, Natural, & Cultural Resources Element (27)	2 (7.4%)	16 (59.3%)	5 (18. %)	4 (14.8%)	0 (0.0%)
Land Use Element (10)	0 (0.0%)	6 (60.0%)	1 (10.0%)	3 (30.0%)	0 (0.0%)
Housing Element (7)	0 (0.0%)	4 (57.1%)	0 (0.0%)	3 (42.9%)	0 (0.0%)
Transportation Element (11)	0 (0.0%)	4 (36.4%)	1 (0.9%)	6 (54.5%)	0 (0.0%)
Utilities and Community Facilities Element (14)	1 (7.1%)	8 (57.1%)	0 (0.0%)	5 (35.7%)	0 (0.0%)
Economic Development Element (11)	0 (0.0%)	6 (54.5%)	1 (9.1%)	4 (36.4%)	0 (0.0%)
Intergovernmental Cooperation Element (6)	0 (0.0%)	4 (66.7%)	0 (0.0%)	2 (33.3%)	0 (0.0%)
Zoning Changes (5)	0 (0.0%)	0 (0.0%)	3 (60.0%)	2 (40.0%)	0 (0%)
TOTAL: (91)	3 (3.4%)	48 (53.9%)	11 (12.4%)	27 (30.3%)	0 (0.0%)

All other programs recommended in the multi-jurisdictional comprehensive plan that are not included in this annual report are considered on-going programs that should continue to be carried out throughout the life of the plan.

Summary of Updated Inventory Data

There are two major inventory data updates that are being incorporated into the multi-jurisdictional comprehensive plan between May 21, 2011 and May 21, 2012. Those include: the adoption of the update to the *Kenosha County Park and Open Space Plan* adopted by Kenosha County on April 17, 2012 and the adoption of the new Flood Insurance Rate Maps (FIRMS) and the new Flood Insurance Study (FIS) with corresponding statutory language changes to the Kenosha County General Zoning and Shoreland / Floodplain Zoning Ordinance adopted by Kenosha County on June 19, 2012.