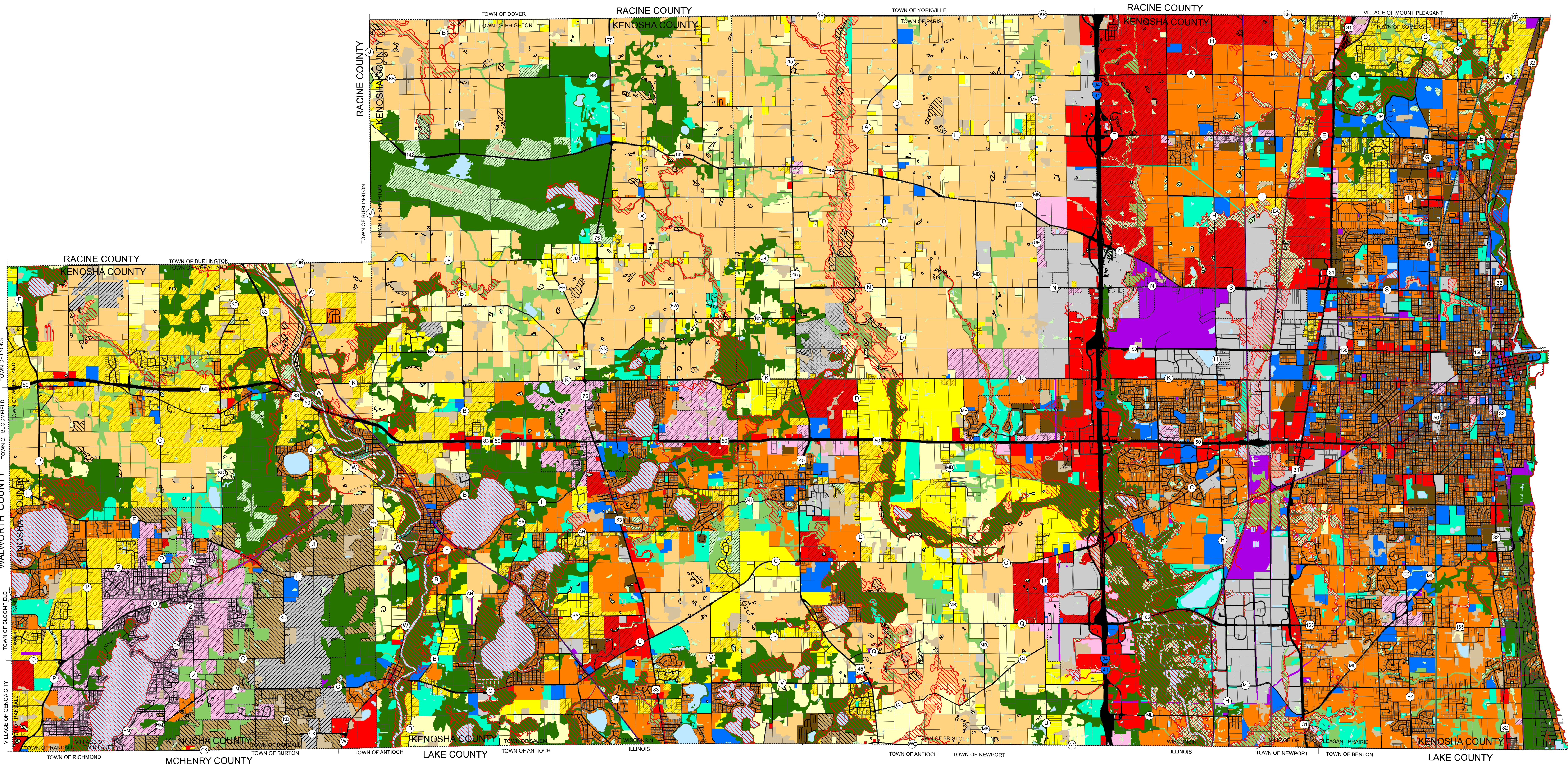


MAP 65
ADOPTED LAND USE PLAN MAP FOR KENOSHA COUNTY: 2035



- | | | |
|--|--|--|
| Farmland Protection | Commercial | Extractive |
| General Agricultural and Open Land | Office/Professional Services | Landfill |
| Rural-Density Residential | Industrial | Primary Environmental Corridor |
| Agricultural and Rural-Density Residential | Business/Industrial Park | Secondary Environmental Corridor |
| Suburban-Density Residential | Governmental and Institutional | Isolated Natural Resource Area |
| Medium-Density Residential | Park and Recreational | Other Conservancy Land to be Preserved |
| High-Density Residential | Street and Highway Right-of-Way | Nonfarmed Wetland |
| Mixed Use | Transportation - Communication - Utility | Surface Water |

- | |
|-------------------------------|
| Farmed Wetland (Overlay) |
| 100-Year Floodplain (Overlay) |

0 0.5 1 2 3 4 Miles
1 Inch = 3500 Feet
Map Current To: January 2019
Source: Wisconsin Department of Natural Resources, Federal Emergency Management Agency, Local Governments, Kenosha County and SEWRPC

