



# Ties to the Land



## Your Resource Partners in Kenosha and Racine Counties:

Racine County Land Conservation Division  
University of Wisconsin Extension

Farm Service Agency Office

Kenosha County Land & Water Conservation  
Natural Resources Conservation Service

Quarterly Newsletter – 2<sup>nd</sup> Quarter

## TABLE OF CONTENTS

### Farm Service Agency

DCP Sign-Up Reminder.....	1-2
Conservation Compliance.....	2
MILCX Contracts.....	2
Fruit and Vegetable Planting.....	2
DCP Enrollment On-line.....	2
CRP Expiring Contracts.....	3
Wool and Mohair Loans and LDPs.....	3
USDA Resale Website.....	3
FSA County Committee Minority Advisors.....	3
Storage Facility Loans.....	3

### Kenosha County Land Conservation

Master Woodland Steward Program.....	4
--------------------------------------	---

### Natural Resources Conservation Service

Protect Your Program Eligibility.....	5
---------------------------------------	---

### Racine County Land Conservation

County Conservationist Retirement.....	6
Wildlife Damage Program.....	6
Tree Pick Up.....	6
Nutrient Management Sign-up.....	6

### Kenosha/Racine UW Extension

Commercial Versus Private Pesticide Applicators..	7
---	---



## Racine Kenosha County FSA Office

**1012 Vine Street**

**Union Grove WI 53182 1330**

**Telephone 262-878-3353 X 2**

## A Message from Kimberly Iczkowski, County Executive Director

Again, welcome to “Ties to the Land”, a newsletter, created by the agencies of FSA, UW Extension, NRCS, and Land Conservation in the counties of Racine and Kenosha.

Please note you also receive a newsletter that is printed for the entire state which has generic information for you. In the “Ties to the Land” newsletter, we always try to keep the message personal and up-to-date.

Please take the time to review this newsletter and the information gathered for you.

## 2007 DCP SIGNUP DEADLINE REMINDER

Sign up for the 2007 Direct and Counter-Cyclical Program (DCP) is ongoing right now. A new DCP contract needs to be signed every year for each farm in order to receive DCP payments. To sign up you will need to provide the following information:

- What land you will be operating for 2007. For leased land, leases signed by the landowner must be on file prior to the office issuing a 2007 advance payment.
- Whether you have changed the status of your operation. For example, if you have changed your operation from an individual to a partnership, LLC, trust etc.
- Contract payment shares have changed.
- If you have bought or sold land, or if you are renting new land, please notify your local office as

soon as possible so your records can be updated prior to enrolling the farm.

Remember it is always important to call the office **prior to your visit to make an appointment** so that all forms, folders, etc. can be pulled and be ready for your visit.

## CONSERVATION COMPLIANCE – CAN I PLANT CORN?

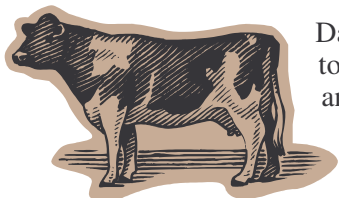
Times are changing and ethanol is gaining in popularity. This may affect your decision on how much corn to plant this year.



Please remember that all participants in USDA programs are required to have a conservation system in place on all the highly erodible land (HEL) that they operate. Several areas where problems can arise when complying with a conservation system are; renting new cropland, purchasing new land, breaking out additional cropland, draining or tiling new land, not following a crop rotation, and changing, or removing existing conservation practices.

It is very important that you contact the FSA and/or NRCS office before doing any of the above or modifying - tiling, draining, dredging, filling, or leveling, any wetland or drainage ditch. Failure to obtain advance approval for any of these situations can result in loss of all Federal payments and eligibility.

## KEEP YOUR MILCX CONTRACT UP TO DATE



Dairy operations are reminded to inform the county office of any entity or operation changes that may affect your Milk Income Loss Contract (MILCX). The change from

an individual to a corporation or partnership, etc. would require an update to your MILCX and other applicable eligibility forms.

As of the date of writing this newsletter there will be no payments made on your March or April Milk production. It is still important to keep everything up-to-date in the office here so if and when payments are authorized again getting all records updated will be much easier.

## DEADLINES FOR LOANS

Please note that the final date to request a commodity loan on 2006 corn or soybeans is May 31, 2007.

## FRUIT & VEGETABLE PLANTING REMINDER

Planting fruits or vegetables (FAV) on acreage under contract in the Direct and Counter-Cyclical Program (DCP) may adversely affect your program benefits. If you are going to plant any vegetable or fruit crops this year, it is very important that you check with your FSA office **before** planting to ensure that you do not jeopardize your payment eligibility.

Failure to follow the rules with FAV plantings on contract acres will be a contract violation resulting in payment reductions or termination of the DCP contract on the farm.

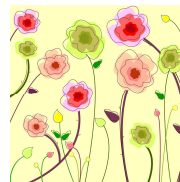
Play it safe and contact your county office before you plant or lease land for fruit or vegetable production in 2007.

## REPORT CHANGES TO FSA

If there are changes in the land you own or operate, changes in your address, your bank account (for direct deposit), or any changes in the structure of your operation, it is very important that you report these changes to the FSA office immediately. Special emphasis needs to be placed on the requirement to report to your local FSA office any changes as a result of the creation of trusts, LLCs, partnerships or other entity. The change of land ownership or contract shares from an individual to one of the above mentioned entities, could impact your eligibility and other contract requirements. Contact your FSA office for additional details.

## 2007 DCP ENROLLMENT AVAILABLE ONLINE

DCP Enrollment online (E-DCP) allows you to choose 2007 DCP payment options, assign crop shares, and sign and submit your contracts electronically from any computer with Internet access. You no longer have to visit the USDA Service Center to complete these tasks and can view and print out submitted contract options at any time. However, if cash leases or other eligibility forms are needed, an office visit would still be required. This voluntary service is available to all producers who are eligible to participate in DCP and who have obtained an eAuthentication account. The electronic service is at [http://www.fsa.usda.gov/egov/edcp\\_default.htm](http://www.fsa.usda.gov/egov/edcp_default.htm).



## CRP CONTRACTS EXPIRING IN 2007 BE AWARE

Conservation Reserve Program (CRP) participants with 2007 expiring contracts need to remember that these contracts **don't expire until September 30, 2007**. This means that all provisions and conservation and maintenance requirements of the CRP contract must be complied with through September 30<sup>th</sup>. If you are unsure of your contract requirements, please contact your local FSA office for additional details.

## WOOL & MOHAIR LOANS OR LOAN DEFICIENCY PAYMENTS (LDPS)

Wool and mohair producers are reminded to apply for commodity loans and loan deficiency payments for their 2007 wool, mohair, and unshorn pelts.

Producers should complete page one of the CCC-633 EZ form as soon as possible for their current crop year wool, mohair, and unshorn pelts before losing beneficial interest in the commodity. By completing page one of the CCC-633 EZ form the producer indicates their intention to receive LDP benefits later on. After page one is completed, producers can request benefits at any time during the period that loans or LDPS are available, before or after losing beneficial interest. For 2007, the LDP and loan deadline is January 31, 2008.

## USDA RESALES WEBSITE

Did you know that USDA has a website which provides government owned real estate and potential foreclosure sales for farm/ranch properties, houses, lots, and building to:

⇒ Community organizations working for and with small, limited resource, and underserved individuals, groups and communities including under-represented female farmers, ranchers and landowners.

⇒ Media sources/contacts targeting small, limited resource, and underserved individuals, groups and communities, including under-represented female farmers, ranchers, and landowners.

⇒ All eligible producers; as required by 1943-A, 1943.13.

⇒ Go to: <http://www.resales.usda.gov> to find out more.

## FSA County Committee Minority Advisors

The Farm Service Agency is an agency of the United States Department of Agriculture that administers federal farm programs. In Wisconsin a County Committee carries out these programs. Each County Committee consists of between three and five members,

elected by fellow farmers.

In addition each committee may have a COC Advisor. The advisor's responsibilities are to serve as a representative of under-served communities in the county and ensure that their interests are fairly represented. This is a paid for position including credit for the time that the County Committee meets, as well as paid mileage. The meeting usually amounts to three or four hours per month. Meetings are held on the second Thursday of the month from 9:00 a.m. – noon.

You must be a land owner or operator in Racine or Kenosha County to be eligible to serve as a minority advisor.

Please call the FSA Office at 262-878-3353 x 2 if you would be interested in serving as an advisor or would like more information about the position.

## Storage Facility Loans

Because of the improved market conditions farmers are thinking more about building on farm storage and/or dryer structures. The Storage Facility Loan Program's objective is to provide low cost financing to producers interested in building or upgrading their commodity storage. Below are some of the highlights, but it is so very important to contact the FSA Office for details that could affect your eligibility.



**Eligible Structures** – New Cribs or Bins, New or Remanufactured Oxygen Limiting Structures, Upright Bunker Type or Open Silo Structures, Commodity Handling and Drying Equipment, Renovation of Existing Structures to Increase Storage, Certain Flat Storage Structures, Electrical Equipment & Site Preparation.

**Ineligible Structures** – Portable Equipment, Used Structures, Structures with Useful Life Less Than 10 years, Feed Handling or Processing Equipment, Hay Storage, Commercial Storage.

**Loan Details** – \*Fixed Interest Rate, \*7 Annual Installments, \*Maximum Loan limited by Storage Needs, and is 85% of Net Construction Cost and no more than \$100,000 per person.

**Security** – Loans less than \$50,000.00 Structure is security. Loans more than \$50,000.00 REQUIRE a real estate Mortgage or Letter of Credit.

It is very important that the request for the loan be made to the FSA Office along with a \$45.00 service fee PRIOR to any equipment, grading or leveling is started.





DAN TRELOAR - CONSERVATION PLANNER  
KENOSHA COUNTY DEVELOPMENT DIVISION  
19600 - 75TH ST. BRISTOL, WI 53104  
(262) 857-1895 FAX (262) 857-6508  
Email: dtreloar@co.kenosha.wi.us

I would like to invite you to become a  
Master Woodland Steward...

The Master Woodland Steward Program is designed to teach woodland owners the basics about forest ecosystems, silviculture, and economics to help you become a more effective steward of your woodland property ...and how to share this knowledge with your neighbors...



The goals of the Master Woodland Steward programs are to:

- 🌲 Provide information and educate private forest landowners on forest processes and the basics of sustainable forest management practices.
- 🌲 Provide information and educate private forest landowners about professional technical assistance and cost-share options that are available to help develop stewardship plans to implement practices.
- 🌲 Reach a greater number of Wisconsin's 290,000 private woodland owners through the activities of the program's graduated as they pass on what they have learned to their communities, neighbors and peers about forest ecosystems and sustainable forest management practices.

The Master Woodland Steward Program will be offered at the Seno Woodland Education Center as a series of all day Saturday seminars. The Seno Woodland Education Center is located at 3606 Dyer Lake Road. 1.5 miles north of highway 50 on County highway P. The Seno Center is 5 miles south of Burlington and 7 miles North and East of Lake Geneva and 15 miles west of Kenosha. You can sign up to participate in the entire program or only those seminars that are of interest to you. Space is limited and preference will be given to those interested in becoming Master Woodland Stewards.

## MASTER WOODLAND STEWARD PROGRAM SCHEDULE

**Seminar #1 – Forest Ecology and Silviculture – Saturday, April 14th, 2007;** 9:00 am- 3:30 pm. This seminar will introduce you to basic concepts of forest ecology and silviculture and how they are applied on the landscape.

**Seminar #2 – Tree Identification and Forest Measurements – Saturday, May 12th, 2007;** 9:00 am – 3:30 pm. This seminar will provide you with some of the basic skills and tools that you will need to perform an inventory of your woods and establish permanent re-measurement plots that can help you understand your woodlands.

**Seminar #3 – Wildlife Habitat Management – Saturday, June 16th, 2007;** 9:00am- 3:30 pm. This seminar will provide you with a deeper understanding and appreciation of habitat and help you learn to identify what animals are present on your land and how to attract others.

**Seminar #4 – The Careful Timber Harvest – Saturday, July 14th, 2007;** 9:00 am – 3:30pm. This seminar will help you to understand the steps in the process necessary to have a carefully considered and well-planned timber harvest.

**Seminar #5 – Recreation, Aesthetics and Specialty Forest Products – Saturday, August 11th, 2007;** 9:00 am – 3:30 pm. This seminar will help you to understand some to the additional benefits that you can derive from managing for recreation, aesthetics and specialty forest products.

**Seminar #6 – Financial and Estate Planning – Saturday, September 8th, 2007;** 9:00 am – 3:30 pm. This seminar will help you to understand the laws that apply to the expenses and income related to your management activities as well as the programs that are available to help you minimize those expenses and reduce your tax burden.

You can sign up for the entire program or individual seminars. Cost for the programs is \$100 if you sign up for all six seminars at the same time, or \$20 for each individual seminar. Contact Kendra Johncock at 262-539-3222 or email [senocenter@senocenter.org](mailto:senocenter@senocenter.org) for a brochure.



## KENOSHA COUNTY TREE PICK-UP

If you ordered trees this year, a receipt will be sent to your home indicating which day of April the 26<sup>th</sup> or 27<sup>th</sup>, based on your order number, you can pick up your trees. If you have any questions about the program, call our office at 262-857-1895



Jerry Hebard, District Conservationist  
phone: (262) 878-1243 ext. 108  
e-mail: [jerry.hebard@wi.usda.gov](mailto:jerry.hebard@wi.usda.gov)

## **PROTECT YOUR PROGRAM** **ELIGIBILITY**

Remember Conservation when making planting decisions. Don't forget to check your conservation plan before making final planting decisions this spring. Always review your conservation plan before changing a crop rotation or leaving less crop residue if you have fields that have been designated as Highly Erodible Land (HEL) or if you may need a conservation plan for other state programs.

With high corn prices, some farmers are changing crop rotations to plan more corn. Increased tillage, additional fertilizer, and planting odd corners and field borders may increase production in the short term, however, the benefits of rotating crops may be lost when corn is planted year after year. Those benefits include soil conservation, nitrogen credits from legumes or soybeans, and reduced need for pesticides. Even with best management practices for erosion control, nutrient and pest management, a serious risk of increased sediment and chemical residues in water exists with continuous corn production.

The most common way farmers get out of compliance with USDA on HEL fields, is by dropping their planned conservation system and adding a year or more of a tilled crop, such as corn, that potentially may increase soil erosion.

Remember, conservation compliance that began with the 1985 Farm Bill, is still in effect. This means farmers need to control erosion on HEL fields in order to stay eligible for USDA program benefits. And those benefits are substantial, because they include the Farm Loan programs and Disaster Assistance in addition to commodity price support programs available through USDA.



Greater than 30 per cent residue reduces erosion

Anyone who plans to participate in USDA programs now or in the future should check with NRCS before they stray too far from the crop rotation shown in their conservation plans. USDA program participants are responsible for ensuring that their conservation plan or system is applied and maintained in order to remain eligible for USDA benefits. Contacting the NRCS office in Union Grove to review your current plan and discuss possible options.

Farmers also need to be alert to ephemeral erosion in order to maintain program eligibility. Ephemeral erosion refers to the channels and gullies, from a few inches up to several feet wide that form in tilled fields after rains. Control of ephemeral erosion is also a farm bill requirement.

USDA offers cost-sharing to help farmers with the conservation practices necessary to remain eligible for USDA benefits. The Environmental Quality Incentive Program (EQIP) offers cost sharing for waterways, buffers, and other cropland conservation practices.

Contact the NRCS office at 1012 Vine Street in Union Grove if you have questions about the status of your conservation compliance plan, conservation practices, or any of the USDA conservation programs or check at [www.wi.nrcs.usda.gov](http://www.wi.nrcs.usda.gov).



## County Conservationist -Retirement-

Article submitted by: Chuck Seeger

By the time you read this latest “Ties to the Land” newsletter, I will be retired from Racine County and will be starting a new chapter in my life. As the first Racine County Land Conservationist, it has been a pleasure working with so many rural landowners, agricultural producers and governmental agency partners.

I’ve witnessed many changes in the farming community over these past 33 years. Breakthroughs in technology now allows much more crop residue on the surface of the land, thereby keeping the soil on the fields and preventing runoff into the road ditches, streams and lakes. This has resulted in saving 1000’s of tons of soil from leaving your fields. I commend all of those who are taking a role in conserving this black gold (topsoil).

One of the accomplishments in which I take great pride is the county’s annual tree and shrub seedling program created back in the early 1980’s. This year marks the 24<sup>th</sup> year of providing landowners throughout southeastern Wisconsin and northern Illinois with an opportunity to purchase trees for planting at a very low cost. As I’ve driven along our county roads, I’ve enjoyed seeing the tiny seedlings grow into beautiful, large, healthy trees, witnessing firsthand the success of this program. I take great pride in knowing that for every tree planted, in some small way, we have helped in saving soil and producing cleaner air for the benefit of everyone.

I leave you with this final reflection. As we journey through life and have been given the opportunity to be stewards of this wonderful earth, let us remember that we should always strive to do our very best in leaving that which the Lord has given us in a better condition than when we started.

## Wildlife Damage Program

The Wisconsin Wildlife Damage, Abatement and Claims Program (WDACP) is available for Racine County residents.

The counties are contracted with USDA-APHIS – Wildlife Services to provide program assistance.



If you have crop damage due to deer, geese, or turkeys, then contact USDA-APHIS – Wildlife Service at **1-800-433-0663**. **All crop damage must be reported within 14 days of the first damage each year.**

## Racine County Tree Pick-up at the County Fairgrounds in Union Grove



If you ordered trees this year, a receipt will be sent to your home indicating which day in April you can pick up your trees. The anticipated days for tree pick-up are April 19<sup>th</sup> and 20<sup>th</sup>. If you have any questions about the program, please call 262-886-8479.

## Nutrient Management Sign-up for 2008

Unfortunately, manure spills and manure runoff events occur every year. Over application and untimely applications of manure can lead to fish kills or contamination of ground water. The State of Wisconsin has taken a large step toward protecting it’s water resources through nutrient management planning. Each county will be eligible to provide cost-share to farm operations requesting soil tests and nutrient management plans. The cost-share rate is \$28/Acre and paid over a period of 4 years. If you are interested in nutrient management, please contact our office at 262-886-8479 with your name, address, acres for soil testing. We will include your information in the Wisconsin Department of Agriculture Grant Application for funding. Funding is NOT guaranteed, but may be available in 2008 beyond.





Cooperative Extension · University of  
Wisconsin-Extension  
Kenosha & Racine Counties

Kenosha County  
PO Box 550  
Bristol, WI 53104  
262-857-1945

Racine County  
14200 Washington Avenue  
Sturtevant, WI 53177  
262-886-8460

*Article Submitted by:*

*Art Fonk, DATCP Environmental Enforcement  
Specialist, 262-884-3793 art.fonk@datcp.state.wi.us.*

## WHEN DOES A FARMER BECOME A COMMERCIAL PESTICIDE APPLICATOR FOR HIRE?

One of the hot topics that I have come across in my travels in Kenosha and Racine counties is farmers who cross the line from “helping their neighbors” to becoming a commercial pesticide application business. I will attempt to describe what defines a commercial pesticide applicator and what the major requirements for commercial applicators are in this article. Please refer to ATCP 29 and 33 for a complete explanation of the rules. If you have any questions or would like more information feel free to contact me at 262-884-3793.

ATCP 29 is the rule that regulates the use of pesticides. ATCP 29 defines a commercial applicator for hire as using or directing the use of a pesticide for more than 3 agricultural producers, (regardless of acres sprayed) in one calendar year **OR** using or directing the use of a pesticide for a total of 500 acres in one calendar year. If you spray the same acre 3 times, it is then counted as 3 acres. Once an individual crosses one of these thresholds he or she is no different than the local co-op or dealer. In order to be in compliance with the major regulations of ATCP 29 you will need to do the following.

1. Become certified in the appropriate category.
2. Get licensed as a commercial applicator for hire.
3. Obtain a Commercial Pesticide Business Location license.
4. Keep the appropriate records for your commercial pesticide applications.
5. Provide your customers with post application information.
6. Post the appropriate pesticide applications with the necessary warning signs.
7. Be in compliance with the WPS standard.

Please refer to ATCP 29 for complete explanation of the requirements.

If you apply bulk products (pesticides or fertilizer) to acres you do not control, you will need to be in compliance with containment requirements in ATCP 29 and the Bulk Storage Rule, ATCP 33. This also applies

to distribution of bulk products (pesticides or fertilizers). Distribution includes storing 28% in one tank for use by 2 different producers. A liquid bulk fertilizer or pesticide is defined as a fertilizer or pesticide originating in a container 55 gallons or greater. The following is a brief explanation of some of those requirements.

1. You are required to have a mix load pad if you mix or load pesticides within 100 feet of a well. A mix load pad is also required if you mix or load more than 1500 #'s of active ingredient pesticide at one location or locations within ½ mile of each other, unless you are mixing or loading immediately adjacent to the intended field of application. A mix load pad is also required if bulk pesticide is not mixed adjacent to the field of application. See ATCP 29 or ATCP 33

2. You are required to have secondary containment for **any** liquid bulk pesticides distributed or applied to acres you do not control (including rinsate generated from liquid bulk pesticide).

A bulk pesticide is any liquid pesticide originating in a container over 55 gallons. See ATCP 33.

3. If you store liquid bulk fertilizer for distribution or application to acres you do not control you are required to have secondary containment and a mix load pad for that bulk fertilizer, as well as for all other bulk fertilizer and bulk pesticide stored at the same location. There are specific requirements in ATCP 33 for the size and structure of the containment.


4. If you store bulk product for distribution at your facility, all bulk containers, including minibulk containers, are required to be stored within secondary containment at all times they are located at your storage facility, except that mobile containers (containers anchored to the transport vehicle) may be stored outside of secondary containment if the facility is equipped with a compliant mix/load pad (the mobile container does not have to be parked on the pad). If you have a mix load pad you are allowed to have the mobile container anchored to the transport vehicle for 7 days without containment.

Regardless of whether you are a commercial pesticide applicator or a private applicator, on your own property you are required to:

- Have backflow protection to your water supply.
- Have a mix load pad if you mix and load pesticides within 100 feet of a well or surface water.
- Mix and load over 1500 #'s of active ingredient pesticide at one location or locations within ½ mile of each other, unless you are mixing or loading immediately adjacent to the intended field.

This is a brief overview of what is required for a “Commercial Pesticide Applicator”. To find all the requirements please refer to ATCP 29 or ATCP 33.

## DIRECTORY OF AGENCIES

**Racine/Kenosha Farm Service Agency (FSA)**   
1012 Vine Street, Union Grove, WI 53182 1330  
Phone: 262-878-3353, Ext 2 Fax: 262-878-3283

**Natural Resources Conservation Service (NRCS)**  
1012 Vine Street, Union Grove, WI 53182 1330  
Phone: 262-878-1243, Ext 3 Fax: 262-878-3283

**Racine County Land Conservation Division**  
14200 Washington Avenue, Sturtevant, WI 53177  
Phone: 262-886-8479, Fax: 262-886-8488

**Kenosha County Land & Water Conservation**  
19600 75<sup>th</sup> St, PO Box 520, Bristol, WI 53104  
Phone: 262-857-1895, Fax: 262-857-6508

**Kenosha County UW-Extension**  
19600 75<sup>th</sup> St, PO Box 550, Bristol, WI 53104  
Phone: 262-857-1945, Fax: 262-857-1998



**Racine County UW-Extension**  
14200 Washington Avenue, Sturtevant, WI 53177  
Phone: 262-886-8460, Fax: 262-886-8489

## CALENDAR OF EVENTS

**Thursday and Friday, April 19 and 20<sup>th</sup>:**  
**Racine County Tree Program Pick Up,**  
Racine County Fairgrounds, Union Grove

**Thursday and Friday, April 26 and 27<sup>th</sup>:**  
**Kenosha County Tree Program Pick-up,**  
Kenosha County Center, 19600 75<sup>th</sup> Street,  
Bristol

**Monday May 28<sup>th</sup>: Memorial Day,** All  
offices closed

**June 18 – 22<sup>nd</sup> and June 25<sup>th</sup>: Youth**  
**Tractor Safety Course,** Burlington High  
School, 8am – noon

**Wednesday, July 4<sup>th</sup>: Independence Day:**  
All Offices Closed

The U.S. Department of Agriculture (USDA) prohibits discrimination in all its programs and activities on the basis of race, color, national origin, sex, religion, age, disability, political beliefs, sexual orientation, or marital or family status. (Not all prohibited bases apply to all programs.) Persons with disabilities who require alternative means for communication of program information (Braille, large print, audiotape, etc.) should contact USDA's TARGET Center at (202) 720-2600 (Voice and TDD).

To file a complaint of discrimination, write USDA, Director, Office of Civil Rights, Room 326-W, Whitten Building, 1400 Independence Ave. SW, Washington, D.C. 20250-9410 or call (202) 720-5964 (voice and TDD). USDA is an equal opportunity provider and employer.

**Ties to the Land Newsletter**

**Your Resource Partners:**  
Farm Service Agency  
Natural Resources Conservation Service  
Racine County Land Conservation  
Kenosha County Land and Water Conservation  
UW-Cooperative Extension

**TIES TO THE LAND NEWSLETTER**  
Kenosha/Racine Farm Service Agency  
US Department of Agriculture  
1012 Vine Street  
Union Grove, WI 53182 1330