

# Ties to the Land Newsletter

April-June 2011



## TABLE OF CONTENTS

<b>Farm Service Agency</b>	
CRP Sign Up	1
2009 SURE Sign Up	2
E-Newsletter	2
Youth Loans	2/3
DCP and ACRE Sign Up Deadlines	3
<b>Kenosha County Land Conservation</b>	
Farmland Preservation Tax Credits	4
<b>Natural Resources Conservation Service</b>	
Compliance for Program Eligibility	5
<b>Racine County Land Conservation</b>	
Tree and Shrub Pick Up Information	6
Gypsy Moth Caterpillars	6
Poster Contest	6
Residential Wind Energy Facilities	6
<b>UW Cooperative Extension</b>	
Custom Rate Information	7
Horse Workshop	7



**Racine/Kenosha/Milwaukee  
FSA Office**  
1012 Vine St.  
Union Grove, WI 53182  
262-878-3353

### CRP GENERAL SIGNUP COMING

A general signup for the FSA's Conservation Reserve Program (CRP) will begin on **March 14, 2011, and continue through April 15, 2011.** During the signup period, farmers and ranchers may offer eligible land for CRP's competitive general signup at their county Farm Service Agency (FSA) office.

Land currently not enrolled in CRP may be offered in this signup provided all eligibility requirements are met. Additionally, current CRP participants with contracts expiring this fall may make new contract offers. Contracts awarded under this signup are scheduled to become effective October 1, 2011.

FSA, which administers the CRP, will evaluate and rank eligible CRP offers using an Environmental Benefits Index (EBI) that shows the environmental benefits to be gained from enrolling the land in CRP. The EBI consists of five environmental factors (wildlife, water, soil, air and enduring benefits) and cost. Decisions on the EBI cutoff will be made after the sign-up ends and after analyzing the EBI data of all the offers.

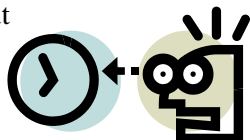
In addition to the general sign-up, CRP's continuous sign-up program will be ongoing. For more information, visit

<http://www.fsa.usda.gov/crp> or contact Jeanette at the FSA office at extension 100.

## 2009 SURE SIGNUP UNDERWAY

Producers are reminded that the sign-up period for the 2009 crop year Supplemental Revenue Assistance Payments (SURE) program began on January 10, 2011. SURE provides assistance to farmers and ranchers who have suffered losses due to natural disasters.

Producers who suffered losses during the 2009 crop year are encouraged to visit their local FSA office to learn more about the **SURE program as the sign-up deadline is July 29, 2011.**



To be eligible for SURE a farm must have:

- At least a **10 percent production** loss adjusted for quality on a **crop of economic significance**;
- A **policy or plan of insurance** under the Federal Crop Insurance Act or the Noninsured Crop Disaster Assistance Program (NAP) for all economically significant crops;
- **Been physically located in a county that was declared a primary disaster county or contiguous county** by the Agriculture Secretary under a Secretarial Disaster Designation. Without a Secretarial Disaster Designation, individual producers may be eligible if the actual production on the farm is less than 50 percent of the normal production on the farm due to a natural disaster.

In Wisconsin, all counties **except** the following were determined primary or contiguous for 2009:

Columbia	Dane
Dodge	Fond du Lac
Green Lake	Jefferson
Marquette	Milwaukee
Ozaukee	Racine
Sauk	Washington
Waukesha	

Producers considered socially disadvantaged, a beginning farmer or rancher, or a limited resource farmer may be eligible for SURE without a policy or plan of insurance or NAP coverage.

For more information on the 2009 SURE program, visit any FSA county office or <http://www.fsa.usda.gov/sure>.

## WANT AN E-NEWSLETTER?

Producers utilizing e-mail now have the opportunity to receive the Wisconsin Farm Service Agency (FSA) State Newsletter electronically. Beginning March 1, 2011, producers wishing to receive an electronic copy of the newsletter may do so by subscribing to the Wisconsin FSA e-mail news. To subscribe to the electronic delivery service, visit the Wisconsin FSA website at [www.fsa.usda.gov/wi](http://www.fsa.usda.gov/wi). Click on “*Subscribe to Wisconsin FSA E-mail News*” on the right side of the Wisconsin FSA homepage in the “*I Want To....*” box. Individuals will be prompted to enter an email address, then after clicking the “*Submit*” button; choose which e-mail notifications to receive, including the Wisconsin Newsletter.

For questions or information about signing up for FSA newsletter e-mail alerts, producers can contact the FSA office at 262-878-3353.



**ATTENTION  
YOUTH OF  
RACINE,  
KENOSHA AND  
MILWAUKEE  
COUNTIES!**

Money management and responsibility are two very important lessons for you to learn before beginning life on your own.

The Farm Service Agency (FSA) Entrepreneurship Loans are available to young men and women ages 10-21 that are participating in 4-H, FFA or similar organizations. Loan funds may be used to finance a modest, income producing, agriculture-related project. These loans provide an opportunity for rural youth to acquire experience and education in agriculture-related skills.

The project must be part of an organized and supervised program and must produce sufficient income to repay the loan. Youth may borrow up to \$5,000 to pay for livestock, equipment and supplies. Through the management of your

project, you can learn the value of working hard and the reward of realizing how they can profit from that work.

Please contact your local FSA office for more information about Entrepreneurship Loans.

#### MARCH INTEREST RATES

Farm Operating-Direct	2.50%
Farm Ownership-Direct	4.875%
Farm Own-Direct, Joint Financing	5.00%
Farm Own-Downpymt	1.50%
Conservation Loan	4.875%
Farm Storage Facility Loan (FSFL)- 7 yrs	2.875%
FSFL- 10 years	3.50%
FSFL-12 years	3.875%
9 month Commodity Loans	1.250%

\*EFFECTIVE MAR 1, 2011-MAR 31, 2011\*

### DCP and ACRE Sign-up Deadline is June 1, 2011

Producers are encouraged to sign up now for the 2011 Average Crop Revenue Election Program (ACRE) and the Direct and Counter-cyclical Program (DCP). With spring planting several months away, signing-up now will ease the potentially long wait times and scheduling conflicts that arise as the June 1 deadline approaches.

Producers need to sign a DCP or ACRE contract annually to be eligible to receive program benefits.

FSA computes DCP Program payments using base acres and payment yields established for each farm and makes direct payments at rates established by statute regardless of market prices. For 2011, direct payments may be requested in advance based on 22 percent of the direct payment for each of the farm's commodities. Counter-cyclical payment rates vary with market prices and are issued only when the effective price for a commodity is statutorily set below its target price.

The ACRE program provides eligible producers a state-level revenue guarantee, based on the 5-

year state Olympic average yield and the 2-year national average price. Producers can also use the electronic (eDCP) and (eACRE) services, which will save time, reduce paperwork and speed up contract processing at FSA offices. It is available to eligible DCP and ACRE participants. To access these online services, an active USDA eAuthentication Level 2 account is necessary, which requires filling out an online registration form at: <http://www.eauth.egov.usda.gov> followed by a visit to the local USDA Service Center for identity verification.

Producers completing these steps and have an active USDA eAuthentication Level 2 account can access the eDCP and eACRE services online at: <http://www.fsa.usda.gov/dcp> and then click on the link "Access eDCP/eACRE Online Services" which is located under the "I Want to..." section. Lastly, click on the "Access eDCP/ACRE Service" link.

The decision to enroll in the ACRE Program is irrevocable. The owner of the farm and all producers on the farm must agree to enroll in ACRE. Once enrolled, the farm shall be enrolled for that initial crop year and will remain in ACRE through the 2012 crop year.

The June 1, 2011, deadline is mandatory for all participants. USDA will not accept any late-filed applications.

#### Important FSA Deadlines to Remember

CRP General Signup	April 15
DCP/Acre signup	June 1
NAP producers bring in 2010 production	July 15
ACRE producers bring in 2010 production	July 15
Acreage reporting	July 15
2009 SURE signup	July 29
Continuous CRP	Ongoing



## NEW FARMLAND PRESERVATION TAX CREDITS

The new farmland preservation tax credit available for farmers to claim on their 2010 income tax return is generating a number of questions from farmers and tax preparers. "Farmers are eligible for Wisconsin income tax credits in exchange for keeping land in agricultural use and complying with state soil and water conservation requirements," explained Keith Foye, land management section chief, Wisconsin Department of Agriculture, Trade and Consumer Protection (DATCP). "The farmland preservation tax credit has been around for many years. The Working Lands Initiative passed by the Legislature in 2009, simplifies the credit formula to a per-acre credit significantly increases on-average tax credits for farmers".

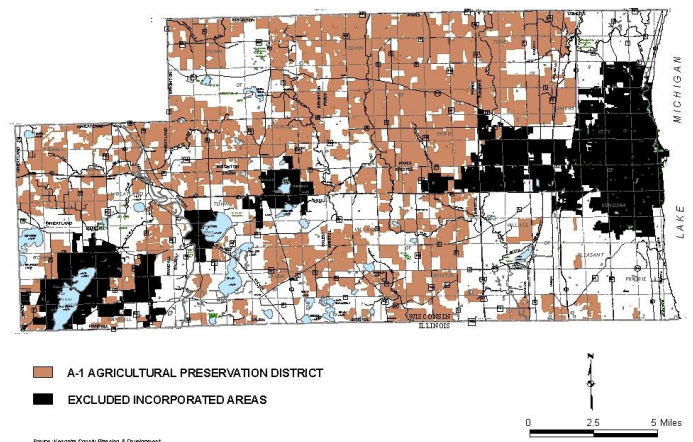
DATCP has been receiving a large number of questions about the new farmland preservation tax credits. The answers to commonly asked questions include:

- Farmers participating in the program through farmland preservation zoning must use the new Schedule FC-A for their tax returns. The schedule forms are available from the Department of Revenue (DOR) visit their website at <http://www.dor.state.wi.us/html/taxind10.html>.
- Farmers collecting tax credits under farmland preservation zoning do not need to attach a zoning certificate to their 2010 income tax return.
- Farmers under farmland preservation zoning are eligible for \$7.50 per acre tax credits on all land that is zoned A-1 Agricultural Preservation District, including the cropland, pastureland, farmstead, woodland, wetlands, grasslands, etc.
- Farmers under A-1 Agricultural Preservation Zoning that did not collect a farmland preservation tax credit in the previous year must obtain a Certificate of Compliance from Kenosha County Land & Water Conservation (KLWC) to be eligible to receive the tax credit. This certificate must be included with the tax return to be eligible for the credit. Farmers must be able to show that they meet the soil and water conservation requirements to receive the certificate. Farmers under zoning that did collect a tax credit in the previous year should contact KLWC at (262) 857-

1895. These farmers will have to agree on a schedule of compliance to ensure they will meet the soil and water conservation requirements within a specific period of time, but before December 31, 2015.

- The soil and water conservation requirements (agricultural performance standards) include those listed in ATCP 50, Wis. Adm. Code, which includes requirements for soil erosion control, nutrient management plan, clean water diversion, manure storage facilities meeting standards, and the manure management prohibitions.
- Gross farm revenue must come from agricultural use of the land. If land is rented, the owner can claim the tax credits based on gross farm revenue produced by the renter. The actual rent paid is not counted toward gross farm revenue. Also, payment received, such as payment for enrolling land in the federal conservation reserve program (CRP), and other state and federal programs can be used to meet the gross farm revenue requirement.
- Land that is under the Managed Forest Law (MFL) is eligible for the tax credit if the other minimum requirements, including the gross farm revenue, are met.

A-1 AGRICULTURAL PRESERVATION DISTRICTS IN KENOSHA COUNTY: 2010



To keep Kenosha farmers eligible for farmland preservation tax credits Kenosha County is in the process of updating its existing Farmland Preservation Plan. Your participation is essential, watch for public meeting announcements.

For more information on the FPP tax credits, contact Sandy Weisensel, DATCP, (608) 224-4633 or Elaine Kroeger, DOR, (608) 266-2442. For zoning information or a certificate of compliance, contact Dan Treloar, KLWC, (262) 857-1895.





Hello Landowners and Producers in Kenosha, Racine, and Milwaukee Counties. I'd like to take this opportunity to introduce myself. My name is Brandi Richter and I will be the Acting District Conservationist (DC) now that Jerry Hebard has retired. I've been with NRCS since 2001 and the DC in Waukesha County since 2007. I will continue in the capacity of Acting DC here in Union Grove until budgetary issues are resolved and staffing decisions are able to be made.

In the mean time I look forward to working with you. I wish you all great weather and a safe and successful spring planting season. As you head to the fields, please keep the following in mind.

## COMPLIANCE TO MAINTAIN USDA PROGRAM ELIGIBILITY

### HIGHLY ERODIBLE LAND

On highly erodible cropland, farmers must follow an acceptable conservation system. Don't risk losing your eligibility for USDA programs. A conservation system is needed for all highly erodible cropland, including any new land being brought into production. Federal law requires that all persons that produce agriculture commodities must protect all cropland classified as being highly erodible from excessive erosion. For compliance, conservation systems must result in a "substantial reduction" in cropland soil loss, defined as 2T or less, with T being the tolerable soil loss level.



### -Acceptable Conservation Systems

specifically "plans", are required to maintain USDA program eligibility. Farmers self-certify that acceptable conservation systems are being used.

### WETLANDS



If you drain, clear trees, fill, or otherwise manipulate a wetland so that it can be cropped, you will lose eligibility for USDA programs. Before you do any alteration to a wet area, including clearing trees or maintenance of existing drainage, contact NRCS or FSA to request a wetland determination. To maintain eligibility, anyone participating in USDA farm programs, must self certify that they have not produced crops on wetlands converted after December 23, 1985, and did not convert a wetland after November 28, 1990, to make agricultural production possible.

If Swampbuster is violated, USDA farm program benefits may be lost. If participants convert a wetland, they may lose benefits for the current year, and for the years that follow until the wetland's functions and values are restored.

Swampbuster has reduced the loss of wetlands due to agricultural activities to the lowest levels on record. Swampbuster helps preserve the environmental functions and values of wetlands, including flood control, sediment control, groundwater recharge, water quality, wildlife habitat, recreation, and esthetics.



**Racine County Land Conservation**  
**14200 Washington Ave.**  
**Sturtevant, WI 53177**  
**262-886-8479**

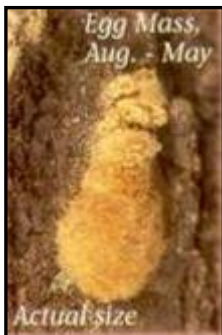
<http://www.racineco.com/landconv/>

Staff Contributions by:  
Chad Sampson, Jon Grove, & Krystal Freimark

### **Tree & Shrub Pick Up REMINDER**

For those of you who ordered trees, shrubs, or seed mixes from the County tree sale; **the tree pick up dates are scheduled for Tuesday, April 19<sup>th</sup> 1 - 6 p.m. and Wednesday, April 20<sup>th</sup> 9 a.m. – 6 p.m. at the Racine County Fairgrounds.** Dates have been modified from previous years to accommodate the Good Friday holiday. Receipts and pick up instructions will be sent out in the beginning of April. Also, the County has two tree planters available for rental, starting at \$30 per planter. Contact us today to reserve one.

### **I Spy A Gypsy Moth Caterpillar?**



With temperatures on the rise, bare ground in sight, and the signs of spring awakening ... it's time to be on the look out for Gypsy Moth caterpillars and egg masses. Caterpillars usually emerge May – July, while egg masses are present from August – May. If you notice any infestations please contact the DNR (1-800-642-MOTH) or the Racine County Land Conservation Department and we will investigate the situation. If requirements are met you may be placed on the 2012 spray list. For additional information visit [www.gypsymoth.wi.gov](http://www.gypsymoth.wi.gov)



**The 2010 Racine County aerial photographs are now available online at**  
**<http://maps.sewrpc.org/racinemapping/>**

## ***Annual Poster Contest***

The Land Conservation office annually participates in the Wisconsin Land and Water Conservation Association (WLWCA) environmental poster contest. The 2010 theme was “Conservation Habits = Healthy Habitats”. Elementary students from various Racine Unified schools participated in this year’s contest. The winning poster created by Trenton Hooper (age 5) of Stephen Bull Fine Arts School advanced to the Southeast area contest and took 1st place in the K-1 division. Trenton’s poster may be viewed at the Racine County Land Conservation County Fair information booth.



## ***Residential Wind Energy Facilities***

Last fall a Rural Landowners Conference was held for local residents who have an interest in small scale farming, alternative energy, and/or agricultural animal care. One topic discussed was wind power. As of 2004, Racine County has had a residential wind power ordinance in place. A brief overview is listed below:

- Wind facilities may not be located in residential districts, shoreland, wetland, floodplain or environmental corridors.
- Structures are allowed in A-2 and C-2 zoning districts.
- For properties ½ to 1 acre in size, tower height is limited to 80'. Sites over an acre are subject to FAA requirements.
- Tower setbacks are reflective of the tower's height.
- Wind turbine noise should not exceed sound pressure levels in excess of 60 dB.
- All towers are subject to a site plan review.

Please contact Racine County Planning Department at 262-886-8470 for additional information.

**Kenosha & Racine Counties**

**Kenosha County**  
PO Box 550  
Bristol, WI 53104  
262-857-1945

**Racine County**  
14200 Washington Avenue  
Sturtevant, WI 53177  
262-886-8460

Article Submitted by: Rose Skora  
rose.skora@ces.uwex.edu

## 2010 CUSTOM RATE GUIDE AVAILABLE

The 2010 Custom Rate Guide offers information on approximate values for field work, machinery as well as farm labor rates in Wisconsin.

The guide is just that, a guide, however; it is a useful tool in helping determine what costs/charges may be appropriate. A sample of the information found in the guide includes:

### Farm Labor (Per Hour)

Category	Range in Rates	State Averages	Averages in SE WI
Machine Operator	\$8 - \$21	\$12.90	\$12.00
General Farm Labor	\$7 - \$16	\$10.60	\$10.10
Farm Truck Driver	\$7.50 - \$20	\$12.70	\$12.90

### \*Land Tillage (Dollars per Acre)

Operation	Range in Rates	State Averages	Averages in SE WI
Moldboard Plowing	\$10 - \$28	\$17.70	\$16.90
Chisel Plow	\$5 - \$25	\$15.30	\$13.80
Field Cultivator	\$5 - \$24	\$11.80	\$11.10

### \*Harvest Operations (Dollars per Acre)

Harvest Operation	Range in Rates	State Averages	Averages in SE WI
<b>Combining</b>			
Corn	\$20 - \$40	\$28.10	\$28.40
Soybean	\$18 - \$38	\$27.70	\$27.70
Small grain	\$18 - \$36	\$27.60	\$27.80
<b>Hay Harvest</b>			
Mowing and conditioning	\$5 - \$20	\$12.40	\$13.10
Raking	\$2 - \$12	\$6.20	\$6.80
Windrow merging	\$3 - \$16	\$8.50	\$9.55

\*Partial Listing of harvesting operations



### Planting Operations (Dollars per Acre)

Operation	Range in Rates	State Averages	Averages in SE WI
<b>Conventional Till</b>			
Alfalfa, Clover etc	\$6 - \$21	\$14.60	\$15.00
Corn less than 30" rows	\$10 - \$24	\$18.20	\$16.30
Corn 30" rows or greater	\$8 - \$23	\$15.80	\$15.70
Soybeans, Row	\$8 - \$25	\$16.60	\$16.70
Soybeans, drill	\$8 - \$23	\$15.30	\$15.10
Small Grains	\$6 - \$21	\$14.60	\$15.00
<b>Mulch Till</b>			
Alfalfa, Clover etc	\$8.50 - \$20	\$15.90	\$18.00
Corn less than 30" rows	\$12 - \$24	\$18.20	\$16.30
Corn 30" rows or greater	\$10 - \$25	\$16.90	\$16.40
Soybeans, Row	\$11 - \$25	\$17.00	\$16.60
Soybeans, drill	\$8.50 - \$25	\$16.50	\$16.80
Small Grains	\$8.50 - \$25	\$15.60	\$15.20
<b>No Till</b>			
Alfalfa, Clover etc	\$9 - \$20	\$16.60	
Corn less than 30" rows	\$19 - \$25	\$21.50	\$21.30
Corn 30" rows or greater	\$12 - \$25	\$19.00	\$19.10
Soybeans, Row	\$12 - \$25	\$19.20	\$19.10
Soybeans, drill	\$9 - \$25	\$18.40	\$19.50
Small Grains	\$9.50 - \$25	\$17.50	\$16.70

### Fertilizer and Chemical Applications (Dollars per Acre)

Application	Range in Rates	State Averages	Averages in SE WI
Liquid Fertilizer	\$5 - \$12	\$7.70	\$7.55
Dry Fertilizer	\$2 - \$8.50	\$5.05	\$5.15
Anhydrous Ammonia	\$6 - \$15	\$10.30	\$10.40
Lime	\$3 - \$15	\$7.15	\$6.00
Spraying Pesticides	\$5 - \$12	\$7.70	\$7.55

For a complete listing of the 2010 Custom Rate guide, it can be downloaded from the following website: <http://www.uwex.edu/ces/ag/facstaff/rateguide.html> or one can be requested by calling either UW Extension office.

**Horse Workshop**, April 2<sup>nd</sup>, 2011, 8am – 2:15pm  
Kenosha County Center, Bristol, WI  
Trail riding, senior horse, and advanced horseman tracts.

\$35/person or \$60/2 people and \$15/youth before March 28<sup>th</sup>. Registration fees increase \$10 after March 28<sup>th</sup>.

Call or email Rose Skora for information. Brochure available at:  
<http://kenosha.uwex.edu/category/agricultural-news/>





## DIRECTORY OF AGENCIES

### Kenosha/Milwaukee/Racine Farm Service Agency (FSA)

1012 Vine Street, Union Grove, WI 53182 1330  
Phone: 262-878-3353, Ext 2 Fax: 262-878-3283

### Natural Resources Conservation Service (NRCS)

1012 Vine Street, Union Grove, WI 53182 1330  
Phone: 262-878-1243, Ext 3 Fax: 262-878-3283

### Racine County Land Conservation Division

14200 Washington Avenue, Sturtevant, WI 53177  
Phone: 262-886-8479, Fax: 262-886-8488

### Kenosha County Land & Water Conservation

19600 75<sup>th</sup> St, PO Box 520, Bristol, WI 53104  
Phone: 262-857-1895, Fax: 262-857-6508

### Kenosha County UW-Extension

19600 75<sup>th</sup> St, PO Box 550, Bristol, WI 53104  
Phone: 262-857-1945, Fax: 262-857-1998

### Racine County UW-Extension

14200 Washington Avenue, Sturtevant, WI 53177  
Phone: 262-886-8460, Fax: 262-886-8489



The U.S. Department of Agriculture (USDA) prohibits discrimination in all its programs and activities on the basis of race, color, national origin, sex, religion, age, disability, political beliefs, sexual orientation, or marital or family status. (Not all prohibited bases apply to all programs.) Persons with disabilities who require alternative means for communication of program information (Braille, large print, audiotape, etc.) should contact USDA's TARGET Center at (202) 720-2600 (Voice and TDD).

To file a complaint of discrimination, write USDA, Director, Office of Civil Rights, Room 326-W, Whitten Building, 1400 Independence Ave. SW, Washington, D.C. 20250-9410 or call (202) 720-5964 (voice and TDD). USDA is an equal opportunity provider and employer.

**Ties to the Land Newsletter**

**Change Service Requested**

**Farm Service Agency  
Natural Resources Conservation Service  
Racine County Land Conservation  
Kenosha County Land and Water Conservation  
UW-Cooperative Extension**

**Your Resource Partners:**

**PRESORT STD  
AUTO  
U.S. POSTAGE PAID  
MAILED FROM ZIP CODE 53182  
PERMIT NO. 00049**

**TIES TO THE LAND NEWSLETTER  
Kenosha/Milwaukee/Racine Farm Service Agency  
US Department of Agriculture  
1012 Vine Street  
Union Grove, WI 53182 1330**