



COUNTY OF KENOSHA

Chris Masin, PE, Director
Department of Public Works and Development Services

Gary Sipsma, Director
Division of Highways
19600 75th Street, Suite 122-1
Bristol, Wisconsin 53104
(262) 857-1870
Fax: (262) 857-1885

Joint Committee of Public Works/Facilities and PDEEC Committee Minutes
Monday, February 3, 2014
6:30 P.M.
Kenosha County Center, Conference Room A
19600 75th Street
Bristol, WI

1) Call to Order (00:05)

- Joint meeting called to order at 6:30 p.m. by Chairman Dennis Elverman.

2) Roll Call (0:16)

- Public Works/Facilities Committee members present were Supervisors Dennis Elverman, Doug Noble, Rick Dodge, Mike Skalitzky and Gabe Nudo. Youth in Governance present were John Setter and Peter Wierzba.
- Planning, Development and Extension Education Committee members present were Supervisors Kimberly Breunig, Erin Decker, Michael Underhill, Rick Dodge and Mike Skalitzky. Youth in Governance present were Emily Gerstein and Ashley Kenney.
- Staff members present were Chris Masin, Gary Sipsma, Jonathan Rudie, Dan Drier, Frank Martinelli, Andy Buehler, Jim Kupfer, Bob Riedl, Carol O'Neal and Vickie Galich. Golf staff present was Bob Tierney, Andy Otis, Rich Heinisch, Laurie Stanek, Erin McGrath and Scott Driscoll.

3) Approval of Minutes from Previous Meeting (1:10)

Motion by Supervisor Skalitzky to approve the Public Works-Facilities Committee minutes from January 13th 2014, seconded by Supervisor Dodge. All ayes including YIG, motion carried.

4) Chairman/Committee Members/Supervisor/YIG comments (00:55)

No comments

5) Citizens Comments (1:31)

No citizen comments.

6) Review and approve the Resolution to Appoint Chris Masin as Director of Public Works and Development Services (1:55)

Public Works-Facilities Committee:

Motion by Supervisor Dodge to approve the resolution, seconded by Supervisor Nudo. All ayes including YIG, motion carried.

Planning, Development and Extension Education Committee:

Motion by Supervisor Dodge to approve the resolution, seconded by Supervisor Decker. All ayes including YIG, motion carried.

Planning, Development and Extension Education Committee excused from the remainder of the meeting. Supervisor Underhill remained in attendance.

Highway

7) New Business

a. Director's Report (6:15)

Gary Sipsma provided the Committee an update on winter maintenance and salt inventory.

Supervisor Skalitzky requested Mr. Sipsma look at CTH E between I94 and 90th Avenue, as it is very rough and may need some type of signage.

Parks

8) Old Business

a. KD Park Master Plan (14:44)

Nothing discussed.

9) New Business

a. Review and approve Resolution to Obtain Bird City Status for Kenosha County (14:55)

Motion by Supervisor Nudo to approve the resolution, seconded by Supervisor Skalitzky. All ayes including YIG, motion carried.

b. Review and approve Resolution for the Kenosha County Public Snowmobile Trail (17:28)

Motion by Supervisor Skalitzky to approve the resolution, seconded by Supervisor Noble. All ayes including YIG, motion carried.

c. Director's Report (20:08)

Jon Rudie reviewed his written report sent to the committee in the packets.

Golf

10) New Business

a. Review and approval of the Proposed 2014 Golf Rates (No changes from 2013) (25:28)

Motion by Supervisor Nudo to approve the proposed rates as presented, seconded by Supervisor Skalitzky. All ayes including YIG, motion carried.

b. Review Golf Maintenance Staff reorganization (37:50)

Mr. Drier introduced the lead golf staff for grounds maintenance, the head golf professional, the golf shop, and food & beverage. He reviewed the organizational chart included in the committee packet.

Supervisor Noble has received emails relative to the golf reorganization and the courses will be under the microscope in 2014. Mr. Drier responded they in attendance "understood" and the course conditions would be as good or better as previous year.

c. Director's Report (42:36)

Dan Drier reviewed the report sent to the committee.

Facilities

11) Old Business

Frank Martinelli reviewed the report handed out the committee regarding items a, b, and d.

a. Update – 60th Street Tower Replacement (46:53)

b. Update – KCDC HVAC Controls Project (49:04)

c. Update – Yule House RFP process for Realtor (49:30)

Supervisor Nudo reported he is abstaining from comments and any votes regarding this agenda item.

Carol O'Neal reported the realtor has a potential client interested in a contract sale. The party has looked at the house several times and would like to enter into a lease to own contract until the party has sold their property. Ms. O'Neal has shared this information with Corporation Counsel. Mr. Vash told her this type of sale legal. Chairman Elverman polled to the committee to see if they would allow staff to proceed. The result was four members in agreement to proceed and one abstained.

d. Update – KCAB Critical Façade and Roof Survey (55:30)

12) New Business

- a. Review and approve Resolution to Approve Acceptance of \$6500 grant from the Wisconsin Division of Energy Services to research potential cost savings and improve efficiencies to utility spending at Kenosha County facilities (57:53)**

Motion by Supervisor Skalitzky to approve the resolution, seconded by Supervisor Dodge. All ayes including YIG, motion carried.

13) Other Matters As May Appropriately be Brought Before the Committee (1:02:08)

No other matters discussed.

14) Adjournment (1:02:11)

Motion by Supervisor Skalitzky to adjourn, seconded by Supervisor Noble. Motion approved. Meeting adjourned at 7:32 PM.

Prepared by: Vickie Galich

Recording of meeting is available on the County's Website.



COUNTY OF KENOSHA

Jonathan L Rudie, General Manager
Park Operations
P. O. Box 549
Bristol, Wisconsin 53104
(262) 857-1869
Fax: (262) 857-1885

2014 January Park Report

- **Veterans Memorial Cannon**
 - We have been told we will be getting one in the near future and we are still waiting for the paperwork necessary to get it out the gate at Fort McCoy.
- **Kemper Center**
 - The new parts were installed in the boiler last Friday.
- **Emerald Ash Bore**
 - We are working with the person who organized the City of Oak Creeks ash tree removal utilizing loggers. We are hopeful that we will be able to get the trees marketed as lumber logs and pulp wood and possibly get this done at a significant savings to the County
- **Thompson Property**
 - Met with the Kenosha County Historical Society and Kenosha Museum and did a walk thru of the house to make sure anything of historical significance is salvaged before demolition.
- **Silver Lake Mountain Bike Trail**
 - The Mountain bike group held their second annual fat tire bike race at Silver Lake Park on January 18th. They had 70 riders.
- **Pringle Nature Center**
 - Last Saturday Discover Wisconsin filmed a segment on winter recreation snowshoeing at the PNC. They also filmed at Bong Recreation Area, Wilmot Mountain Ski Hill and UW Parkside. The show will air on May 7th.
- **KD Park**
 - Attached is a concept of the KD Dam access parking lot. RA Smith is donating their time for the design and grading plans. Every effort is being made to move forward with this project.
 - I also have RA Smith working on the grading plans for the park road, parking lots and boat launch.
 - The IT Division has installed the antennae and equipment at the KD Shop for internet access. The computers and phones will follow soon. Once this is done we can move from Fox River and close up the old house.

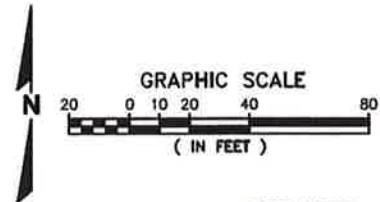


KD PARK NORTH PARKING LOT SITE PLAN



LEGEND

- TURF RESTORATION LIMITS
- ACCESS DRIVE AND TAPERS IN R.O.W.:
5" ASPHALT PAVEMENT ON
10" CRUSHED LIMESTONE BASE
- PARKING & ACCESS DRIVE:
12" RECYCLED AGGREGATE



DATE: 1/28/14

Kenosha County 2014 Proposed Golf Pass Rates

If you love to play championship-caliber golf, but do not like to pay those types of greens fees, our yearly golf passes will make your dreams come true. As a Kenosha County Golf Pass holder, you are entitled to unlimited golf based on availability at both Brighton Dale Links and Petrifying Springs. The Golf Courses are soft spike only facilities. Yearly golf passes are not refundable or transferable.

Gold Golf Pass including Golf Car \$1,495 per person

This Pass is truly "unlimited" in that it includes unlimited golf with shared golf car, 2 week advance tee times and range balls for the Pass holder only. Split Payment option \$780 down \$745 by June 14th 2014. (31)

Silver Walking Golf Pass \$995 per person

This Pass includes unlimited golf 2 week advance tee times, and range balls for the Pass holder only. Split Payment option \$530 down \$495 by June 14th 2014. (30)

Couple Yearly golf passes \$1,695 per Married Couple for Silver Pass or \$2,395 for Gold Pass

Silver Split Payment option \$880 down \$845 by June 14 '2014, Gold Split Payment option \$1230 down \$1,195 by June 14th '2014. (S51) (G49)

SPECIAL BONUS!

Silver and Gold Golf Pass holders paid in full receive a special bonus as our way of saying thank you. You will be entitled to **four complimentary golf passes** equal to your pass type at Brighton Dale Links valid weekends and holidays after 1PM and all day Monday through Friday throughout the season.

Adult Season walking (no restrictions) \$595; Play Permit fee of \$5.00 required. Split Payment option \$330 down \$295 by June 14th 2014. (21)

***Senior Pass** Walking \$325 Play Permit fee of \$5.00 required. (Anyone 55 years of age or older). Split Payment option \$195 down \$160 by June 14th 2014. (23)

***College Student** 12 credits with valid School ID Season walking \$195; Play Permit fee of \$5.00 required. Split Payment option \$125 down \$100 by June 14th 2014. (9)

***Junior Pass** Walking \$95 Play Permit fee of \$5.00 required. (Anyone 17 years of age or younger). Split Payment option \$75 down \$50 by June 14th 2014. (7)

(Senior, College Student and Junior passes valid Mon-Fri till 3:30PM not valid for afternoon league play; Sat/Sun/Holidays after 1:00 PM)

All Golf Yearly golf passes also include the following benefits:

GOLF Guest Rates: \$20 Walking, \$29 with shared cart for 18 Monday through Friday (except Holidays).
\$30 Walking, \$39.00 with shared cart for 18 Saturday, Sunday and Holidays.
You must check-in and play with guest to receive these rates.

Golf Cars- 10% OFF your full rate golf car fees

GOLF SHOP- 15% OFF on in stock Golf Shop Merchandise over \$5 (excludes sale merchandise).

FOOD & BEVERAGE- 10% OFF Food and Beverages in the Clubhouse Only.

Permanent Tee-Times:

You may reserve a yearly Permanent Tee-Times for a nonrefundable \$200 reservation fee per tee time. If your Tee-Time is not fully utilized or any Pass holder of your group no-shows without cancelation, your permanent Tee-Time will not be honored for the remainder of the season. When the golf course schedules outings they will take precedent over permanent tee times. *For more information, please contact Brighton Dale Links or Pets Golf Shop at 262-697-GOLF (4653)*

2014 Kenosha County Golf Rates May 3 rd – Sept. 28 th	Brighton Dale		Petrifying Springs	
	18 Holes	9 Holes	18	9 Holes
*****Walking*****				
Monday through Friday	\$26	\$16	\$24	\$14
Early Bird Weekdays Tee off before 8 AM no holidays	\$20	\$12	\$20	\$12
Weekends & Holidays	\$33	\$18	\$32	\$17
Weekend & Holiday Afternoon Special	\$25	\$17	\$25	\$17
Twilight-After 2 PM Everyday	\$20	\$15	\$20	\$14
Super Twilight 5:30 PM Mon–Thurs After 4 PM Fri-Sun	\$15	\$10	\$15	\$10
Weekday Replay Round	\$18	\$10	\$18	\$10
Weekend Replay Round	\$20	\$15	\$20	\$15
Juniors/Seniors Mon-Fri before 3:30 Sat Sun Holi after 1P	\$19	\$11	\$19	\$11
*****Golf with Riding Golf Car*****				
Monday through Friday	\$42	\$25	\$40	\$23
Early Bird Weekdays Tee off before 8 AM no holidays	\$35	\$20	\$35	\$20
Weekends & Holidays	\$49	\$27	\$48	\$26
Weekend & Holiday Afternoon Special	\$40	\$25	\$40	\$25
Twilight Everyday after 2 PM Everyday	\$35	\$24	\$35	\$23
Super Twilight 5:30 PM Mon-Thurs. After 4 PM Fri-Sun	\$25	\$18	\$25	\$18
Weekday Replay Round	\$25	\$17	\$25	\$17
Weekend Replay Round	\$30	\$22	\$30	\$22
Juniors/Seniors Mon-Fri before 3:30 Sat Sun Holi after 1P	\$33	\$19	\$33	\$19
*Seniors are defined as people who are or will be 55 or older in 2014				
*Juniors are defined as people who are 17 and younger.				
All players must be 7 years old or older to be on the golf course.				
GROUP/OUTING GOLF - Planning a group outing has never been easier. Call Bob Tierney, Golf Professional at 262-818-5085				

Rental Clubs	18 Holes	9 Holes
Full VIP Set	\$30	\$15
Starter Set	\$10	\$7.50

Gift Cards: It is always a special occasion when you give a Kenosha County golf gift card. Gift cards are available at the golf shop counters, the Department of Public Works or online at www.kenoshacountygolf.com

Rain Check Policy: The rain check will come in the form of a prorated credit slip depending on how many holes have been played. Rain checks will be issued if course is closed and no refunds will be made under any circumstances.

Dress Code: Kenosha County Courses are soft spike courses. Soft Spikes are available at the golf shop should players arrive without proper footwear. Golf wear including appropriate shirts and nice slacks or shorts. Denim is acceptable.

Yearly Golf Passes: Kenosha County Golf offers many different golf passes. Ask the Golf Staff Professionals about the different packages for 2014.

For more information or a tee time, please contact the Golf Shops.
Brighton Dale Links or Petrifying Springs 262-697-Golf (4653)
Or visit our websites at www.kenoshacountygolf.com



COUNTY OF KENOSHA

Daniel A. Drier, General Manager
Golf Operations
19600 75th Street Suite 122-1
Bristol, Wisconsin 53104
(262) 857-1865
Fax: (262) 857-1885

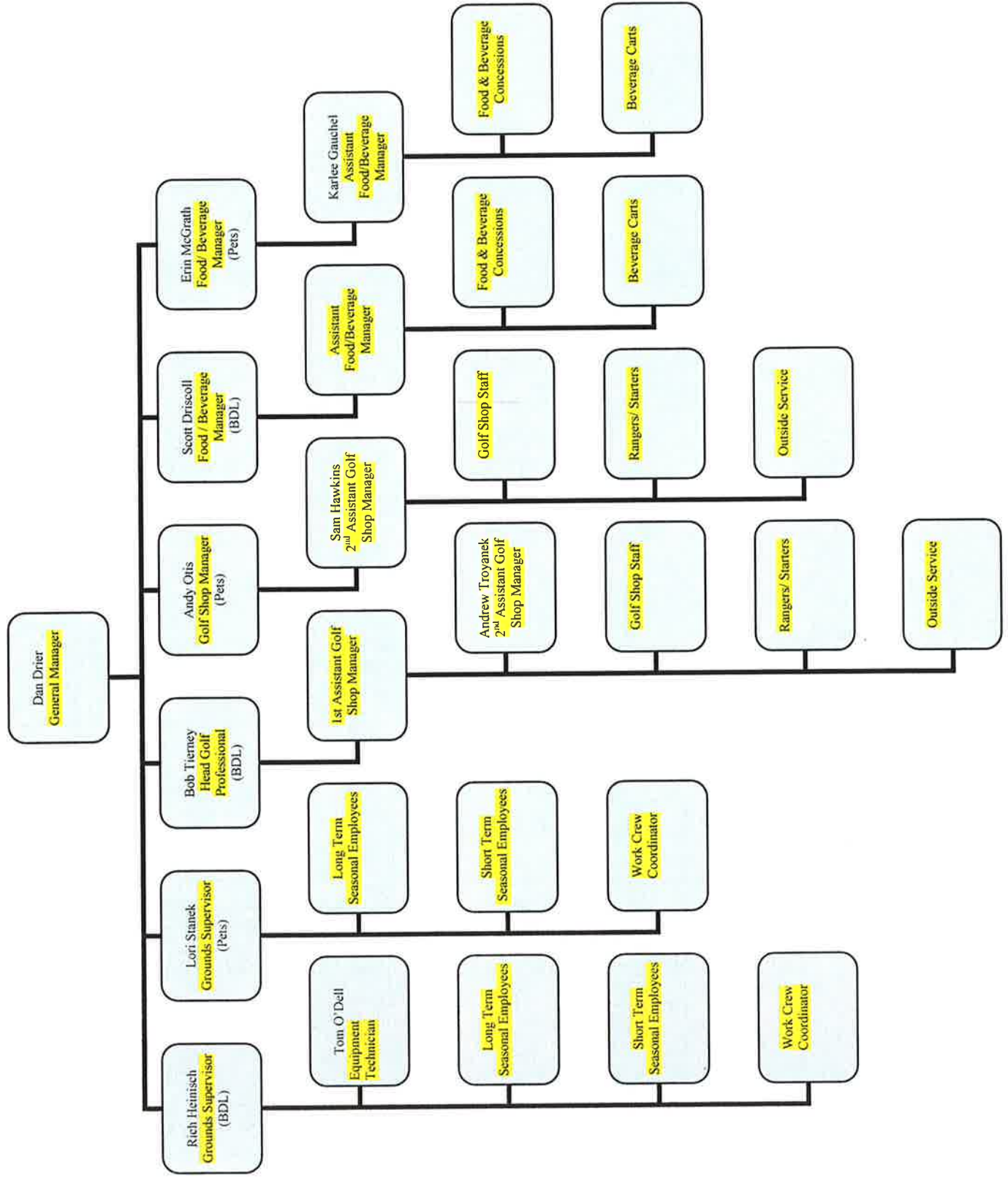
Division of Golf Update February 3, 2014 Public Works Committee Meeting

- I am finalizing the 2014 business plan. It has month by month initiatives of activities. It will give us a road map to continue on our successful path. The proposed 2014 peak season and pass holder rates remained unchanged since 2010 and are included in your meeting packet.
- I am working on getting ready for the Chicago Golf Show February 21st – 23rd and the Milwaukee Golf Show March 14th – 16th. This should again bring good recognition to the golf courses.
- We plan on opening the golf courses and clubhouses for the season March 21st 2014 depending on the weather.
- Our work with Golf Channel Solutions, a golf specific advertising company went well last year. We developed new golf specific websites for both golf courses that link to the county website that increased our online booking and overall presence on the web. We have email capture and e-mail blast capabilities through Golf Channel Solutions to over 12,000 people in our current database. We also have social media interfacing with Facebook.
- We are working on rebooking all of our past outings and finding new outings for 2014. Petrifying Springs is full for afternoon leagues for 2014. We should have around 400 league players again, the most we have been able to accommodate again since 2009. We are looking to fill more leagues in at Brighton Dale.

Projects we are working on at for 2014 are:

- Completion of the last two holes of fairway irrigation on the White Birch course at BDL. Tom Emmerich our irrigation consultant is working on the bid specs.
- Paving the Maintenance shop road and yard at Petrifying Springs as soon as possible this spring.
- Completing the cart path paving on the Blue Spruce Course at BDL. The highway department will be doing the paving work.
- Carpet Plus Outlet will be putting in new flooring in the BDL clubhouse.
- Purchasing some new golf cars, beverage carts, and a utility vehicle and mowing equipment.

2014 Kenosha County Golf Division Organizational Chart





2014 February Facilities Report By Frank Martinelli

- **60th Street Tower.**
 - January 20th Fiber optic line installed
 - Install of racks and equipment progressing
 - February 11th Joint Communications Committee meeting scheduled for final coordination of move from old to new tower
 - Mid March scheduled go live date

- **KCDC HVAC Controls Project**
 - Completed cut over of 3 of the 10 HVAC units to digital controls.
 - Completed retrofit of 10 VAV boxes using KCAB maintenance personnel

- **Yule House Seller Update**
 - Report by Carol O'Neal.

- **KCAB Critical Façade and Roof Survey**
 - Bids due February 5st
 - Work scheduled to begin mid March