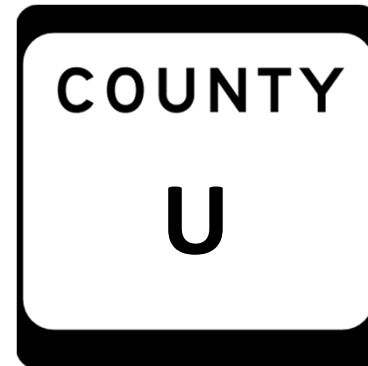
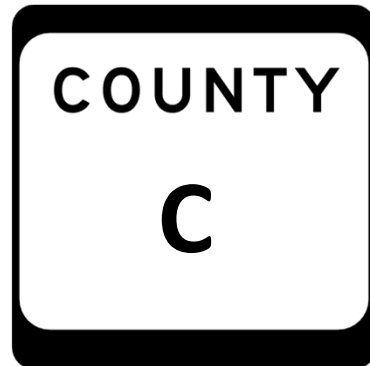


Public Involvement Meeting

Highway C and Highway U

Intersection Improvement Project

Project ID: 1527.00





July 19, 2023

Presented by: Chris Palmer, Senior Project Manager with PREMIER
Design + Build Group



Kenosha County
Wisconsin

PRESENTATION OUTLINE

	Project Team
	Purpose and Need
	Project Limits
	Project Schedule
	Project Overview
	Public Involvement



INTRODUCTIONS

PROJECT TEAM

Kenosha County

- Clement Abongwa, Highway Director
- Doug Coeur, Project Manager
- Joe Potente, Communications Manager

Developer Representative

- Chris Palmer, Senior Project Manager – PREMIER Design + Build Group
 - Buffalo Grove, Illinois

Construction Management Consultant

- Aaron Poster, Senior Project Manager - Clark Dietz Inc.
 - Kenosha, Wisconsin

Roadway Construction Contractor

- Joe Ruetz – Project Manager - Buteyn-Peterson Construction Co. Inc.
 - Sheboygan, Wisconsin



PURPOSE & NEED

The goal of the project:

- Improve intersection safety and efficiency
 - Accommodate increased traffic along CTH U / 136th Avenue
 - Installation of a traffic signal and left turn lanes along CTH C / Wilmot Rd.
- Traffic Signal advantages:
 - Lessen intersection angle crashes
 - Provide safer movements for left turning vehicles from CTH C and for vehicles entering from CTH U



PROJECT LIMITS

Limits:

- (County) Highway C + (County) Highway U intersection
- (County) Highway U south of intersection

Length:

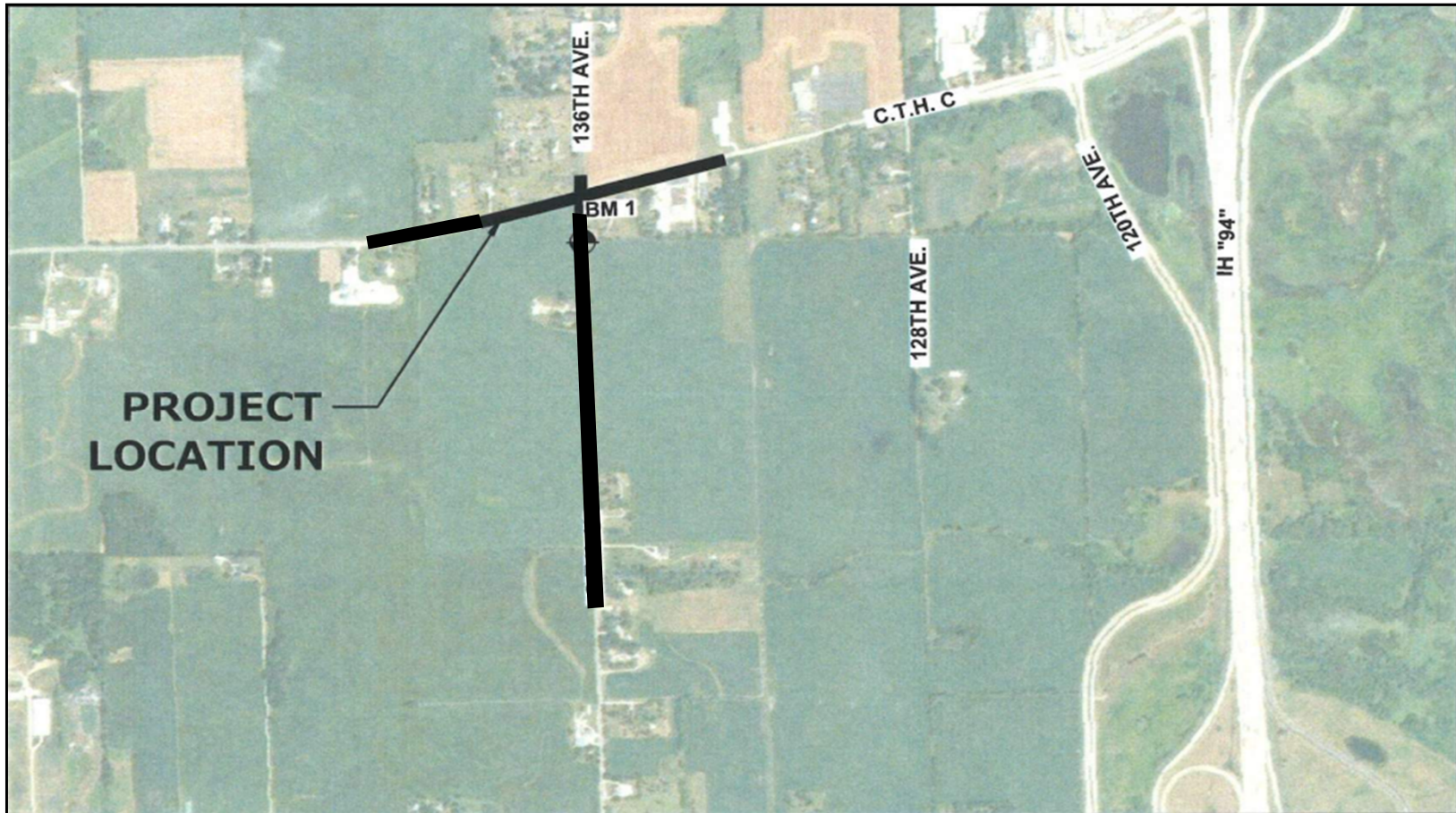
Highway C – ~2,700 ft

Highway U – ~3,400 ft

Construction: Summer of 2023 – Spring of 2024



PROJECT LIMITS



PROJECT SCHEDULE

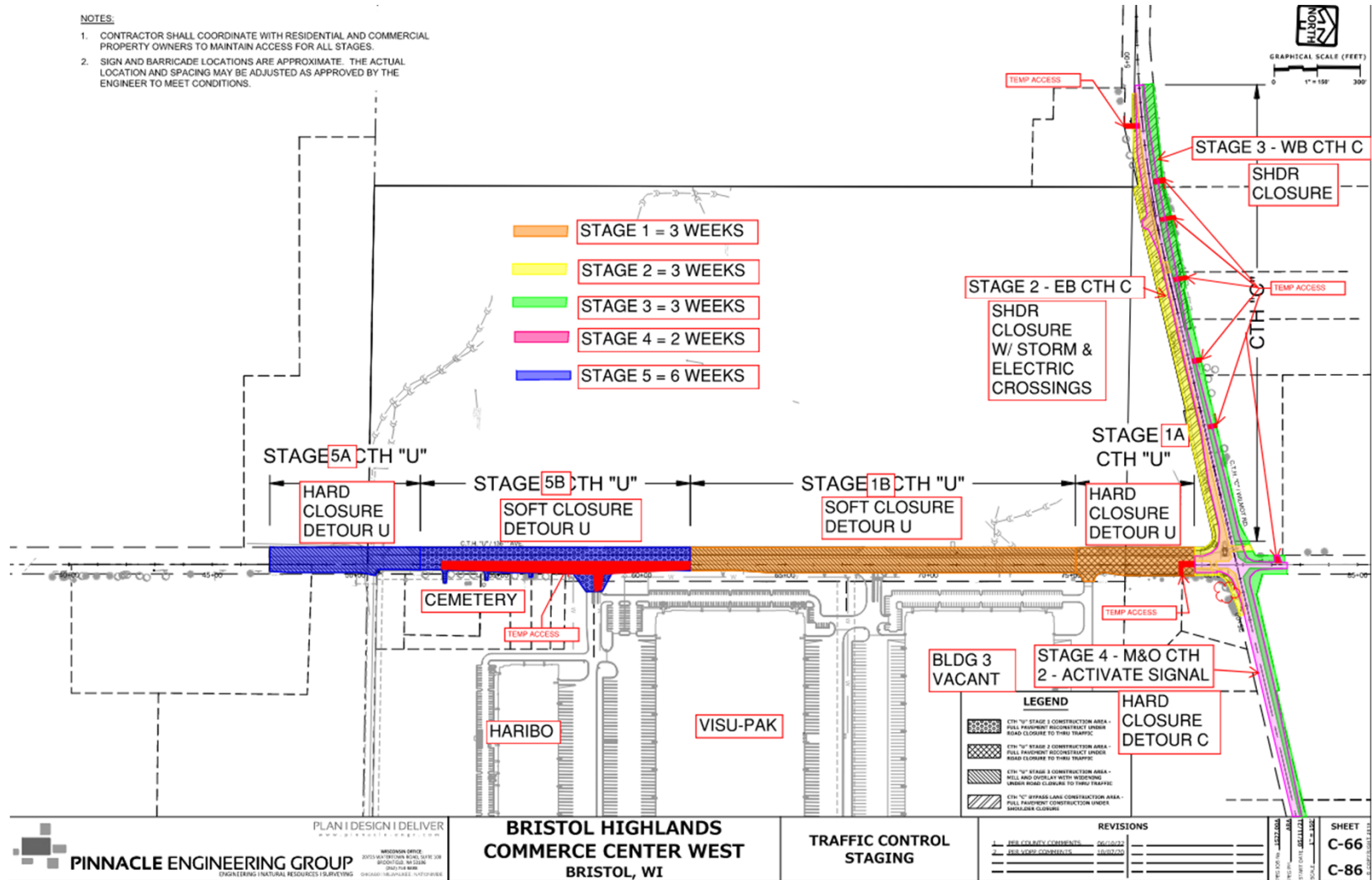
- Project scheduled to begin Aug. 1, 2023 with substantial completion in late fall of 2023.
- Highway C will have temporary signals scheduled to be completed in late fall of 2023.
- Permanent signals and other remaining work along CTH U will be installed in spring of 2024.
- Highway C will be scheduled to be closed to thru traffic in mid October of 2023 to allow for full resurfacing of the road.
- Highway U will be closed to thru traffic for the duration of the project. Winter is excluded.
- Access to local businesses and residences will be maintained.



PROJECT OVERVIEW

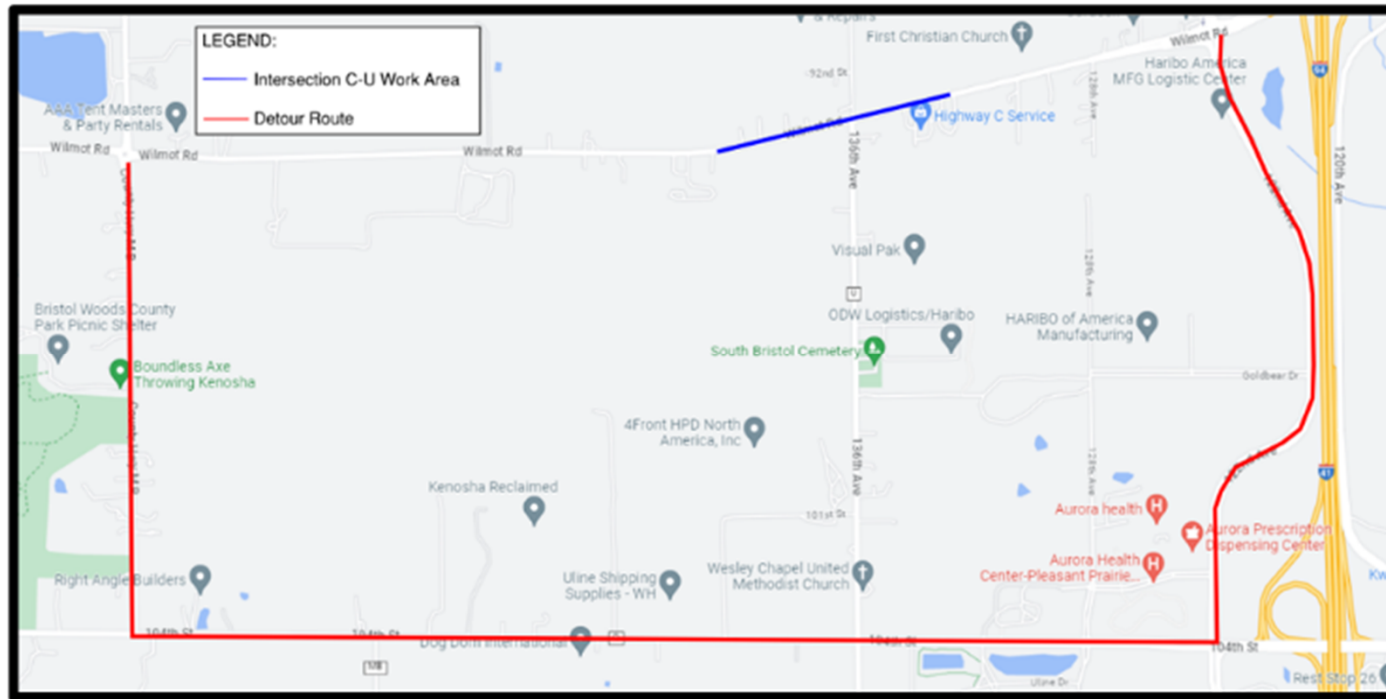
NOTES:

1. CONTRACTOR SHALL COORDINATE WITH RESIDENTIAL AND COMMERCIAL PROPERTY OWNERS TO MAINTAIN ACCESS FOR ALL STAGES.
2. SIGN AND BARRICADE LOCATIONS ARE APPROXIMATE. THE ACTUAL LOCATION AND SPACING MAY BE ADJUSTED AS APPROVED BY THE ENGINEER TO MEET CONDITIONS.



Kenosha County
Wisconsin

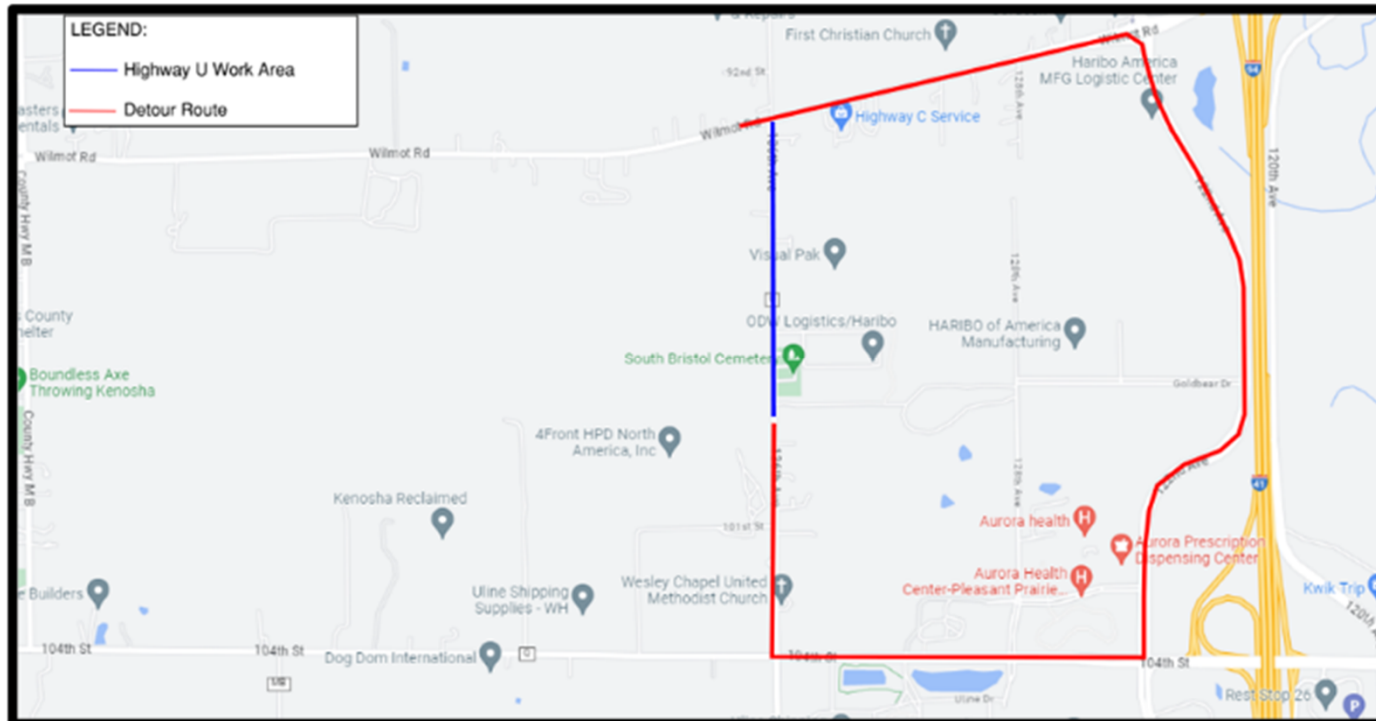
DETOUR – CTH C



- Highway C motorists are encouraged to utilize West Frontage Road to CTH Q, to CTH MB to detour around closure.
- Maintain access for EMS
- Access to local residents and businesses will be maintained. Harvesting to be coordinated with Construction Manager.



DETOUR – CTH U



- Highway U motorists are encouraged to utilize West Frontage Road to CTH C and or CTH Q to detour around closure.
- Maintain access for EMS
- Business Park and Cemetery will be provided access throughout construction



SITE SAFETY

- Safety of the traveling public and workers is our first priority
- Encouraging the public to obey all traffic signs
- We rely on the public to report any unsafe situation within the work zone
- Dust, noise, and drainage control during construction



Motorists should obey traffic control signs and pavement markings, and drive safely through the work zone



PUBLIC INVOLVEMENT

Kenosha County Public Works

Local Municipalities

Business Owners

Residents

Traveling Public



QUESTIONS?

THANK YOU!

LINK

- **Kenosha County Website**
 - www.kenoshacounty.org/highways

CONTACT INFO

**Doug Coeur, Kenosha County
Project Manager**

Email: Douglas.Coeur@kenoshacounty.org

Phone: (262) 653-1859

**Chris Palmer, PREMIER Design + Build
Group
Senior Project Manager**

Email: christopher.palmer@pdbgroupp.com

Phone: (847) 714-2186

**Aaron Poster, Clark Dietz
Construction Management Consultant**

Email: Aaron.Poster@clarkdietz.com

Phone: (847) 815- 4196