



HIGHWAY IMPROVEMENT PROJECT

WHEN and WHAT

Estimated Project Construction Duration: April 2024 through July 2024

- A Public Information Meeting is scheduled for **Monday, October 30, 2023, from 5 to 7 p.m.** at the Pleasant Prairie Village Hall, 9915 39th Ave., Pleasant Prairie, WI 53158
- A brief presentation will take place from 5:15 to 5:30 p.m.

PROJECT DETAILS:

- Pulverizing and new full-depth asphalt pavement for southern segment from Highway 165 to 93rd Place
- Mill and overlay of existing asphalt pavement for northern segment from Bain Station Road to Prairie Ridge Boulevard
- Water main improvements throughout entire corridor

If you have any questions about the project during construction, you may contact Project Manager Doug Coeur by phone at (262) 653-1859, or by email at Douglas.Coeur@kenoshacounty.org

PROJECT INFORMATION

CONSTRUCTION NOTICE

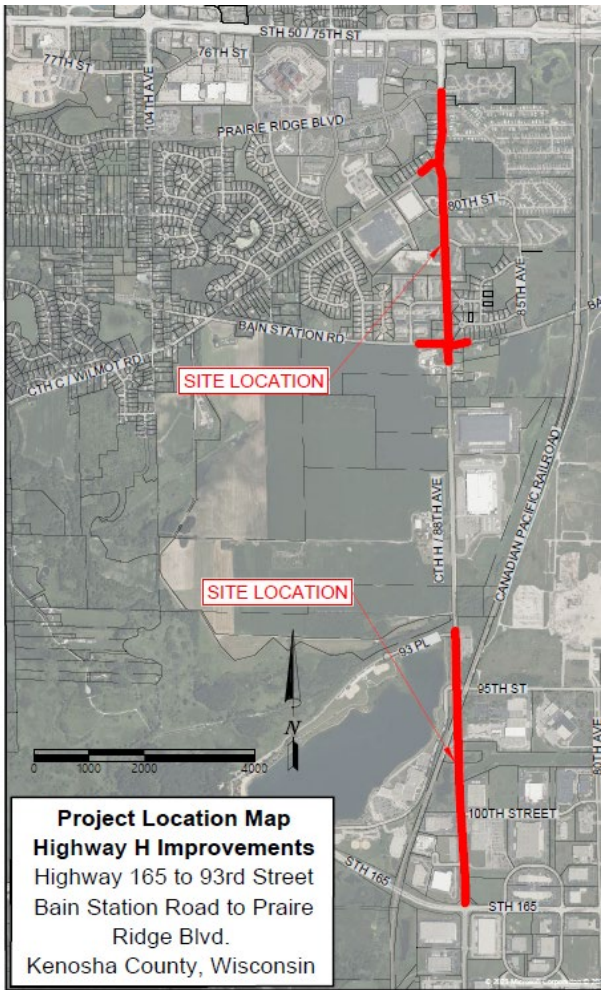
Highway H Improvements: Highway 165 to 93rd Place and Bain Station Road to Prairie Ridge Boulevard

Kenosha County will be resurfacing approximately 1.8 miles of Highway H in the Village of Pleasant Prairie in spring/summer of 2024.

Spot water main improvements will also be completed. In addition, water main will be relayed from Highway C to Prairie Ridge Boulevard. Short-duration water service interruptions are anticipated.

Highway H will be open to through traffic during the majority of the project, with flagging operations as needed. Short-term closures may be required for water main work.

Curb and gutter will be replaced in spot locations as needed.



Project Location Map
Highway H Improvements
Highway 165 to 93rd Street
Bain Station Road to Prairie Ridge Blvd.
Kenosha County, Wisconsin

The project team thanks you for your patience and cooperation throughout this project!

Find us on Facebook at: [Kenosha County Government](https://www.facebook.com/KenoshaCountyGovernment)

Find us online at: www.kenoshacounty.org/highways

County Project Contact:
Doug Coeur
Civil Engineer
Phone (262) 653-1859
Douglas.Coeur@kenoshacounty.org

