



# County Hwy WG Bridge Replacement Public Involvement Presentation

February 2024



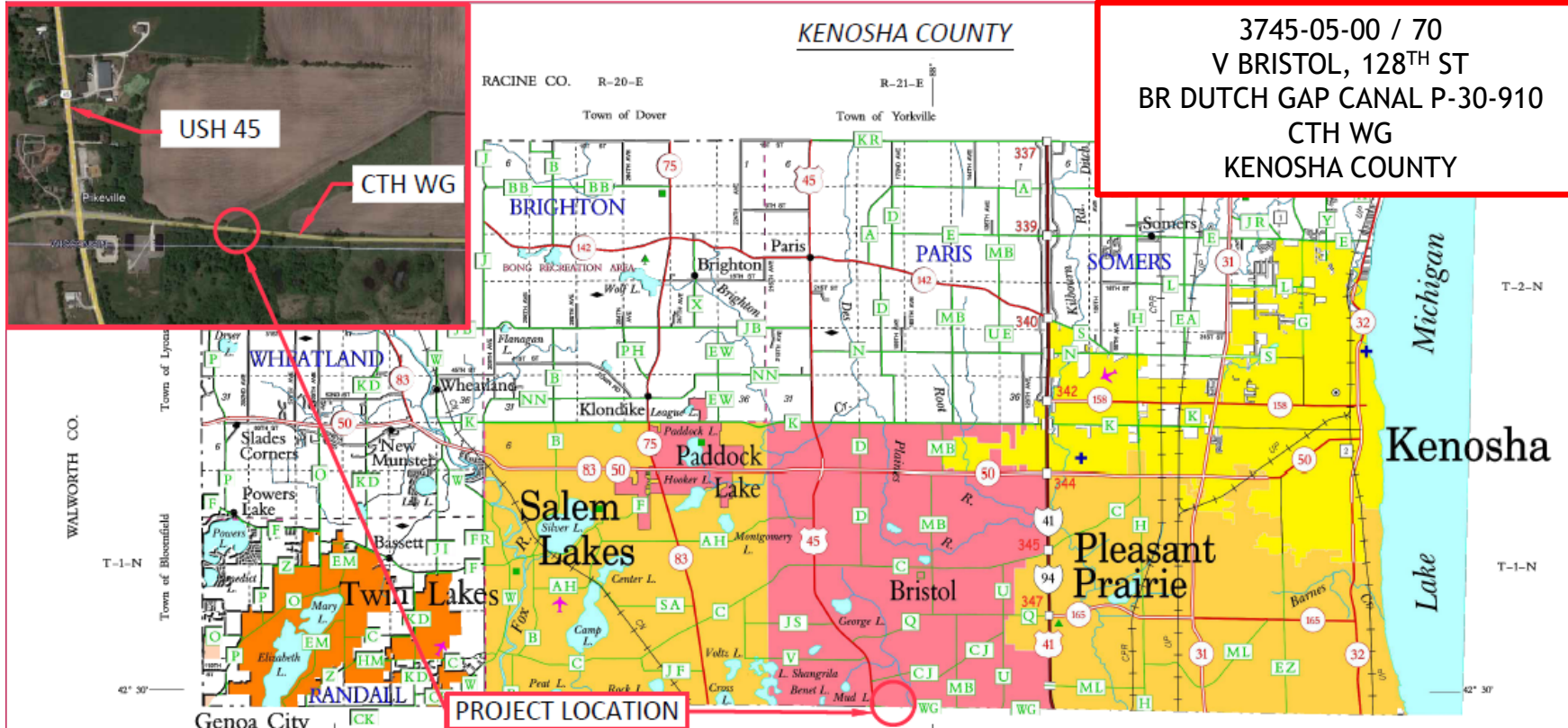


# Presentation Agenda

- ▶ Project Limits
- ▶ Project Need
- ▶ Proposed Design Overview
- ▶ Schedule
- ▶ Contact Information



# Project Limits





# Proposed Design Overview

## - Why Do We Need This Project?

- ▶ REPLACE THE EXISTING BRIDGE

- ▶ Single-span concrete flat slab bridge built in 1941
- ▶ Clear roadway width = 40-ft
- ▶ Sufficiency Rating = 42.4



- ▶ The bridge sufficiency rating is a numerical value computed from many factors to include the condition of the bridge. A bridge with a sufficiency rating of 100 is in perfect condition. Bridges with a rating less than 50 are eligible for replacement funding.



# Proposed Design Overview

## - Why Do We Need This Project?

- ▶ Deterioration of concrete deck, girders, railing and abutments
  - Delamination, Cracking, Spalling, Efflorescence, and exposed rebar in concrete
- ▶ Rehabilitation is not feasible
  - Poor Condition of Structural Components
  - Outdated Structure
- ▶ Safety of the Traveling Public
- ▶ Maintain access across the Dutch Gap Canal



# Proposed Design Overview

## - What Improvements are Proposed?

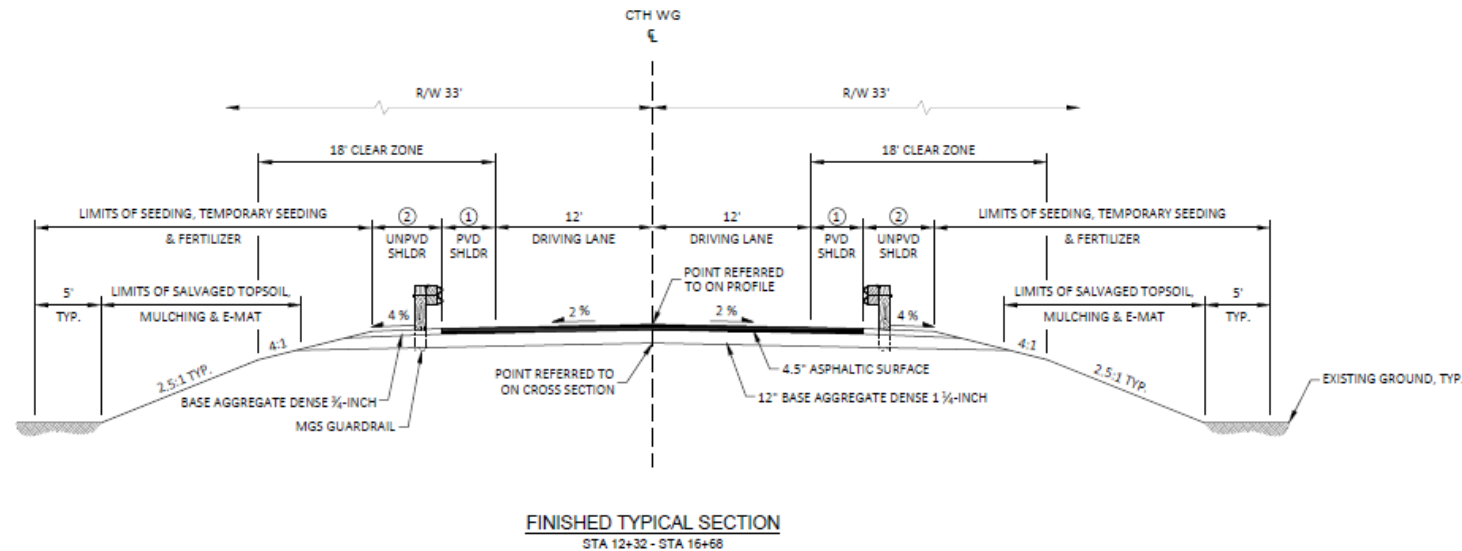
- ▶ Remove existing bridge.
- ▶ Construct a new 35 foot, single span, reinforced concrete flat slab bridge.
- ▶ Along with the structure, approximately 200' of the roadway approaches on both sides of the bridge will be reconstructed.
- ▶ Some Right-of-Way acquisition will be required for grading of the roadway ditches and slopes.



# Proposed Design Overview

- What Improvements are Proposed?

- ▶ Roadway Cross Section: Two 12-ft travel lanes with paved shoulders to front face of beam guard.
- ▶ Gravel shoulders vary from 3'11"-5'11" with beam guard grading taper.

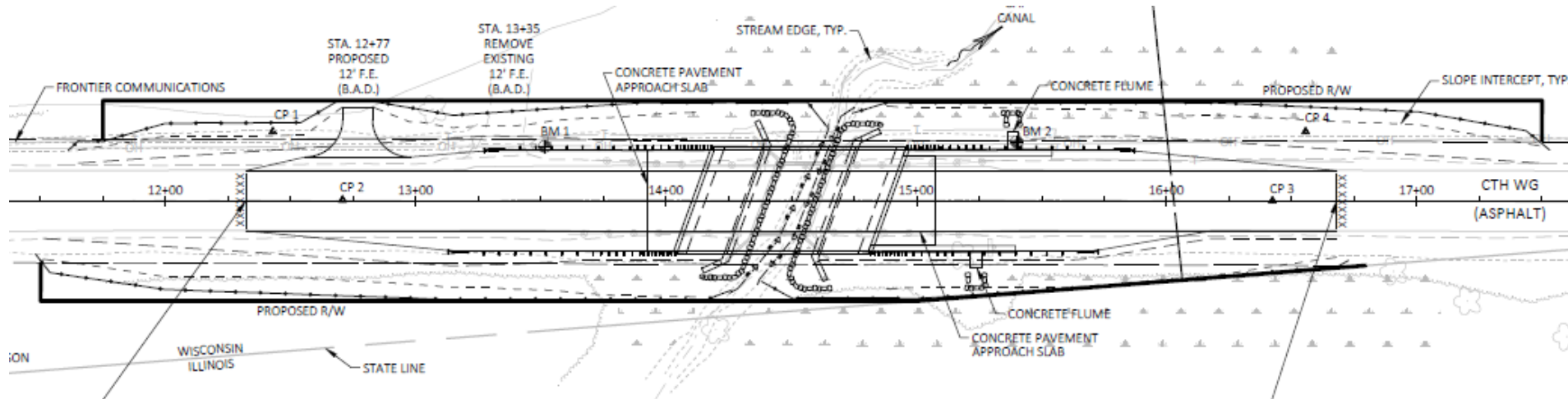




# Proposed Design Overview

## - What Improvements are Proposed?

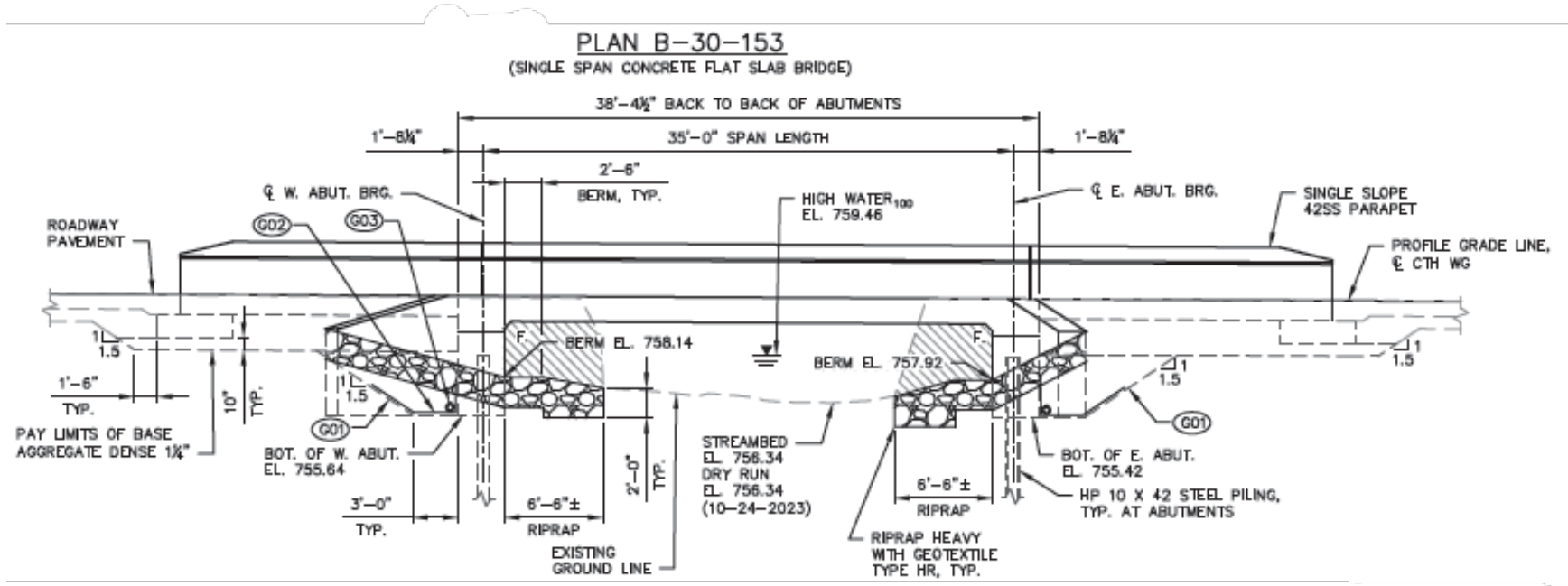
- R/W acquisition is anticipated as part of this project.





# Proposed Design Overview

## - What Improvements are Proposed?



# Proposed Design Overview

## - What Improvements are Proposed?

- ▶ The new bridge is anticipated to be a 35' single-span reinforced concrete flat slab structure.
- ▶ The new bridge will have a 40' clear roadway width between the bridge parapets.





# Proposed Design Overview

## - Construction

- ▶ CTH WG will be closed to traffic during construction.
  - ▶ A detour will be posted.
  - ▶ Construction will take approximately 3 months.



# Schedule

- ▶ Public Comment Period                      February 2024
  - ▶ Comments on the proposed design are encouraged. Please email, mail, or phone your comments to Aaron Palmer of Westbrook or Douglas Coeur of Kenosha County by **February 29, 2024**.
  
- ▶ Real Estate Acquisition                      May 2024 - July 2024
- ▶ Final Plan Submittal                          August 1, 2024
- ▶ Construction                                      Spring / Summer 2025





# Contact Information

## - Public Input and Comments



### Kenosha County

Douglas Coeur, Kenosha County Project Manager

Phone: (262) 653-1870

Email: [Douglas.Coeur@kenoshacounty.org](mailto:Douglas.Coeur@kenoshacounty.org)

19600 75<sup>th</sup> St, Suite 122-1, Bristol, WI, 53104

### Design Consultant - Westbrook Associated Engineers, Inc.

Aaron Palmer, PE

Phone: (608) 588-7866

Email: [apalmer@westbrookeng.com](mailto:apalmer@westbrookeng.com)

P.O. Box 429, Spring Green, WI 53588



**WESTBROOK**  
Associated Engineers, Inc.