



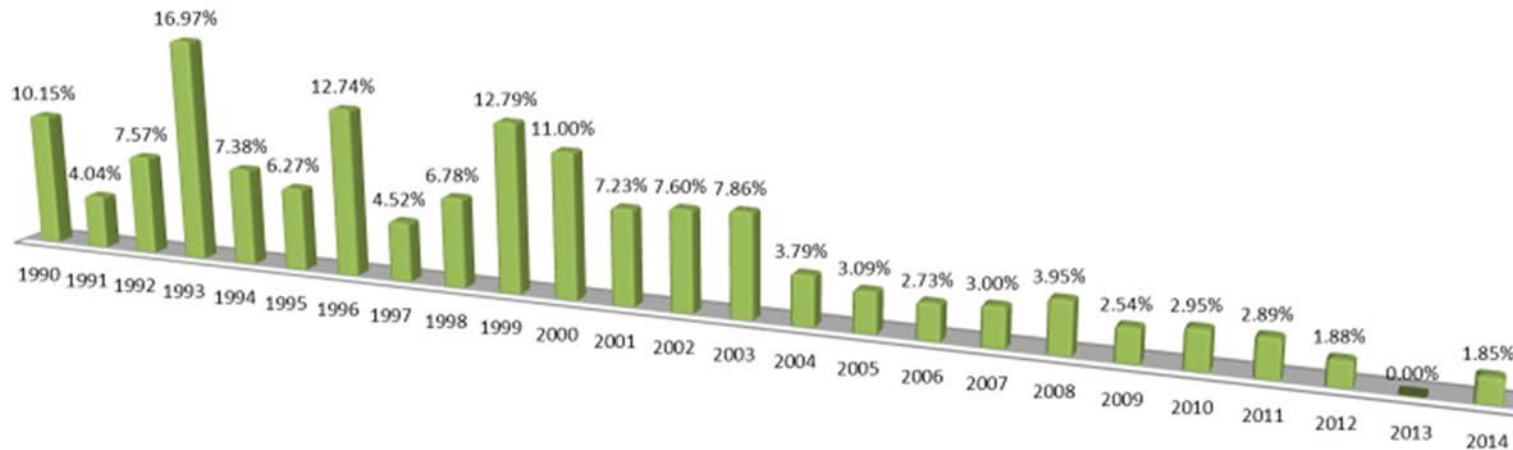
2014 Kenosha County Budget

Jim Kreuser
County Executive



Tax Levy – 25 year comparison

Kenosha County 25 Year Levy History



Kenoshans are neighborly and caring



Managed Print



Savings over \$35,000 a year



Kenosha County Administration Building



Kenosha County Courthouse



Silver Lake Trail



Silver Lake Trail



Pets Bridge Ribbon Cutting Ceremony



Petrifying Springs Bridge



Kenosha County Region





KENOSHA AREA BUSINESS ALLIANCE

We are the lead business organization that drives economic development throughout Kenosha County.

A screenshot of the Kenosha Area Business Alliance website. The top navigation bar includes links for KABA, RELOCATION/EXPANSION, UNEXPECTED kenosha, COMMUNITY, and CONTACT. The main content area features a large portrait of a man in a suit holding a sign that reads "KENOSHA IS opportunity". Below the sign, text describes Kenosha County's growth and lists companies like ACCO Brands, Gordon Food Service, and Uline. A small video player shows a person working, with the caption "RELOCATION in Kenosha". The footer contains logos for Kenosha advocates, including Sinopec, JOCKEY, Kenosha, and ULINE.



Meijer

◀ Continue Shopping

meijer


[Company](#) | [Careers](#) | [Newsroom](#) | [Community](#) | [Real Estate](#) | [Business to Business](#) | [Vendors](#) | [Team Members](#)

[Meijer.com Home](#) | [Meijer Corporate](#) | [Our Company](#)

Customers don't need us, we need them. - Fred Meijer
These words are the foundation for our company - a philosophy we've stood by since 1934

In the Beginning...
Where did it all start? Greenville, MI, 1934. It's the Great Depression, food is scarce, and Hendrik Meijer meets the needs of a small town with a small grocery store and fair

Shop Online...
You needed to be able to shop online, so we've extended our reach beyond this region with a robust e-commerce solution for the whole country. Now people across the



Based in Grand Rapids, MI, Meijer has announced that it will acquire SuperValu's Midwest Distribution Facility in Pleasant Prairie. The site contains an approximately 550,000 SF facility on approximately 120 acres. Meijer plans to build a 250,000 SF addition to the facility that will house a high bay automated storage and retrieval system. Once fully operational this facility is expected to have 486 full time employees. Meijer has more than 200 stores, which include general merchandise and grocery items.



EMCO Chemical Distributors

Announced they will relocate their HQs and add 145 jobs. EMCO purchased the former Lawter/Eastman Chemical/Hexion Specialty Chemical facility in 2010 and have anticipated that at the appropriate time this would become their corporate HQs for various reasons.

EMCO CHEMICAL DISTRIBUTORS INC.
NORTH CHICAGO, IL

WELCOME

EMCO Chemical Distributors, Inc. is the standard of excellence in the chemical distribution, manufacturing and packaging industries.

We Are Committed To:

- Building beneficial partnerships with customers, employees and suppliers.
- Conducting business with honesty and respect.
- Understanding and conforming to our customers' requirements by providing zero-defect products and on-time deliveries.
- Giving added value to our customers and suppliers with creative and cost-efficient ideas.
- Fostering an environment for our employees that encourages and rewards productivity, creativity and teamwork.
- Providing a safe work environment and safety training programs for our employees.
- Being a caring and helpful corporate citizen, dedicated to a clean environment and a prosperous community.

Edward Polen
President

PRODUCT LISTING

Outlook Web Access

TeamViewer for your Remote Support!

product listing | industrial chemicals | specialty chemicals | fine ingredients | custom packaging | waste services | facilities | company history | contact us | sample request | sitemap
© 2009 emco chemical distributors, inc. all rights reserved.





Chicago-based manufacturer of all natural foods including hummus, salsa, dips and guacamole, has purchased a 56,000 SF industrial facility in LakeView Corporate Park. Good Foods will relocate its corporate headquarters there and establish productions operations. The project will bring 50 jobs to Pleasant Prairie initially, with the possibility of up to 150 within two years. The company plans to complete renovations and begin operating in the first quarter of 2013.



Ta Chen International



Taiwanese steel distributor will construct a 471,000 square-foot building at Centerpoint. This project is \$35 MM + investment and about 63 jobs.



L&M Corrugated Containers

L & M CORRUGATED CONTAINER CORPORATION

L&M Since 1979

L&M Home

- Home
- About Us
- L&M East Location
- L&M West Location
- Product List
- Service List
- Ordering Information
- Order Online
- Quote Request
- Contact Us
- GlueChek
- Sustainability Initiatives
- eMotion Login

Order Online Now!

ISO 9001:2008

"Serving Illinois, Wisconsin, Iowa, Indiana, Michigan, and Minnesota."

© 2012 L&M Corrugated Container Corp. Page created by Future Services

L&M will be adding about 44 new jobs.



KONECRANES®

Global Home About Career Resources Investors Contact Us

Industries Equipment Service

Lifting Businesses™

Over 12,000 experts committed to one goal - lifting your business.

[Learn More About Konecranes](#)

Lifting Facts

KONECRANES has 12,100 employees in 626 locations worldwide and is active in almost 50 countries.

Video - Konecranes Introduction

Latest in media

12.08.2013 Konecranes starts statutory negotiations in Finland [Read more](#)


6 hours 39 min ago @Konecranes View our #Steel warehousing solutions for reliable and efficient operation: <http://t.co/71pD3zoRPq>

Follow us: [Twitter](#) [YouTube](#) [LinkedIn](#) [Google+](#) [RSS](#) [Facebook](#)

KONECRANES will be adding about 43 new jobs.




Hanna cylinders



1.866.950.6257
sales@hannacylinders.com

[Home](#) [Markets »](#) [Capabilities](#) [Distributors »](#) [Cylinder Repair](#) [Info »](#) [Contact](#) [News](#)

Hanna's 3-Day Delivery Program
Hanna's Red Express Program
Hanna's Lead Time Schedule



Providing Exceptional Quality Since 1901

Hanna Cylinders will be adding about 105 new jobs.



50/KENALL®

YEARS OF LIGHTING INNOVATION



Kenall Manufacturing - 621
Jobs





KENOSHA AREA BUSINESS ALLIANCE

We are the lead business organization that drives economic development throughout Kenosha County.

More than **1,500 new jobs**
announced since the start of 2013

UNEXPECTED kenosha

KABA RELOCATION/EXPANSION COMMUNITY CONTACT

KENOSHA IS opportunity

Kenosha County is one of the fastest growing areas in the state of Wisconsin. And with over five million square feet of industrial development since 2006, the potential for continued growth is great. A few of the companies that have recently made major investments in Kenosha County include ACCO Brands, Gordon Food Service, Mondi Akrosil and Uline. A bit unexpected? Sure. But that's also what makes Kenosha so compelling.

RELOCATION in Kenosha

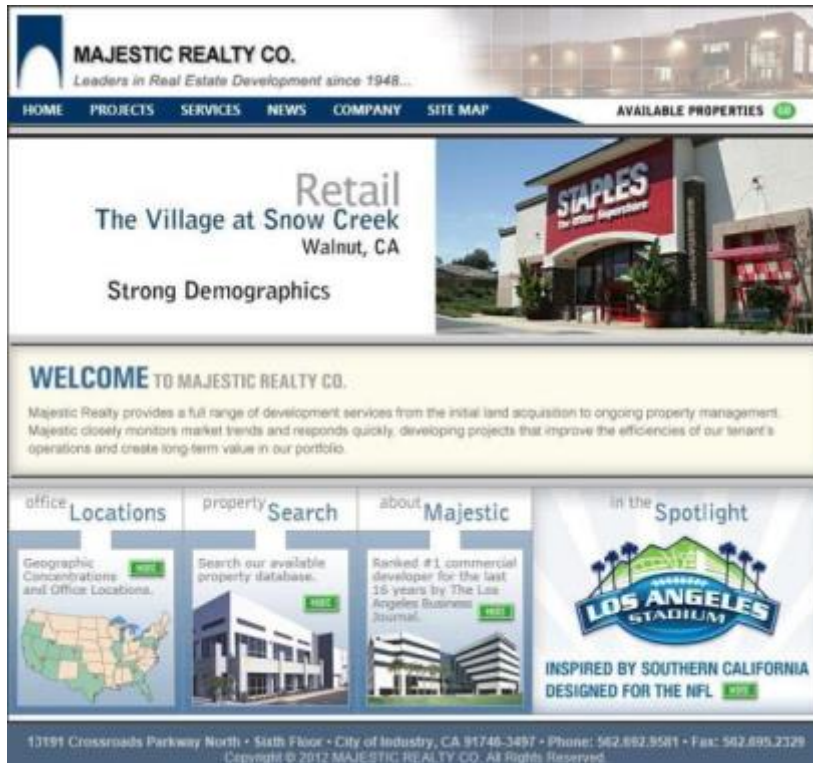
kenosha advocates

Uline

The advertisement features a man in a suit holding a large sign with the text "KENOSHA IS opportunity". The sign also contains a video player showing a person working and the text "RELOCATION in Kenosha". The background of the advertisement is a dark, textured surface.



Majestic Realty Company



Large privately-owned real estate development company based in California, has acquired an 88-acre industrial site in Pleasant Prairie, immediately adjacent to LakeView Corporate Park. Majestic is planning to build up to 1.2 million SF of industrial/distribution center space at the site.





[ABOUT US](#) [ACQUISITIONS](#) [DEVELOPMENT](#) [ADVISORY SERVICES](#) [CONTACT](#)



AVAILABLE



2801 S Western Avenue
Chicago, IL

[more...](#)

NEWS

September 12, 2013 - Venture One Purchases 312,154 Square Foot Building in Chicago

June 21, 2013 - Venture One Purchases Two Industrial Facilities Totaling 158,189 Square Feet

April 26, 2013 - Venture One Purchases 643,617 SF Facility in Romeoville



Kenosha County Growth

BizTimes.com
Milwaukee business news

NewsE-newslettersMagazineRegionalBlogsMu

Home > Magazine > Current Issue > September 30, 2013

September 30, 2013 9:00AM

Kenosha County is a red hot development spot

Real Estate

By Andrew Weiland

 Like 3

 Tweet 4

 Share 1

 Print

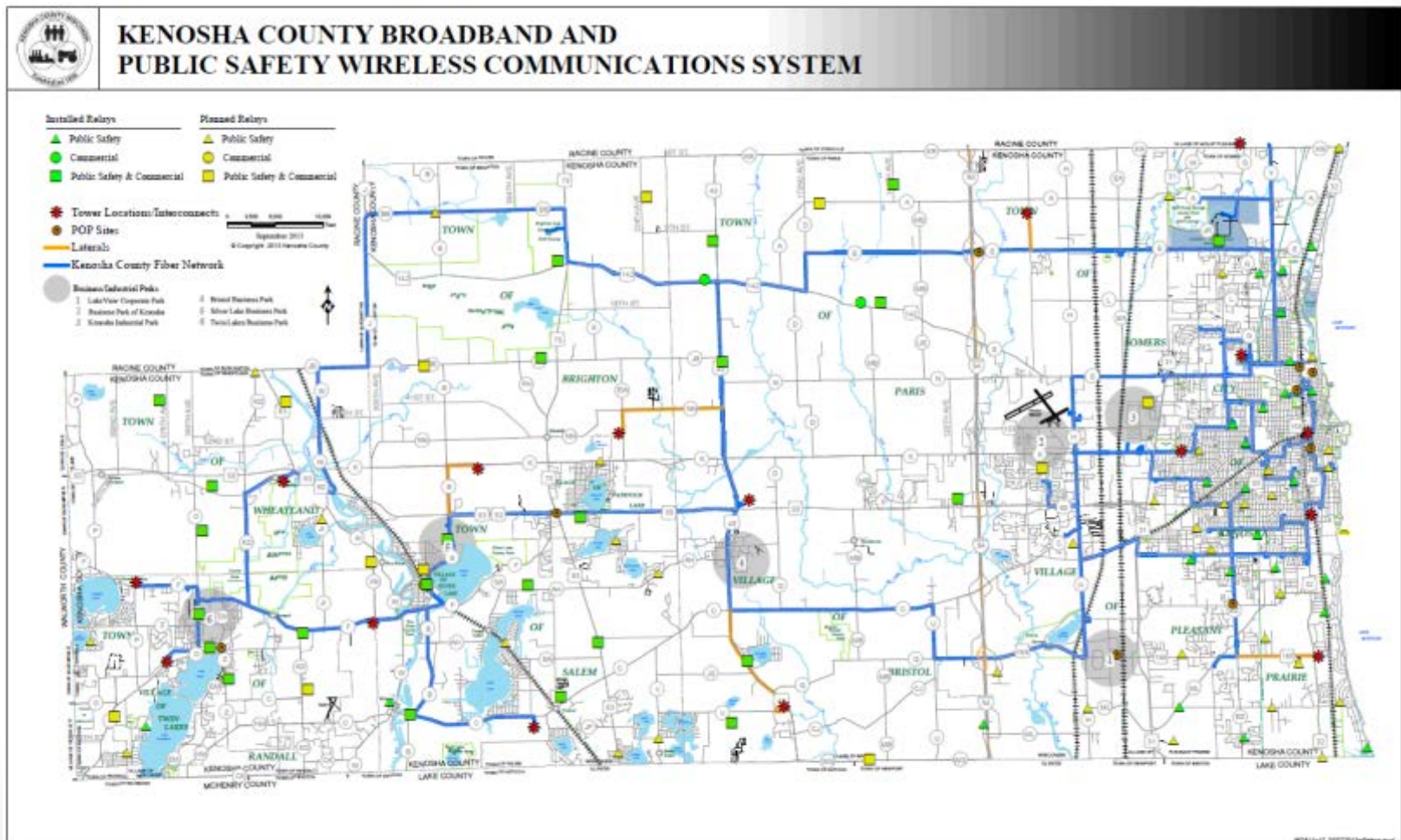
Kenosha County's population ranks only fourth among the southeastern Wisconsin counties, but because of its proximity to the Chicago area, it is one of the most active development areas in the region and has become one of the most important areas in the state for economic development.

Kenosha County has attracted businesses from the Chicago area for years, but activity seems to have increased recently as several firms have announced plans this year to move from Illinois to Kenosha County.

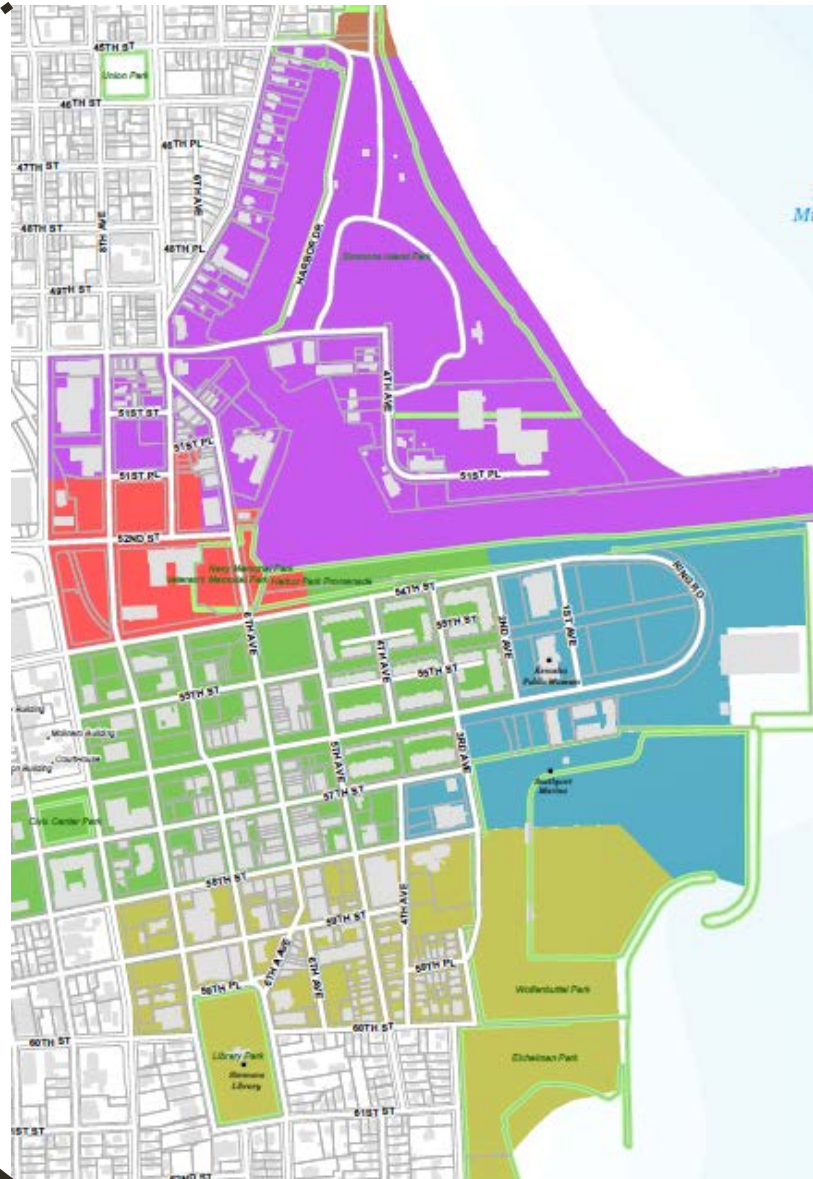
<http://www.biztimes.com/article/20130930/MAGAZINE03/309279985/0/SEARCH>



Public Safety and Commercial Broadband Networks



This map of San Francisco displays various colored zones and a dashed line. The zones include a red area in the center-left, a large purple area in the center, a green area in the lower-left, a blue area in the lower-right, and a yellow area in the bottom-right. A dashed line runs diagonally from the top-right towards the bottom-right, passing through the purple and blue zones. The map also shows a grid of streets and a body of water on the right side.

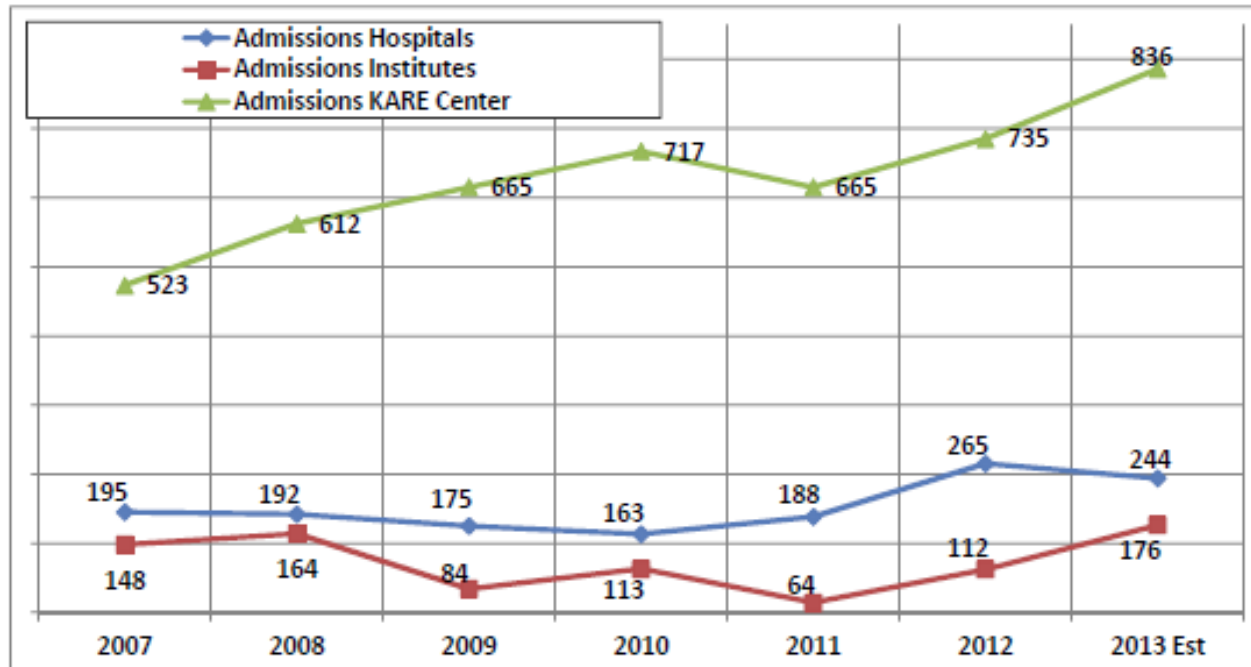


Mental Illness Awareness

**MENTAL ILLNESS
AWARENESS WEEK**

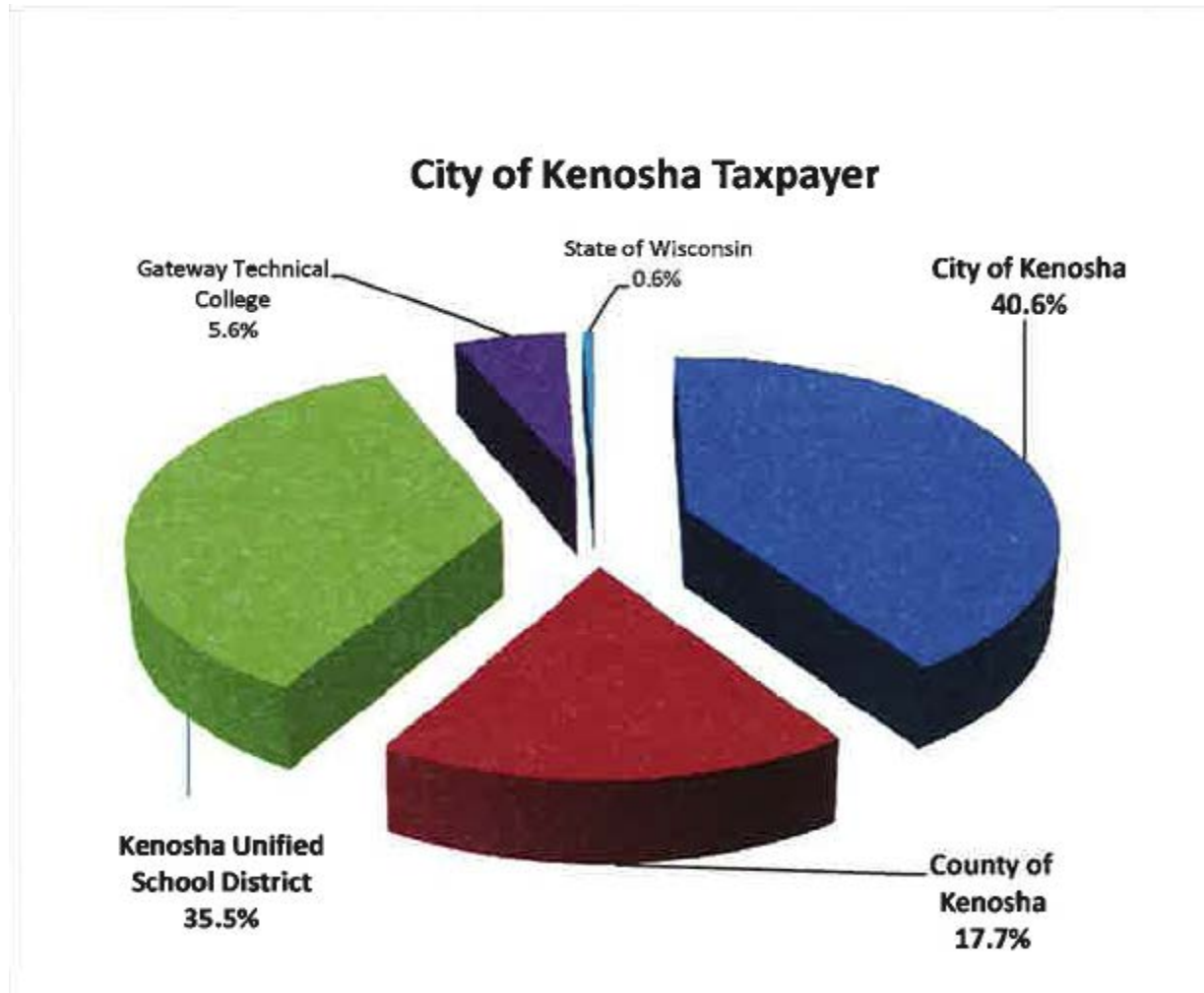
October 6-12, 2013

www.nami.org/MIAW



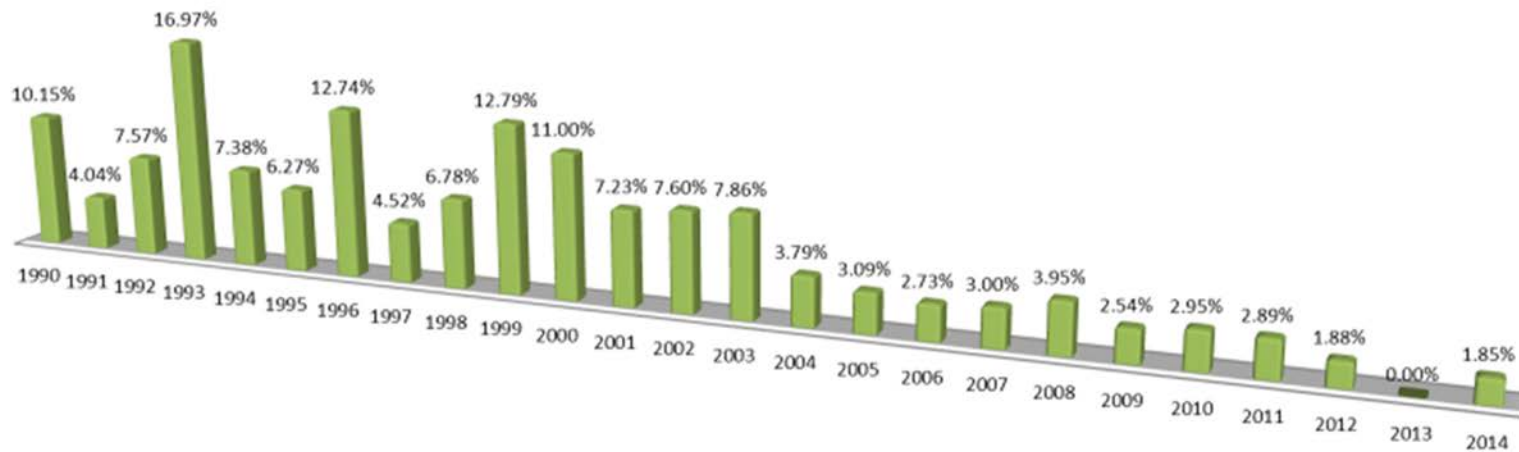
Average Home Analysis

City of Kenosha Taxpayer



Tax Levy – 25 year comparison

Kenosha County 25 Year Levy History



Second lowest tax levy in 25 years



Kenosha County KD Park



God Bless Kenosha County

